

R-15 OR R-13+1 WALL INSULATION

1/2" DIA. ANCHOR BOLT OR EQUAL @ 6'-0" O.C. MAX. (EMBEDDED INTO FOUNDATION 7")

REFER TO TABLE R401.2 (a) OR (b) FOR THK. 3,000 PSI CONC. SLAB W/ #3 DIA. BARS @ 16" O.C.E.W. (TYP.) OR EQUIVALENT REINFORCING WIRE

#4 DIA. X 4'-0" LONG TIE BAR @ 32" O.C. 2" MIN. RADIUS BEND

REBAR LOCATION @ TOP 1/2 OR UPPER 1/3 OF SLAB

5" COMPACTED SAND FILL (TYP.)

WATERSTOP, CONT.

PLASTIC CHAIRS (CLIP TO STL. REINF.) OR EQUIVALENT (NON-CORROSIVE, SAND CHAIR)

3,000 PSI CONC. GRADE BEAM W/ STL. REINFORCING CONT. @ TOP & BTM. AS PER TABLE W/ #3 DIA. VERT. TIES @ 36" O.C.

R403.1.6

R506.2.4

24

R703.1.1

R703.8.4.1

R703.8.5

R703.8.6

R401.3

10"

REFER TO TABLE FOR GRADE BEAM DEPTH R401.2 (a) or (b)

3" CLR.

3" CLR.

3" CLR.

SEE TABLE R401.2 (a) OR (b)

WOOD SHEATHING W/ APPROVED WEATHER-RESISTANT BARRIER, LAP OVER BASE COURSE FLASHING 6" MIN. OR AS APPROVED BY MFG.

METAL TIES: NO. 22 GA. X 7/8" CORRUGATED HOT DIPPED GALV.

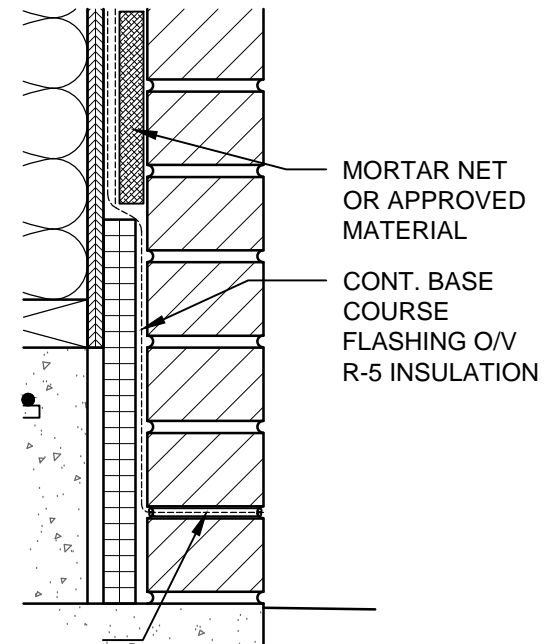
MORTAR NET OR APPROVED MATERIAL

CONT. BASE COURSE FLASHING O/V INSULATION

R-5 INSULATION, 12" HEIGHT CONT. @ PERIMETER (CLOSED CELL)

3/16" WEEPS @ 33" O.C. MAX. AND SHALL BE LOCATED IMMEDIATELY ABOVE THE FLASHING

FINISH GRADE (8" MIN. DISTANCE FROM EARTH TO SILL PLATE) (SLOPE GRADE @ 1/2" PER FT FOR 5'-0" MIN. AWAY FROM FOUNDATION)



MORTAR NET OR APPROVED MATERIAL

CONT. BASE COURSE FLASHING O/V R-5 INSULATION

STANDARD FOUNDATION, TWO POUR

SCALE: 1" = 1'-0"

3/16" WEEPS @ 33" O.C. MAX. SHALL BE LOCATED IMMEDIATELY ABOVE THE FLASHING