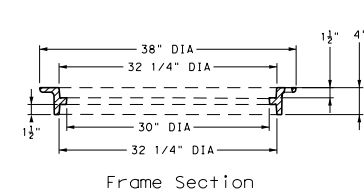
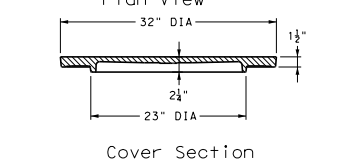
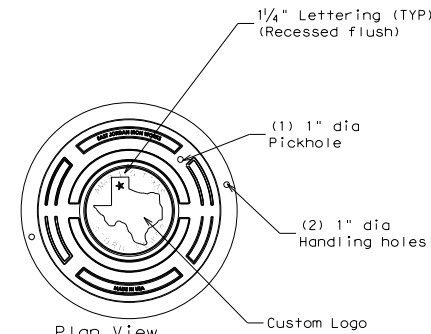
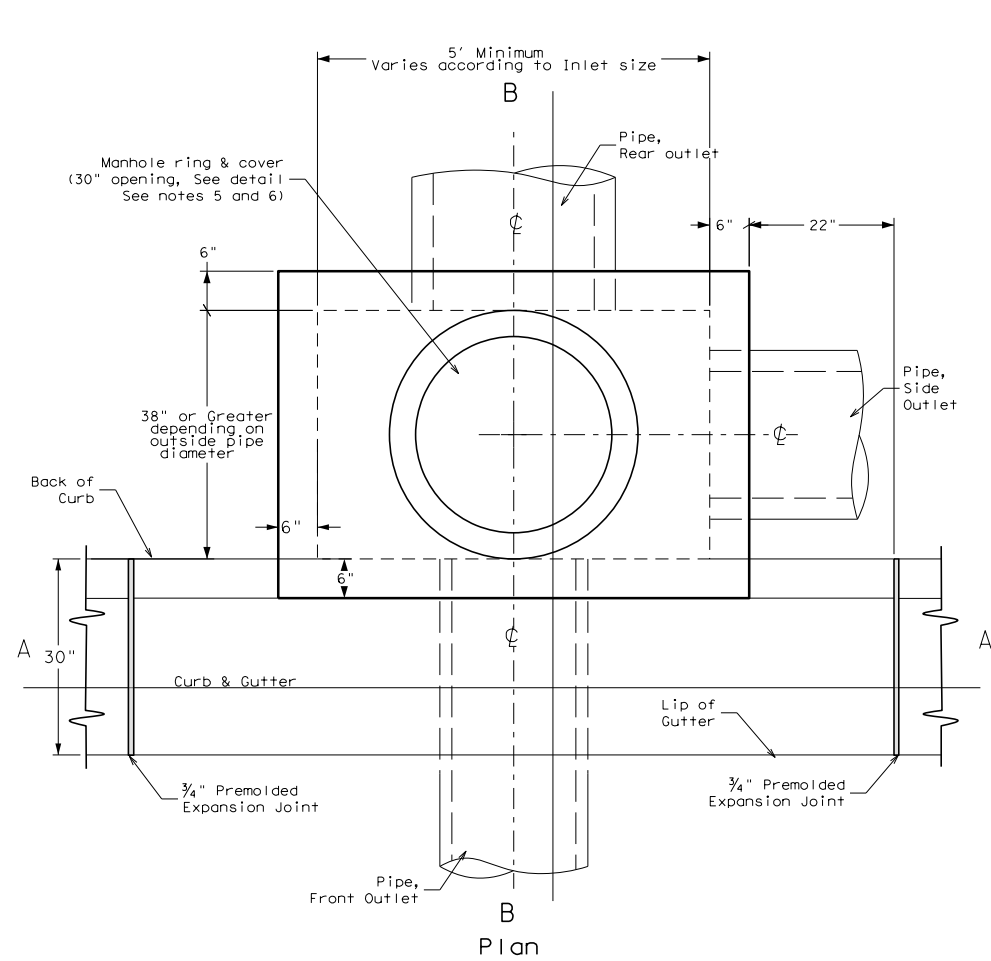
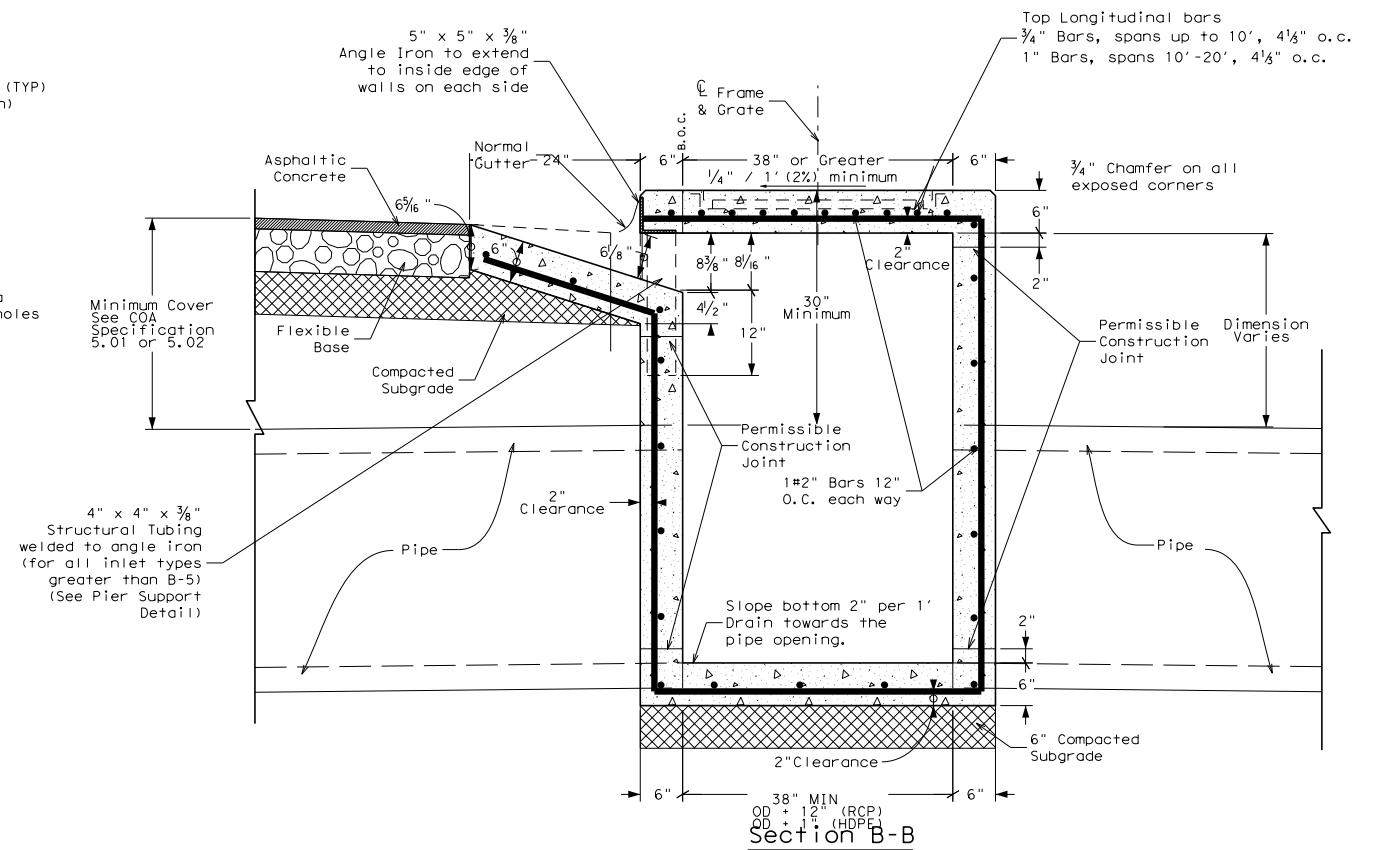


DISCLAIMER : The use of this standard is governed by the "Texas Engineering Practice Act". No warranty of any kind is made by the City of Amarillo for any purpose whatsoever. The City of Amarillo assumes no responsibility for the conversion of this standard to other formats or for incorrect results or damages resulting from its use.



## Frame and Cover Detail

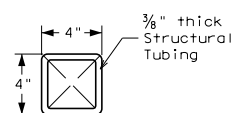


TYPE	"A"	"A" Dimension w/Optional Wings (2 each)	
B-5	5'-0"	5'-0"	N/A
B-10	10'-0"	10'-0"	N/A
B-15	15'-0"	5'-0"	*W-5
B-20	20'-0"	10'-0"	*W-5
B-25	25'-0"	5'-0"	*W-10
B-30	30'-0"	10'-0"	*W-10

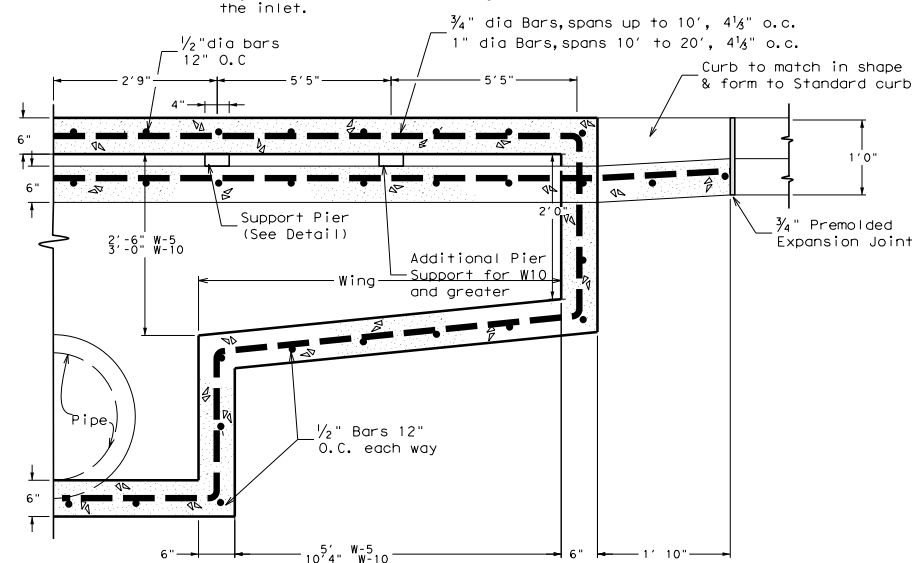
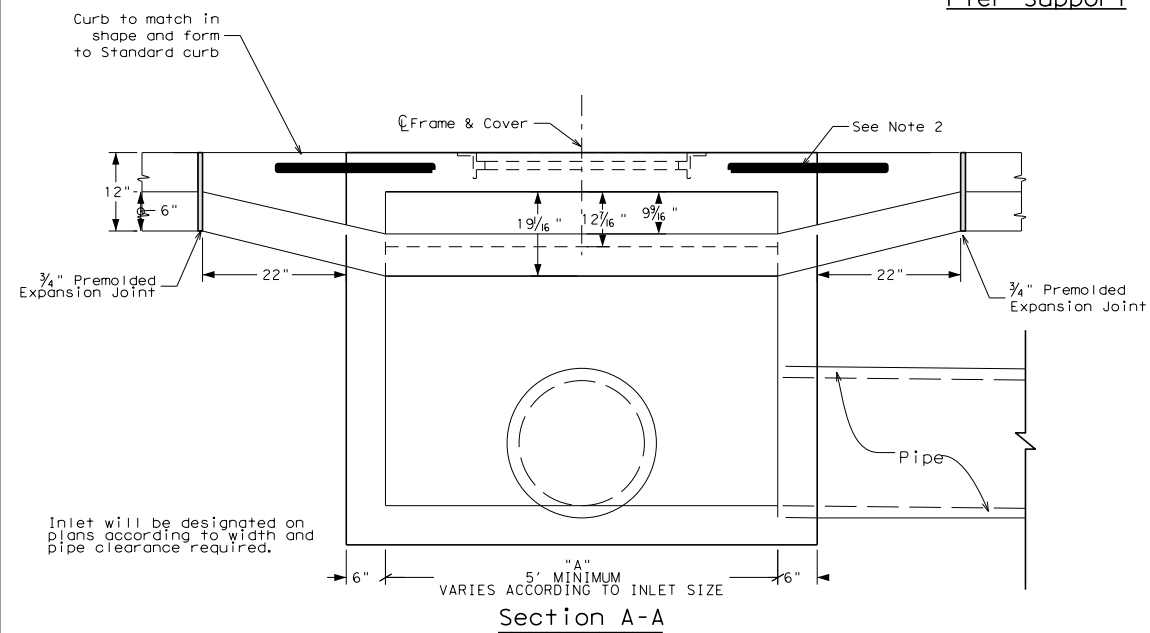
\*See Optional Wing Detail

NOTE:

- NOTE:
1. Pier supports shall be used on all inlets 8-10 and greater. Pier supports shall be spaced 5'-5" On Center.
  2. When Wing Extensions are used, the angle iron is continuous along the face of the inlet.



### Pier Support



### Optional Wing Detail

GENERAL NOTES:

1. Storm sewer inlet shall conform to City of Amarillo Standard Specifications Subsections 4.09, 5.01 and 5.02, (Latest Revision).
2. Curb & gutter and inlet shall be tied together with two (2) one half (1/2") inch diameter deformed reinforcing bars two (2') feet long. One bar shall be centered in the top six (6") inches of the curb & gutter and the other shall be centered in the outer six (6") inches of the lip.
3. All laps of reinforcing bars shall be forty (40) times the diameter of the reinforcing bar and shall be securely tied. All reinforcing bars shall be deformed and Grade 60 unless otherwise noted.
4. Precast inlets are acceptable subject to engineer review and approval. If precast inlets are submitted they shall have the same throat detail as that shown herein, be designed for HS-20 wheel loading, and have an angle iron on the curb face. Submittals shall be detailed and documented to indicate compliance with loadings and physical properties.
5. East Jordan Iron Works (EJIW) cover V-1430C and frame 1480Z are specified. Other frame/cover combinations are acceptable subject to engineer review and approval, providing specifications are met.
6. Securable manhole ring and cover are not required unless specified for project. When securable manhole ring and cover are required, they shall be equipped with a securable lid with a minimum two (2) stainless steel bolts countersunk into lid and threaded into ring.



# City of Amarillo Storm Sewer Curb Inlet Details

DRAWN BY: RLH

DESIGNED BY: MKS, RLH

HORIZ. SCALE VERT. SCALE	NTS	DATE 11/16/2010
JOB NO. COA*INLETS*10		SHEET 1 OF 1