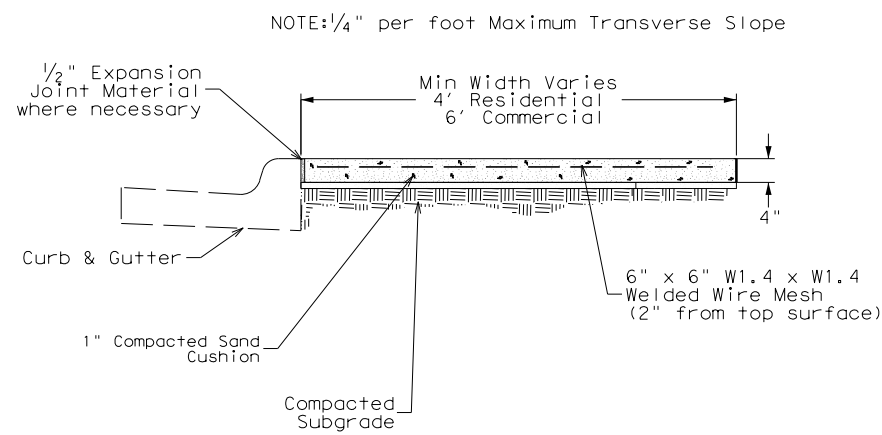
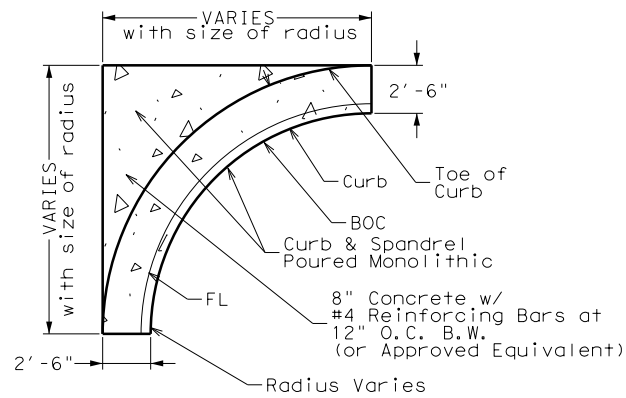


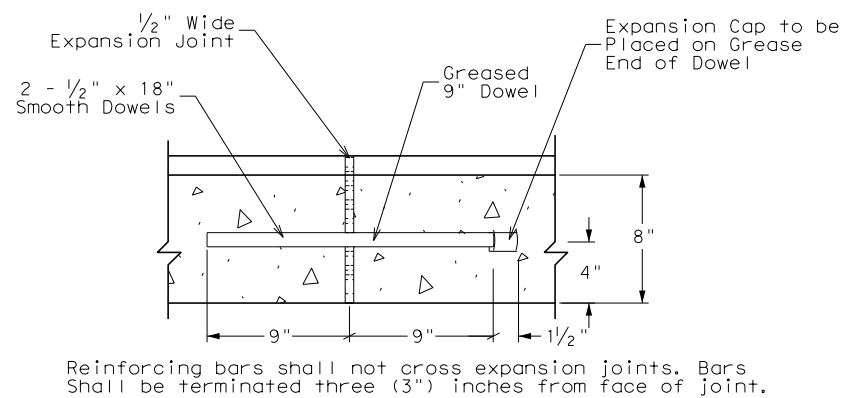
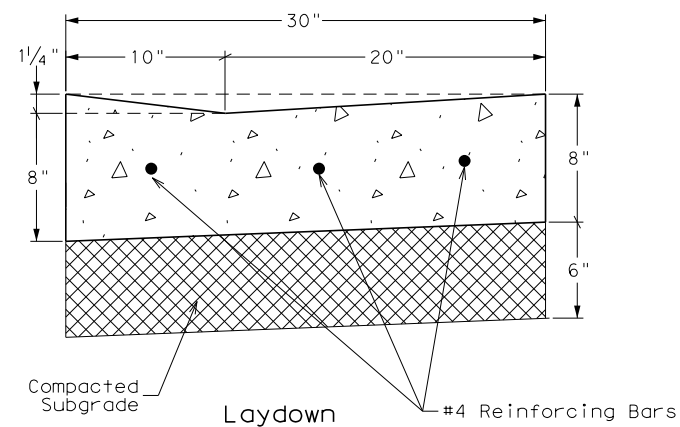
DISCLAIMER: The use of this standard is governed by the "Texas Engineering Practice Act". No warranty of any kind is made by the City of Amarillo for any purpose whatsoever. The City of Amarillo assumes no responsibility for the conversion to other formats or for incorrect results or damages resulting from its use.



TYPICAL SIDEWALK DETAIL

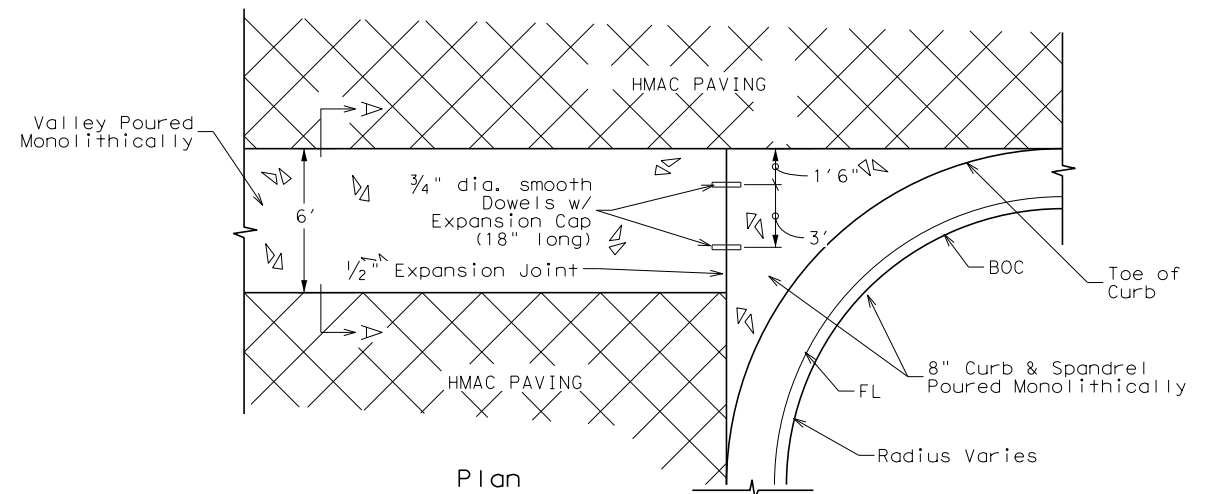


8" SPANDREL, CURB AND GUTTER

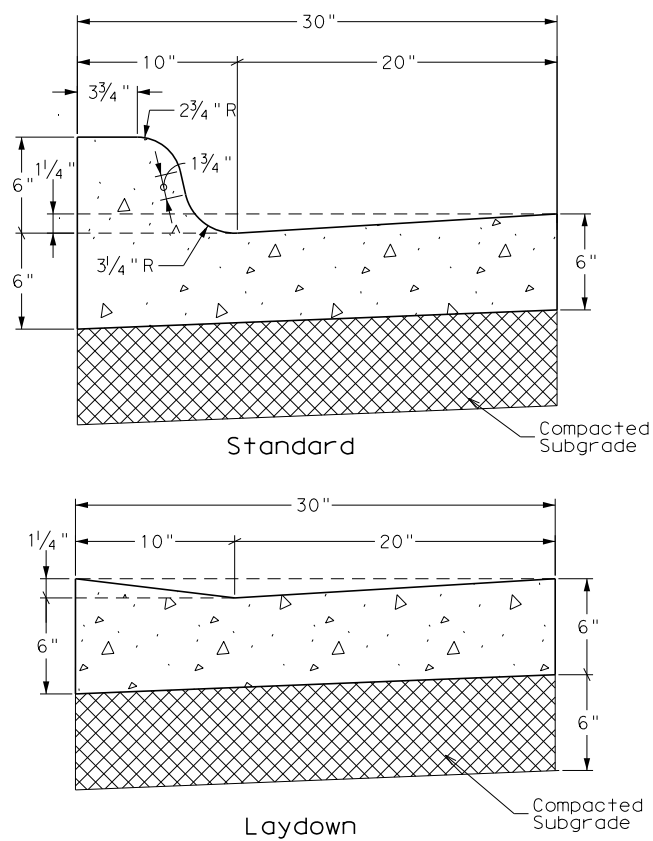


Longitudinal Section Through Curb & Gutter
Typical Expansion Joint Details

8" HEAVY CURB & GUTTER



Section A-A
TYPICAL 8" CONCRETE VALLEY



6" CURB & GUTTER



City of Amarillo Standard Paving Details

DRAWN BY: r1h	
DESIGNED BY: r1h	
HORZ. SCALE nts	DATE
VERT. SCALE nts	08/24/10
JOB NO. COA*PAV*DET*10	SHEET 1 of 2

