



Meet. Play. Celebrate.

Physical Address

Amarillo Civic Center Complex

401 S. Buchanan

Amarillo, Texas 79101

Venue Contacts

Bo Fowlkes: General Manager

Bo.fowlkes@amarillo.gov Office Phone: 806-378-9460

Christopher Post: Asst. General Manager

Christopher.Post@amarillo.gov , Office : 806-678-9480

Derek Hisek – Production Manager

Derek.Hisek@amarillo.gov , Office: 806-678-3088, Cell: 605-695-6179

Jackie Gandy – Event Manager (FOH things)

Jackie.Gandy@amarillo.gov , Office: 806-378-9471, Event Cell (will be answered by Event Supervisor on duty) EC: 806-654-1719

Han Owens – Box Office Manager

Han.owens@amarillo.gov , Office :806-378-6174

Maya Weatherholt - 1st Asst. Production Manager

Maya.Weatherholt@amarillo.gov , Office: 806-378-9346 Cell: 806-677-4193

Cameron Cockrell – 2nd Asst. Production Manager

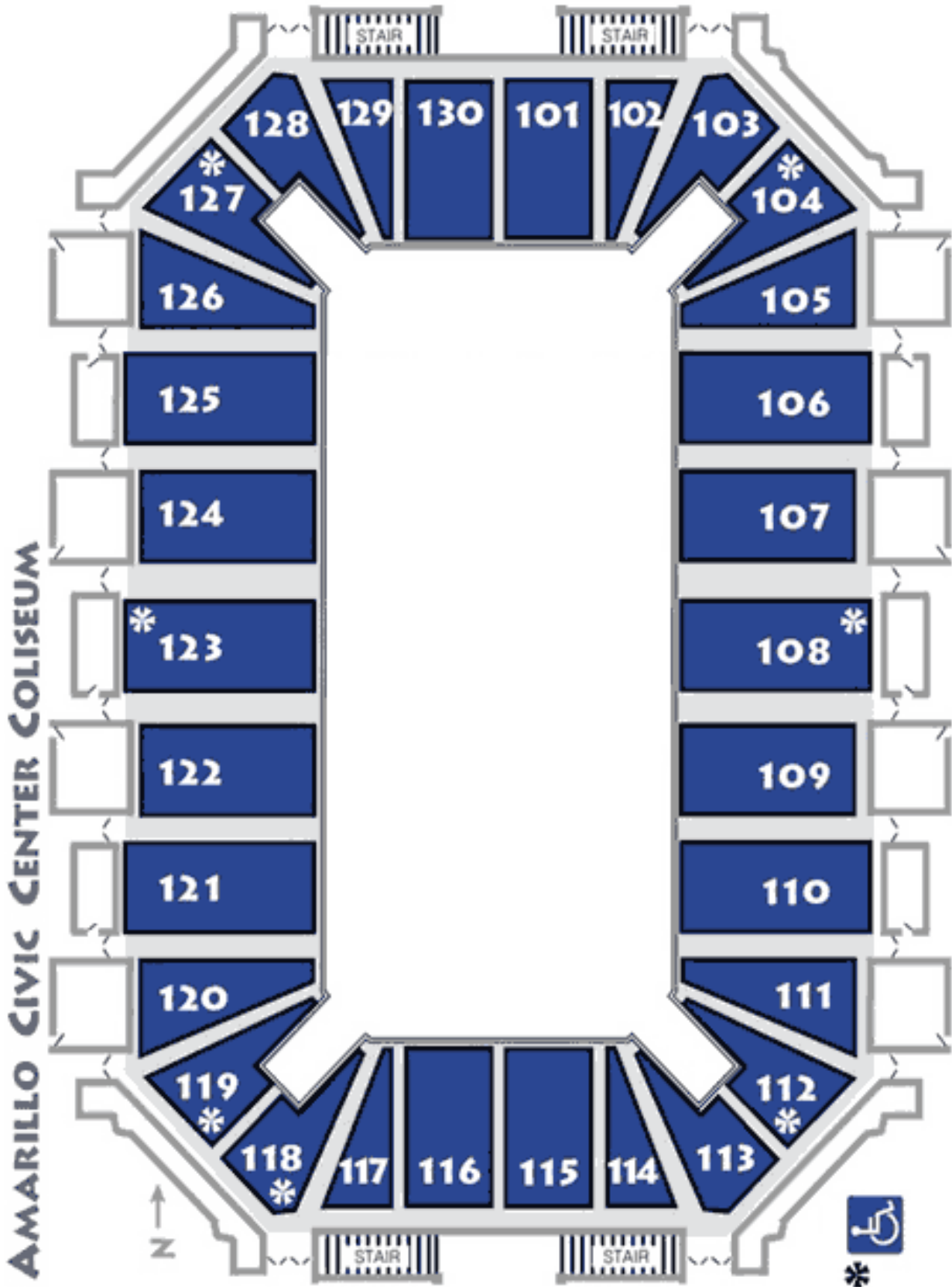
Cameron.Cockrell@amarillo.gov , Office: 806-378-4221, Cell:806-670-7923

Ashley Jones – Marketing Administrator

Ashley.jones@amarillo.gov , Office:806-378-4246

COMPLEX MAP







The Amarillo Civic Center Complex Coliseum was **constructed in 1968** as the largest venue inside the Amarillo Civic Center Complex. The bowl seats 4,826 with an additional 50 accessible seats available, and another 1800 possible capacity on the floor. The Coliseum can host a wide variety of events including floor conversions from standard concrete, dirt, ice rink, arena turf, and basketball floor. The Coliseum is surrounded by a full-service concourse with (6) six concession stands and (4) main entrances. Spacious concourses on all sides offer an ample amount of vendor space for trade shows, concerts, sporting events, and much more. Room height from floor to ceiling is 50' 10" with 38'10" of open space from the floor to the lower steel. Underground ramp access to the Coliseum is available on the east side of the facility.

The Amarillo Civic Center Complex Coliseum resides in the heart of downtown Amarillo.

PLEASE READ ALL DETAILS WITHIN THIS DOCUMENTS TO HAVE A COMPLETE UNDERSTANDING OF THIS VENUE.

Amarillo Civic Center Coliseum Technical Specifications

Revised 8.14.24

General Information

FLOOR DIMENSIONS: 90' x 190'

LOW STEEL HEIGHT: 38' 10" From floor

HIGH STEEL HEIGHT: 50' 10" From floor

BETWEEN STEEL (North to South): 47'

HOUSE SPEAKERS: All speakers are above the low steel.

Z-BAR: Runs North to South between steel @ 50' from floor.

RIGGING: Please be aware that the Coliseum venue was constructed in 1968 and unfortunately does not have many of the modern amenities found in most arenas. There are a limited number of dead hang points and most all points require bridle rigging. This can be time consuming and affect load-in times. Please be sure to speak with a member of our Production management team regarding how your hang will need to be adjusted to fit this venue. Steel and ceiling details are listed on page 2 and page 8 of the technical pack. Please review this information carefully.

CATERING AREA: Upstage Right just off NW hallway, labeled as the HEADLINER ROOM

PRODUCTION OFFICE: Upstage Right just off NW hallway, next to the HEADLINER ROOM

DRESSING ROOMS: Upstage Right along NW hallway.

ACCESS TO FLOOR: Through vomitory on Northwest corner of Coliseum, down a 200' hallway. Vomitory entrance to the Coliseum floor listed in the hallway diagram in the tech packet.

INTERCOM SYSTEM: throughout Coliseum. Clear Com 2-channel headset system

POWER AVAILABLE:

4 -400 AMP Three Phase -25' from upstage right (NW corner of Coliseum)

1 -200 AMP Three Phase -25' from upstage right (NW corner of Coliseum)

All Above – 4.0 Cam Lock hook-ups.

1-100 AMP Three Phase –25' from upstage right (Must be run under roll-up door)

Bare Tail Tie – In.

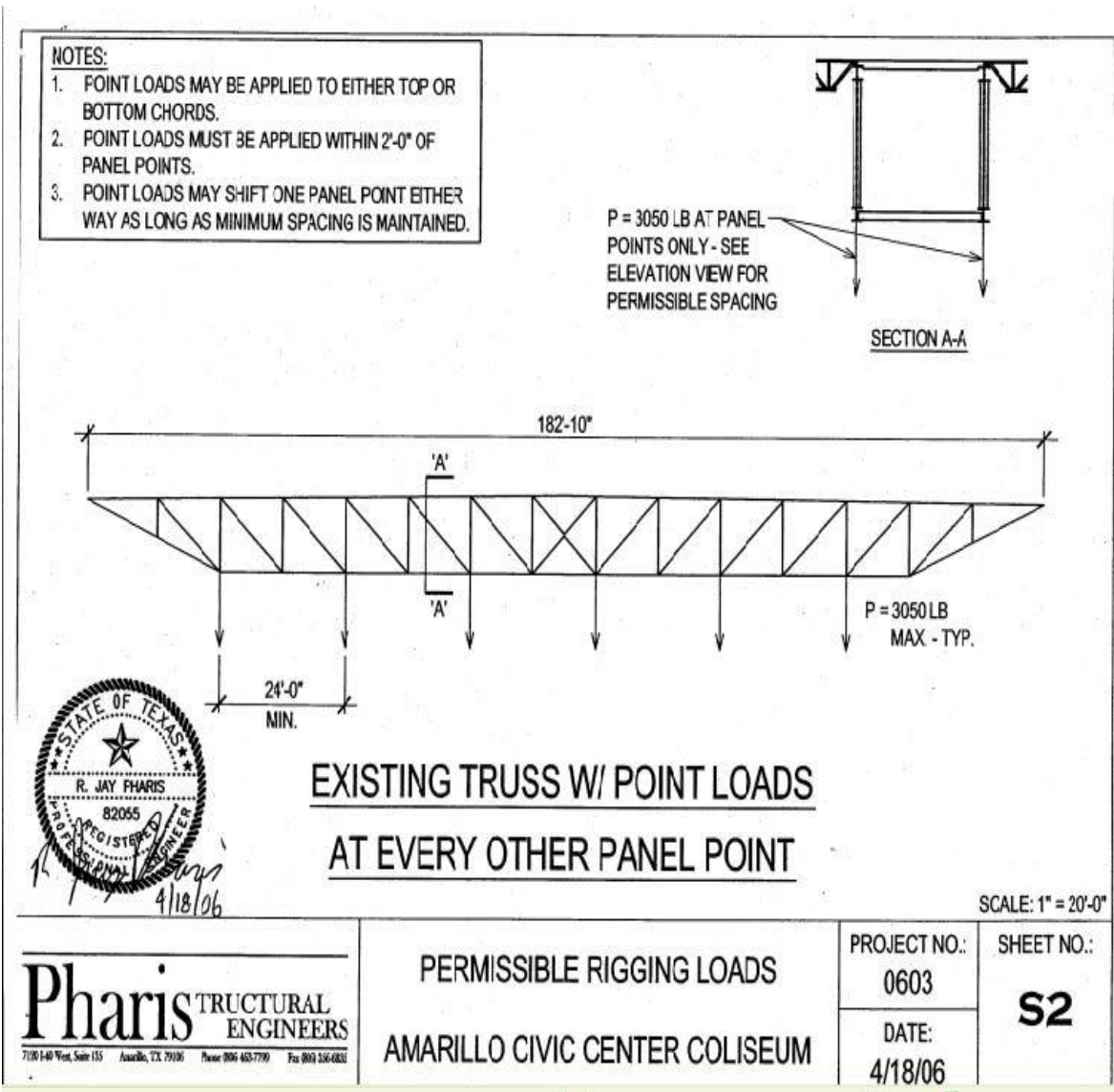
1 -600 AMP THREE PHASE -200' from downstage right (SW corner of Coliseum)

Bare Tail Tie – In.

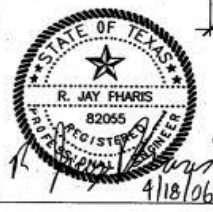
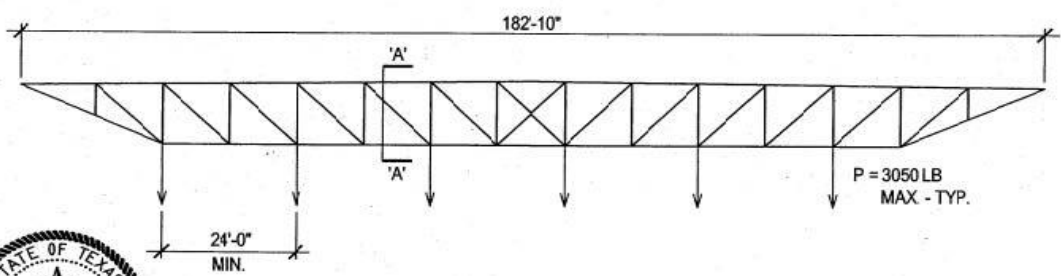
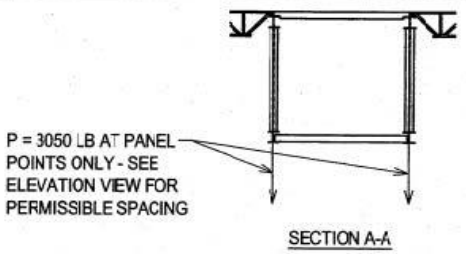
Structural Steel Load Limits

- 3063 lbs. per bridle, main steel to main steel 1500 lbs. per point dead hung from main steel
- 800 lbs. maximum load per Z-Bar
- 20 lbs. per square foot roof live load
- 12 lbs. per square foot roof safe load

Structural drawings showing all permissible rigging loads are shown below. An updated structural survey was conducted by Pharis Structural Engineers on 9/21/2022 and certified no deficiencies in the Coliseum rigging structure and verified all loads are accurate.



- NOTES:**
1. POINT LOADS MAY BE APPLIED TO EITHER TOP OR BOTTOM CHORDS.
 2. POINT LOADS MUST BE APPLIED WITHIN 2'-0" OF PANEL POINTS.
 3. POINT LOADS MAY SHIFT ONE PANEL POINT EITHER WAY AS LONG AS MINIMUM SPACING IS MAINTAINED.

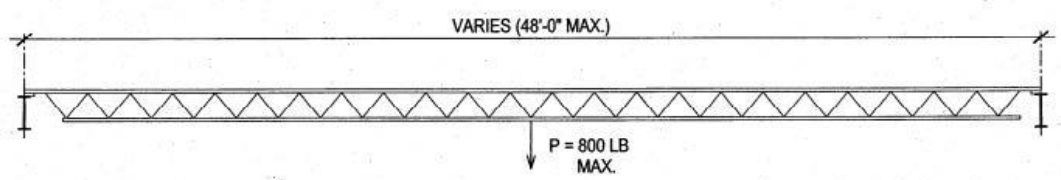


**EXISTING TRUSS W/ POINT LOADS
AT EVERY OTHER PANEL POINT**

SCALE: 1" = 20'-0"

Pharis TRUCTURAL ENGINEERS <small>7120 I-40 West, Suite 135 Amarillo, TX 79106 Phone 806 463-7799 Fax 806 336-6833</small>	PERMISSIBLE RIGGING LOADS	PROJECT NO.: 0603	SHEET NO.:
	AMARILLO CIVIC CENTER COLISEUM	DATE: 4/18/06	S2

- NOTES:**
1. POINT LOADS MUST BE APPLIED AT BOTTOM CHORD PANEL POINTS.
 2. POINT LOAD SHOWN CAN BE APPLIED AT ANY PANEL POINT ALONG THE LENGTH OF THE JOIST.
 3. MULTIPLE POINT LOADS MAY BE APPLIED TO THE JOIST AS LONG AS THE TOTAL LOAD DOES NOT EXCEED THE MAX. SINGLE POINT LOAD SHOWN BELOW.



EXISTING STEEL JOIST

SCALE: 3/16" = 1'-0"

Pharis TRUCTURAL ENGINEERS <small>7120 I-40 West, Suite 135 Amarillo, TX 79106 Phone 806 463-7799 Fax 806 336-6833</small>	PERMISSIBLE RIGGING LOADS	PROJECT NO.: 0603	SHEET NO.:
	AMARILLO CIVIC CENTER COLISEUM	DATE: 4/18/06	S3

Lighting

HOUSE LIGHTS:

LED lighting for the entire coliseum

Lighting is not dimmable, but various sections can be switched on and off as needed.

Control is on the Upper Concourse, on the same level with follow spots.

FOLLOW SPOTS:

6 -Xenon Super Trooper 2000 watt

Coliseum Floor

CONCRETE LAGGING: **Absolutely NO lagging** is allowed on Coliseum floor due to underlying ice floor pipes.

LOADING: The load in/out point for the Coliseum area is located on east side of the Facility at entrance #5. The load in point is a 196-foot-long incline ramp that can accommodate up to two (2) tractor trailer trucks at a time. Items must be off loaded by forklift or ramp (event provided) and pushed 216 feet to the coliseum floor. Hallway and height dimensions can be seen in the Dressing Room diagram also listed in this tech pack.

ICE FLOOR COVERING: When necessary, the ice surface can be covered with Polar Floor to accommodate other events. Please check with the Production Manager if you have any questions.

STAGING: *Stageright* portable stage constructed in 4' x 8' sections. Deck finish is interchangeable between carpeted, and poly surfaced Customary stage height is 48" – 60". Dimension capability is 4'x8' up to 60'W x 48'D with the ability to add a 8' x 24' thrust.

SCOREBOARD & GRAPHIC DISPLAYS: The Coliseum is equipped with a scoreboard, graphic message display board, and dual penalty clocks, on both the north and south ends of the room. The boards are permanently fixed in position at the upper concourse level, just over the seating areas. Scoreboard and Display features are as follows.

Scoreboards

- 14 feet wide x 6 feet 10 inches tall.
- Double digit **Home** and **Guest** score counters.
- (4) period/quarter indicator lights.
- Interchangeable lower panels for specific Hockey, Football, or Basketball information.
- Scoreboard controller is a Daktronics All Sports series 5000 console controller.

Message Displays

- Message Board Dimensions are approximately 14 feet wide x 6 feet 10 inches tall.
- Boards are Daktronics LED 10mil Video Boards 512 pixels wide by 288 pixels down
- DMP 8000 Daktronics player / processor
- Displays can support 1080dpi

The Amarillo Civic Center Complex **does not** create the images for these displays. All display images are the responsibility of the client and are required to be submitted (5) days prior to an event.

Technical services are required to run any images on the display boards during an event. Standard rates will apply.

Sound

AUDIO SYSTEM: In-house audio system available upon request. Center Technician required.

Audio system consists of:

Console: Midas M32

Amplification: (9) QSC CX12 600W amplifiers

(1) 600W QSC amplifier (subs)

Speakers: (12) EV FRX-940 full range speakers evenly dispersed to cover grand stands

(12) EV PI Matrix Full range speakers evenly dispersed directly over floor for floor seating coverage

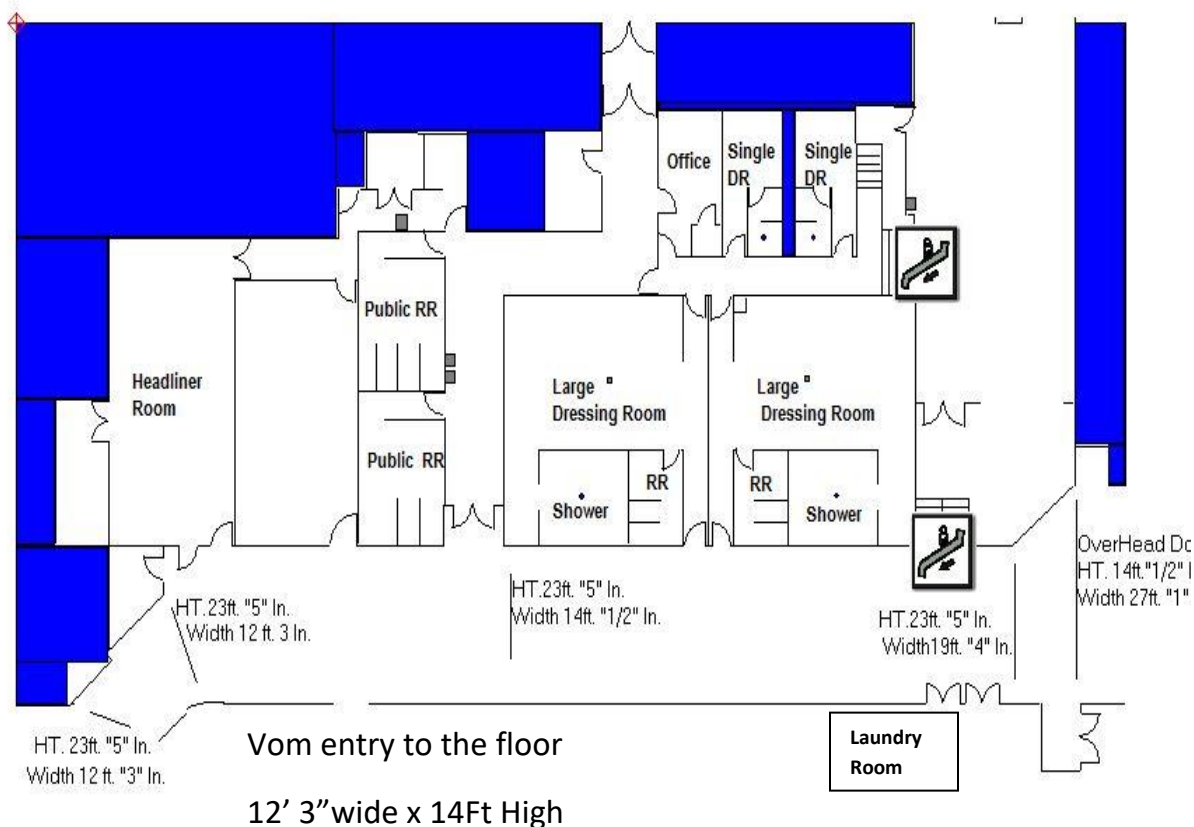
(4) Yamaha dual 18-inch subs

THIS SPACE
INTENTIONALLY
LEFT BLANK

Dressing Rooms

The Civic Center Coliseum has two (2) large dressing room areas and two (2) smaller single dressing rooms. All dressing rooms come equipped with toilets, lavatories, and shower facilities. All dressing rooms are equipped with one (1) television monitor for viewing the Coliseum show floor, or local basic cable.

The lower dressing room area also has a small production office, which can also be used as a quick-change room, and a larger Headliner Room available for various uses. Below you will see a diagram showing the area layout and the hallway that runs from the loading doors to the Coliseum Floor.



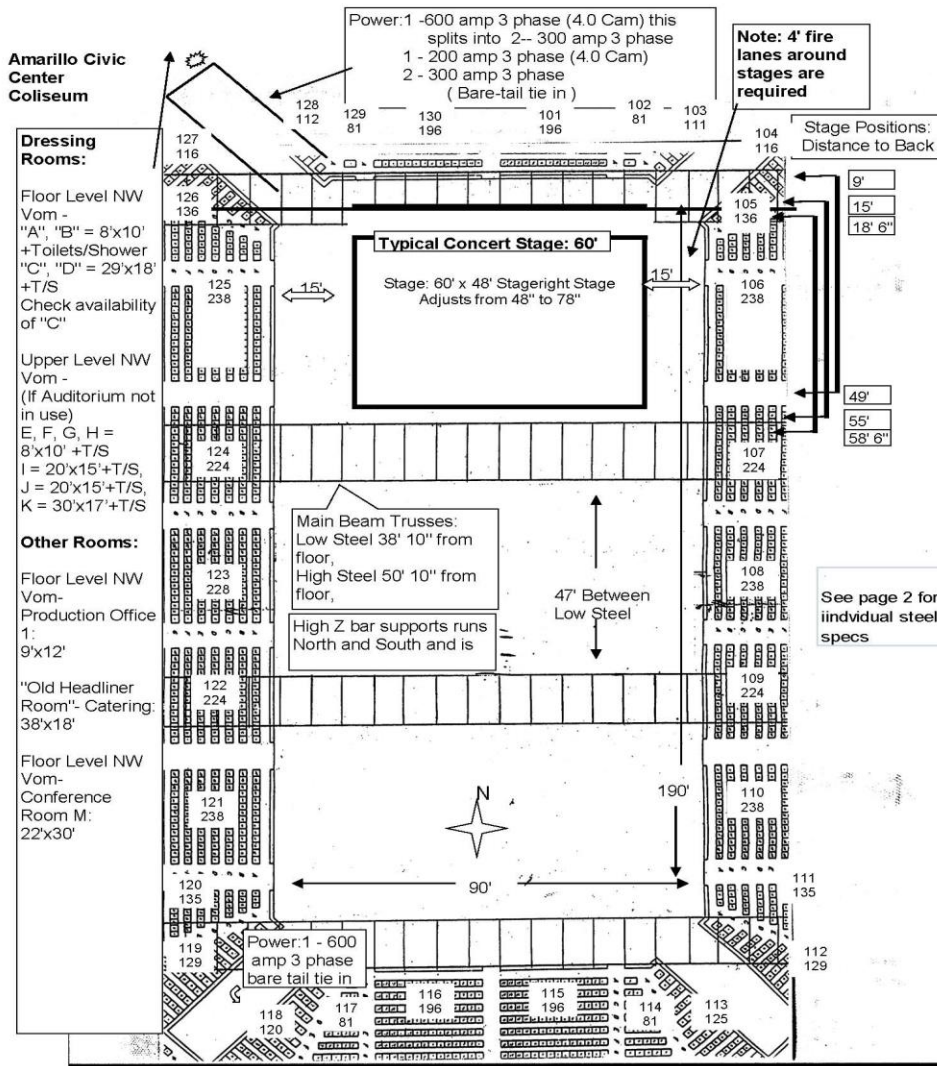
PRODUCTION DEPARTMENT CONTACT INFORMATION:

Derek Hisek
Production Manager
806-378-3088
Derek.Hisek@amarillo.gov

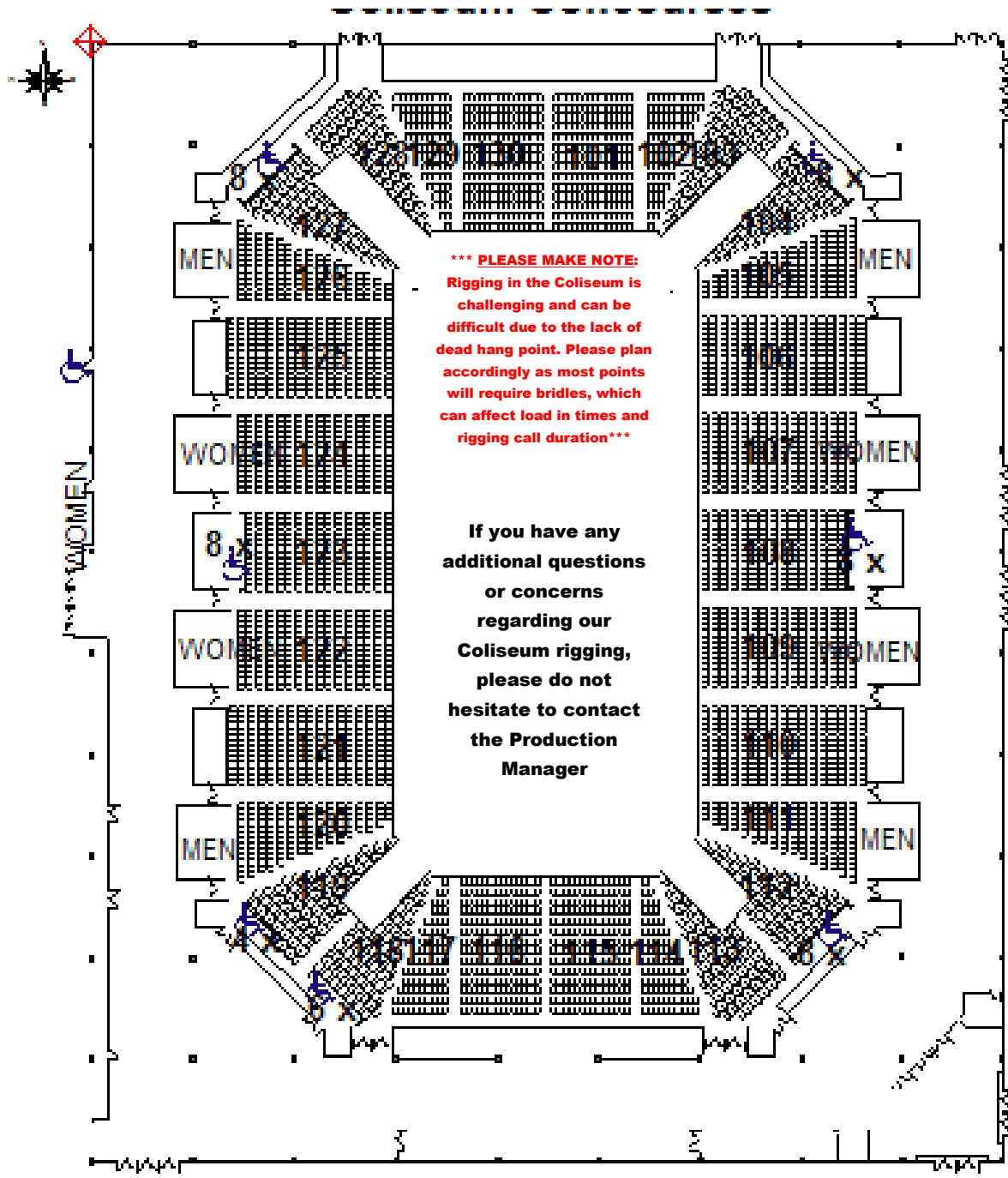
William Weatherholt
Asst. Production Manager
806-378-9346
willian.weatherholt@amarillo.gov

Cameron Cockrell
Asst. Production Manager
806-378-4211
Cameron.cockrell@amarillo.gov

***** PLEASE MAKE NOTE: Rigging in the Coliseum is challenging and can be difficult due to the lack of dead hang point. Please plan accordingly as most points will require bridles, which can affect load in times and rigging call duration*****



***** PLEASE MAKE NOTE: Rigging in the Coliseum is challenging and can be difficult due to the lack of dead hang point. Please plan accordingly as most points will require bridles, which can affect load in times and rigging call duration*****



4,820 permanent - 50 H/C Seating - 2,192 GA