



Meet. Play. Celebrate.

Physical Address

Amarillo Civic Center Complex
401 S. Buchanan
Amarillo, Texas 79101

Venue Contacts

Bo Fowlkes: General Manager

Bo.fowlkes@amarillo.gov Office Phone: 806-378-9460

Christopher Post: Asst. General Manager

Christopher.Post@amarillo.gov , Office : 806-678-9480

Derek Hisek – Production Manager

Derek.Hisek@amarillo.gov , Office: 806-678-3088, Cell: 605-695-6179

Jackie Gandy – Event Manager (FOH things)

Jackie.Gandy@amarillo.gov , Office: 806-378-9471, Event Cell (will be answered by Event Supervisor on duty) EC: 806-654-1719

Han Owens – Box Office Manager

Han.owens@amarillo.gov , Office :806-378-6174

Will Weatherholt - 1st Asst. Production Manager

william.Weatherholt@amarillo.gov , Office: 806-378-9346 Cell: 806-677-4193

Cameron Cockrell – 2nd Asst. Production Manager

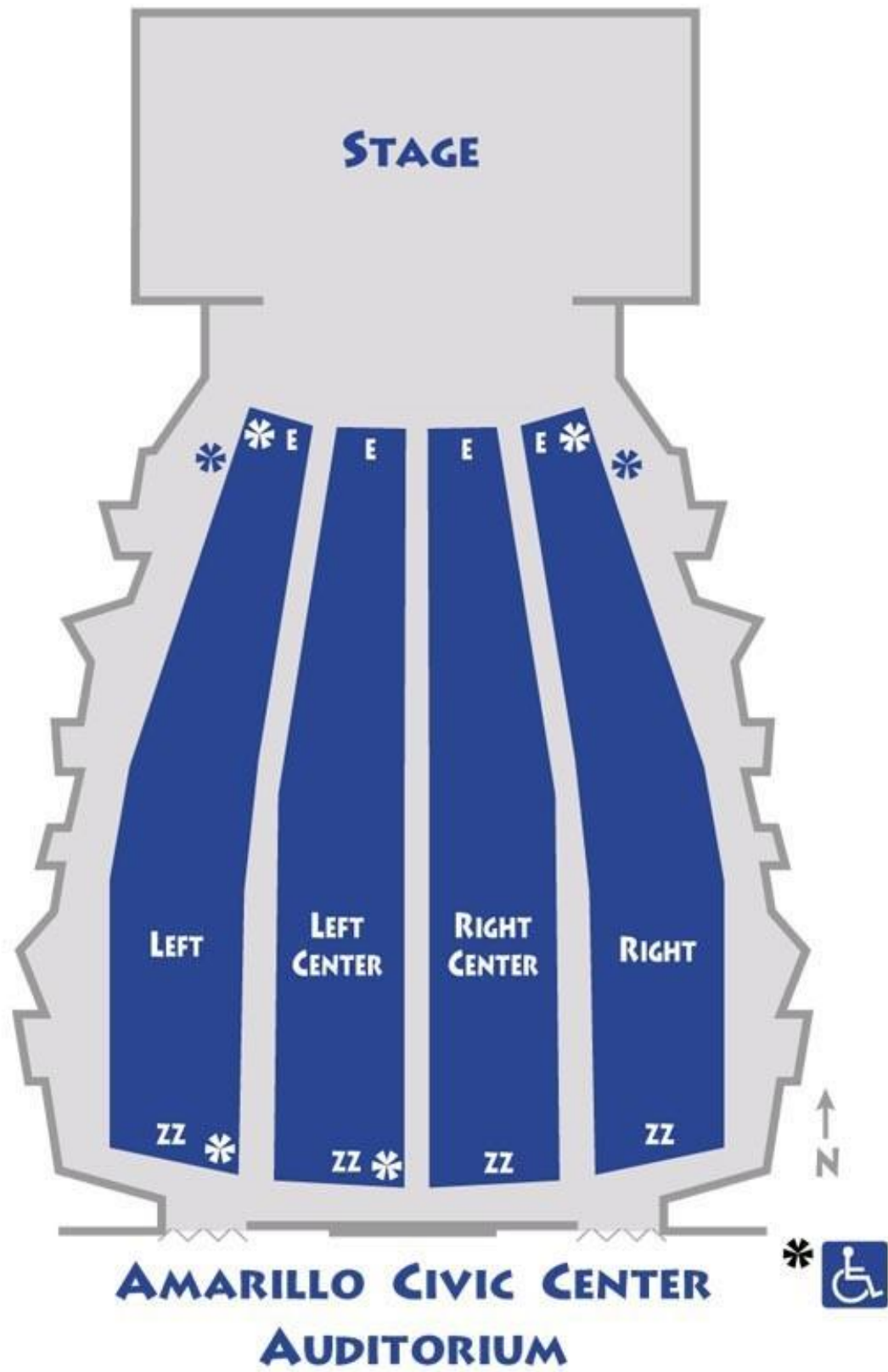
Cameron.Cockrell@amarillo.gov , Office: 806-378-4221, Cell:806-670-7923

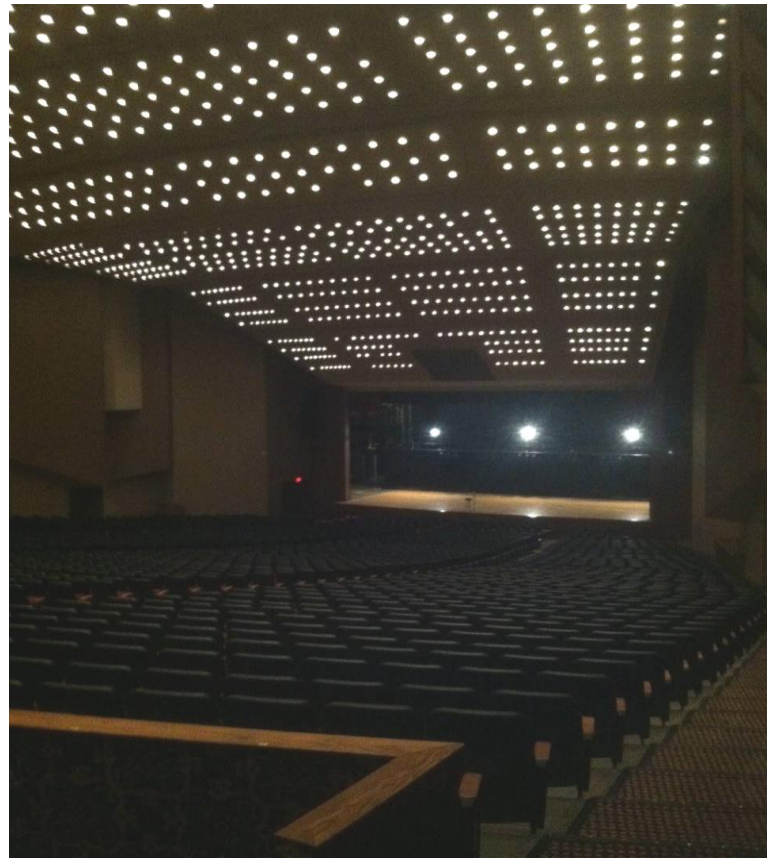
Ashley Jones – Marketing Administrator

Ashley.jones@amarillo.gov , Office:806-378-4246

COMPLEX MAP







The Amarillo Civic Center Complex Auditorium is a proscenium theatre with no balcony. The theatre seats 2,310 with an additional 72 seats available on the orchestra pit if the orchestra pit is not in use. The fly system features thirty-seven single purchase and five double purchase lines. There are also five motorized electrics and one manually operated Grand Drape with travel in both directions. There are seven dressing rooms of various sizes located off-stage left. Loading on to the stage is done via backing down a 6 degree down ramp through a 28' wide x 14'1" high overhead door. There is about a 20' push from the standard height loading dock to the stage floor.

The Auditorium has a VerTek 4886 line array system. In addition, a thirty-two-channel Midas M32 board and a 300' long, 40 channel; 8 buss audio snakes with a 75 foot monitor split is available for a fee. CD players, microphones, cables, microphone stands, and other audio/visual equipment are available on request. A Clear Com two channel headset system is in place, with jacks throughout the theatre and an HME wireless headset system that will interface with the system.

Technical Specifications

Revised 8/14/2024

Please Note the Following

1. No hang points house side of proscenium.
2. FOH snake run is minimum 275' along house right wall.
3. 5 Electrics - Motorized (see line set) fly out to 37'
4. Semi tractor/trailer rigs with large cabs may have problems backing to the dock. Please allow extra time for backing on the move-in.

STAGE MEASUREMENTS

Proscenium:	55' x 24'
Grand Drape to Back Wall	45' 02"
Grid Height	65'
Batten Length	68'
Arbor Set Capacity	800 lbs (Total Distributed on Batten on Acoustic Panel Battens, 600 lbs on all other non-motorized battens.)
Note: For any moving pipes that require more than 400 lbs. of weight please contact the Amarillo Civic Center Complex Production Management Team.	
Fly Rail:	15' high off-stage right
Loading Galleries	2
Wing Space	SL 19' 02" SR 15' 04"
Stage Height from House Floor	3' 04"
Orchestra Pit Options	3' 01 3/4" Deep from house floor Cover to house floor
Overhead Stage Door (USL)	10' 02" Wide X 11' 02" High
Loading Dock Height	3' 10" (Truck Height)
Apron Down Stage of Grand Drape:	4'
Cross Over:	Hallway behind upstage wall
Stage floor Construction:	Blonde Colored Wood sprung floor.

1 – 9' Baldwin Concert Grand Available for rent.

LAGGING INTO THE STAGE FLOOR IS NOT ALLOWED!!!

PRODUCTION CONTACTS

Derek Hisek
Production Manager
806-378-3088

Derek.Hisek@amarillo.gov

William Weatherholt
1st. Asst. Production Manager
806-378-9346

william.weatherholt@amarillo.gov

Cameron Cockrell
2nd Asst. Production Manager
806-378-4211

Cameron.cockrell@amarillo.gov

UPPER AUDITORIUM DRESSING ROOMS

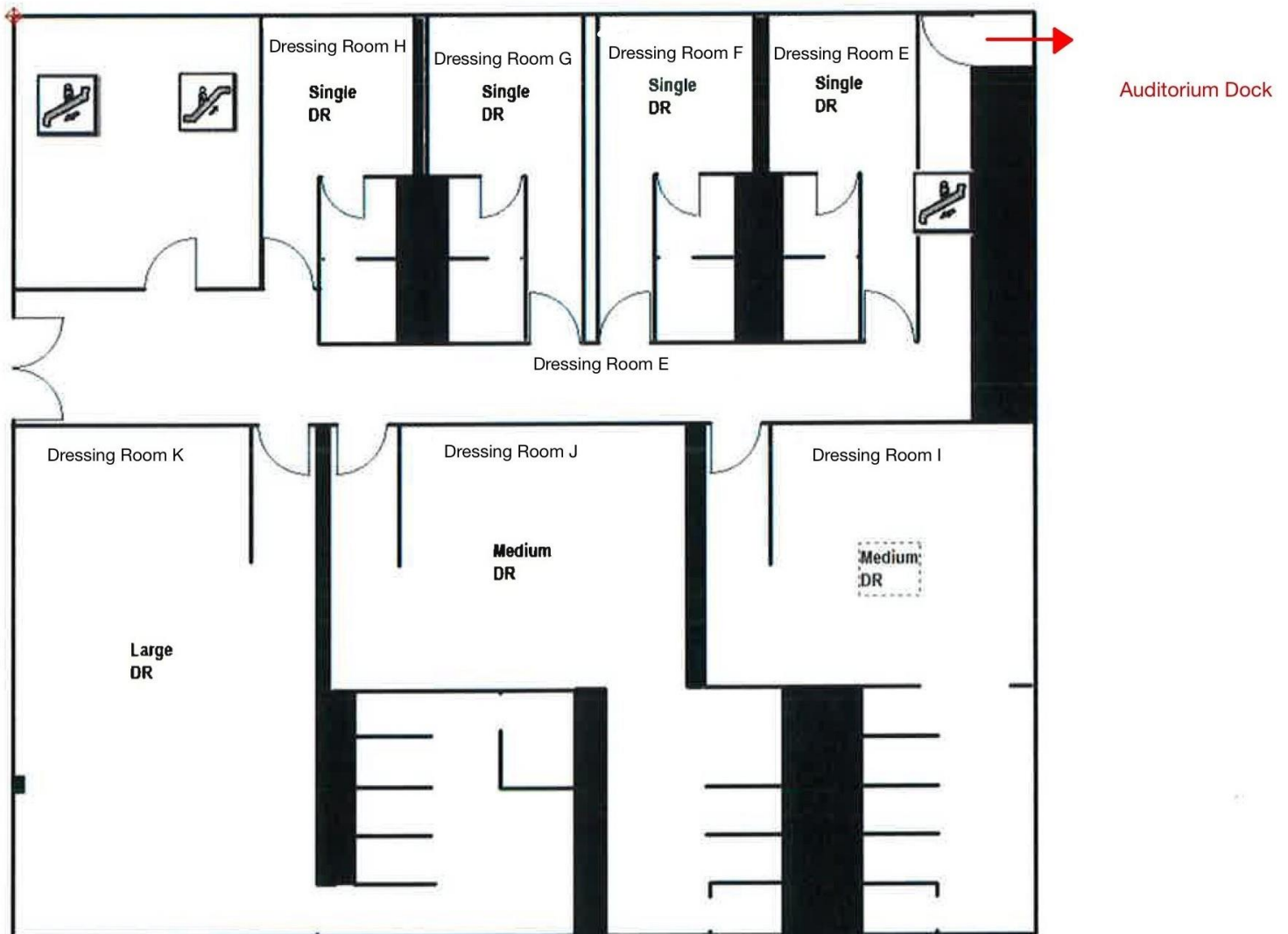
Upper level SL: 1 Large, 2 Medium, & 4 Small (all with toilets and showers)

Lower level SL: (available only by special permission when no events are in Coliseum)

2 Large Locker Rooms / 2 Small (toilets and showers)

All dressing rooms hall has Live (Unrecorded) monitors fed from touring sound console if needed, this can be tied in SL.

Diagram of the Auditorium Dressing Room Area



LOWER DRESSING ROOMS

(PLEASE BE ADVISED Dressing Room A & B are dedicated to the resident sports teams, those dressing room may or may not be available bases on teams schedule)

The Civic Center Coliseum has two (2) large dressing room areas and two (2) smaller single dressing rooms. All dressing rooms come equipped with toilets, lavatories, and shower facilities. All dressing rooms are equipped with one (1) television monitor for viewing the Coliseum show floor, or local basic cable.

The lower dressing room area also has a small production office, which can also be used as a quick-change room, and a larger Headliner Room available for various uses. Below you will see a diagram showing the area layout and the hallway the runs from the loading doors to the Coliseum Floor.

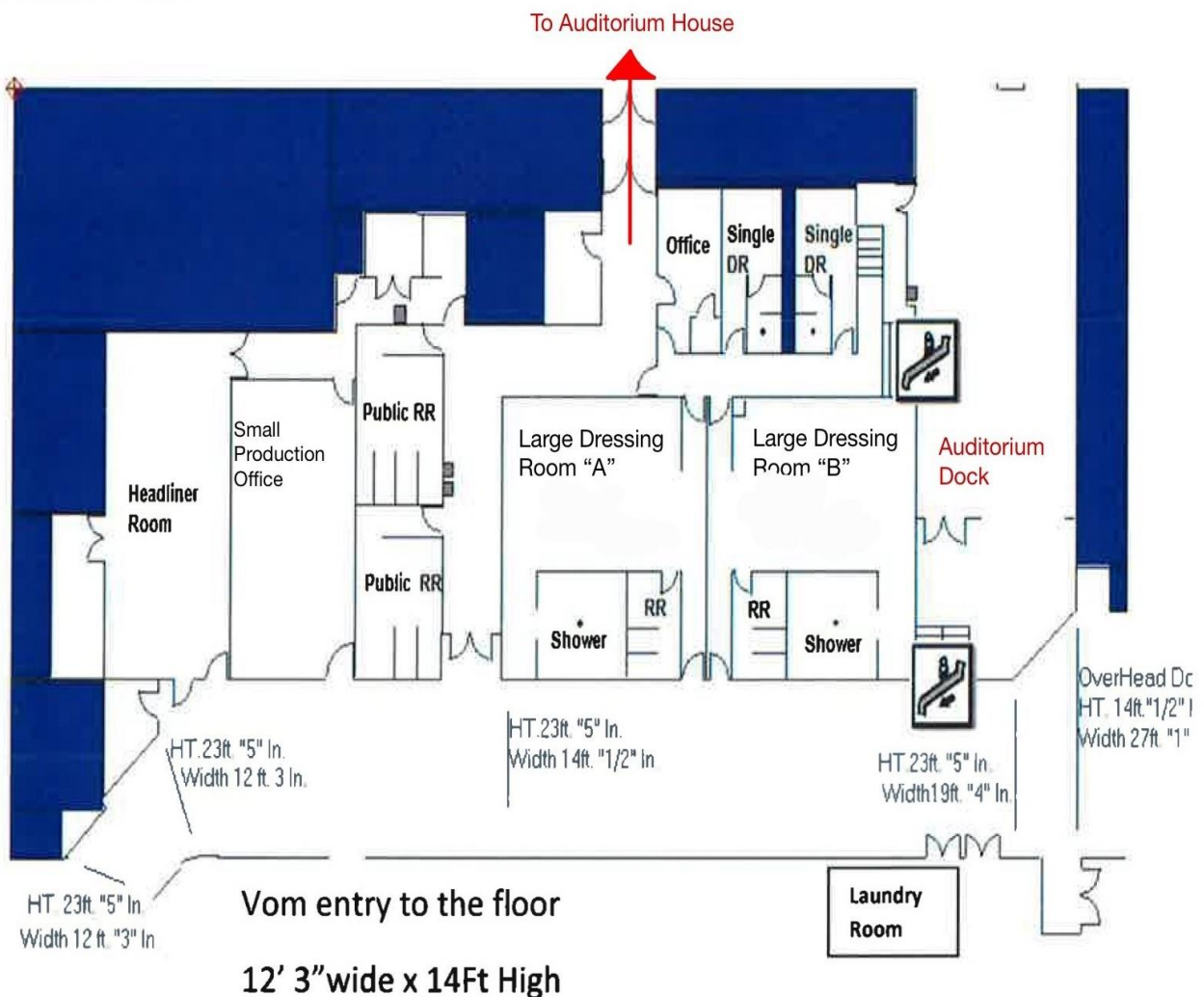


Diagram of the Lower Dressing Room Area

STAGE LIGHTING .

See lighting plan:

Lighting Control: ETC Element 2 w/ 60 faders capable of channel mode or submaster mode. Lighting Positions include, Ceiling Cove (AP) (40 circuits), 2 box booms (10 circuits each), 5 Motorized Electric Battens (35 circuits each), 5 Drop Downs SL & SR (6 Circuits each) 15 Floor packets (4 circuits each), 2 Wall Boxes (4 circuits each).

Please note there is NO FOH hand position for lighting.

Dimmer & House Lighting Inventory available on request. We are a conventional house, with a few LED wash instruments available, we do not have moving lights.

Follow Spots:

Four 2000 W. Xenon Super Troupers. House option of no more than 4 spots in the booth. (Gel available upon request)

Additional Show Power:

2 – 600 amp (3 phase)

Bare Ends or 6 – 0 Camlock

Down Stage Left

1 – 200amp (3 phase)

Cam lock (Only) – isolated Ground

Down Stage Right – SOUND power

*Please inform Production if you have reversed Ground and Neutral

Audio: PA Array system – Maxes out at 95 dB

Permanently hung outside the proscenium, cannot be removed.

Vertek 4886 Line Array System

Array Sub: 4883

Crown Micro Tech Amps

Speaker Array:

2 top subs / 8 full range speakers per side, tuned and aimed to fill entire house area.

– Flown out of sight line in front of Proscenium.

In addition:

4 – Front fill speakers can be set on request

6 – (Unmatched) stage (performer) monitors, that can be set on request.

The Drive Rack for this system is tuned and locked by JBL. NO MODIFACATION of the system and its components is allowed in any way.

Backstage Communication

Clear Com two (2) channel wired headset system in place. HME wireless headset system available and will interface with Clear Com system.

Crew Rates:

Up Riggers \$37.00 per hour 4 hour minimum

Down Riggers \$37.00 per hour 4 hour minimum

Crew Chief \$22.50 per hour

Runner (s) Please check rates with Venue, vehicle rental maybe needed for your event.

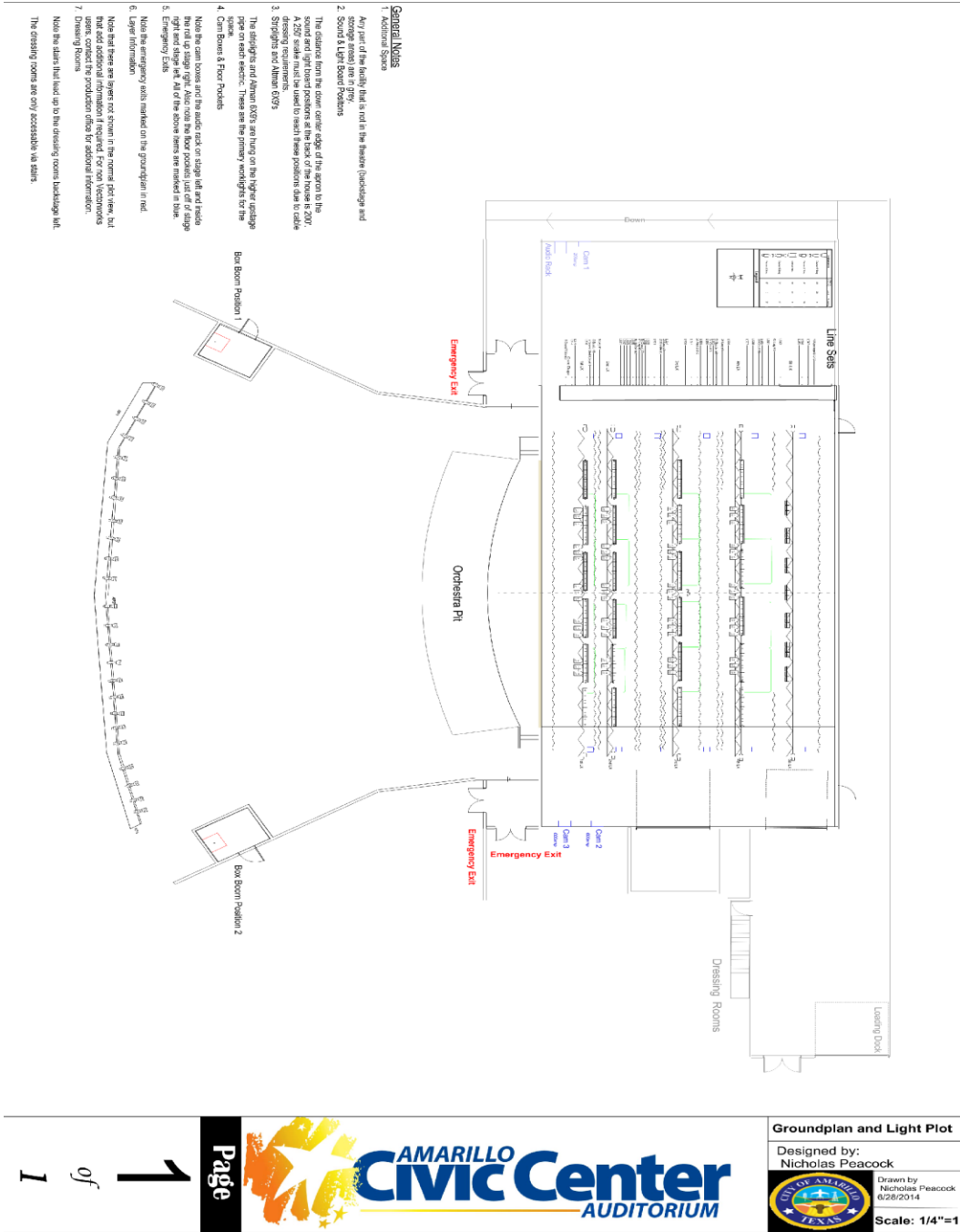
Stagehands: \$17.00 per hour 4-hour minimum

Crew Lead /Dept. Heads \$19.00 4 Hr. minimum.

All labor calls that extend over 8 hours in a 24-hour day will be billed out at an overtime rate of time and a half.

Full time production staff may change shifts between load in and show.

Stage Layout



House Patch Available upon request

Auditorium Line Set

Lineset	Distance From		Stg. Wgt. Size	House Hang	House Goods Weight	Max Capacity
	Grand	Fire Curtain				
1	-4	3"	30 lbs	Grand Valance Grand Drape	240 lbs	620 lbs
2	0"	7"	Isolated			
3	2' 0"	2' 6"	20 lbs			
4	2' 6"	3' 0"	20 lbs			
5 1st Elec	DS: 3' 0" US: 4' 0"	DS: 3' 6" US: 4' 6"	N/A	1st Motorized Electric	N/A	2500 lbs
6	4' 6"	5' 0"	20 lbs	Orch Shell Cloud 1 1st Border 1st Leg	450 lbs 140 lbs 160 lbs	620 lbs 620 lbs 620 lbs 620 lbs
7	5' 0"	5' 6"	20 lbs			
8	5' 6"	6' 0"	20 lbs			
9	6' 6"	7' 0"	20lbs			
10 2nd Elec	DS: 8' 0" US: 9' 0"	DS: 8' 6" US: 9' 6"	N/A	2nd Motorized Electric	N/A	2500 lbs
11	10' 0"	10' 6"	20 lbs	2nd Border 2nd Leg Orch Shell Cloud 2	140 lbs 160 lbs 820 lbs	620 lbs 620 lbs 620 lbs 620 lbs 620 lbs 620 lbs 620 lbs 1300 lbs 620 lbs 620 lbs
12	10' 6"	11' 0"	20 lbs			
13	11' 0"	11' 6"	20 lbs			
14	11' 6"	12' 0"	20 lbs			
15	12' 0"	12' 6"	20 lbs			
16	12' 6"	13' 0"	20 lbs			
17	13' 0"	13' 6"	20 lbs			
18	13' 6"	14' 0"	30 lbs			
19	14' 0"	14' 6"	20 lbs			
20	14' 6"	15' 0"	20 lbs			
21	15' 6"	16' 0"	20 lbs			

22	16' 6"	17' 0"	20 lbs	3rd Border	140	620lbs
23	17' 0"	17' 6"	20 lbs	3rd Leg	160	620 lbs
24	17' 6"	18' 0"	20 lbs			
25 3rd Elec	DS: 18' 6" US: 19' 6"	DS: 19' 0" US: 20' 0"	N/A	3rd Motorized Electric	N/A	2500 lbs
26	20' 6"	21' 0"	30 lbs			1300lbs
27	21' 6"	22' 0"	30 lbs			1300 lbs
28	22' 6"	23' 0"	30 lbs	Mid Stage Black- Out (Not Traveler)	Curtain: 330lbs Track: 240lbs	1300 lbs
29	23' 0"	23' 6"	20 lbs			620 lbs
30	24' 0"	24' 6"	20 lbs			
31	24' 6"	25' 0"	30 lbs	Orch Shell Cloud 3	720 lbs	1300 lbs
32	25' 0"	25' 6"	20 lbs			
33	25' 6"	26' 0"	20 lbs	4th Border	140 lbs	620 lbs
34	26' 6"	27' 0"	30 lbs	4th Leg	160 lbs	1300 lbs
35	27' 6"	28' 0"	20 lbs			
Lineset	Distance From Grand Fire Curtain		Stg. Wgt. Size	House Hang	House Goods Weight	Max Capacity
36 4th Elec	DS: 28' 6" US: 29' 6"	DS: 29' 0" US: 30' 0"	N/A	4th Motorized Electric	N/A	2500 lbs

37	30' 6"	31' 0"	30 lbs			
38	31' 6"	32' 0"	30 lbs			
39	32' 6"	33' 0"	30 lbs	Orch Shell Cloud 4	330 lbs	1300 lbs
40	33' 0"	33' 6"	20 lbs			
41	34' 0"	34' 6"	20 lbs			
42	35' 0"	35' 6"	20 lbs	5th Leg	160 lbs	620 lbs
43	36' 0"	36' 0"	50 lbs			Dbl Purchase
44 5th Elec	37' 2"	37' 8"	N/A	5th Motorized Electric	N/A	2500 lbs
	Single Baton					
45	39' 0"	39' 6"	20 lbs			Dbl Purchase
46	39' 6"	40' 0"	50 lbs			Dbl Purchase
47	40' 6"	41' 0"	50 lbs	US Full Black	660 lbs	Dbl Purchase
48	41' 6"	42' 0"	50 lbs	Vinyl Cyc	300 lbs	Dbl Purchase

House Floor Plan

