

## **2024 AMA Pavement Condition Index (PCI) Inspection**

**Project Date: July 29-August 2**

Beginning July 29, 2024, Rick Husband Amarillo International Airport along with RS&H will be conducting a Field Pavement Condition Index (PCI) inspection to update the Airport's Pavement Management Program (PMP), as required for federally obligated airports. This inspection will be gathering geospatial data and conducting the inspection using ASTM D5340, Standard Test Method for Airport Pavement Condition Index inspections. Through the course of this inspection, each respective surface will be NOTAM Closed or Work-in-Progress (WIP), as outlined below.

### **Anticipated Project Schedule and Associated NOTAMs (subject to change)**

**NOTE: AMA Aerodrome will be NOTAM closed July 30 1315Z-1430Z for UAS data capture.**

#### **JULY 29**

TWY P, P1, P2, P3, P4, P5, C, J WORK IN PROGRESS 1200Z – 2359Z

!AMA XX/XXX AMA TWY J, C, P, P1, P2, P3, P4, P5 WIP INSPECTION 2407291200-2407012359

#### **JULY 30**

RWY 4/22 CLOSED 1200Z – 2359Z AERODROME CLOSED 1315Z – 1430Z

!AMA XX/XXX AMA RWY 04/22 CLSD 2407301200-2407302359

**!AMA XX/XXX AMA AD AP CLSD 2407301315-2407301430**

#### **JULY 31**

RWY 13/31 TWY K /ASSOC CLOSED 1200Z – 2359Z

!AMA XX/XXX AMA RWY 13/31 CLSD 2407311200-2407312359

!AMA XX/XXX AMA TWY K, K1, K2, K3, K4, K5, K6 CLSD 2407311200-2407312359

#### **AUGUST 1**

RWY 13/31 TWY K /ASSOC- CLOSED TWY P BETWEEN TWY C AND P5 WIP 1200Z – 2359Z

!AMA XX/XXX AMA RWY 13/31 CLSD 2408011200-2408012359

!AMA XX/XXX AMA TWY K, K1, K2, K3, K4, K5, K6 CLSD 2408011200-2408012359

!AMA XX/XXX AMA TWY P BTN TWY C AND TWY P5 WIP INSPECTION 2408011200-2408012359

#### **AUGUST 2**

TERMINAL & GA RAMPS / NON-MOVEMENT AREAS WORK IN PROGRESS 1200Z – 2359Z

!AMA XX/XXX AMA APRON TERMINAL RAMP WIP INSPECTION 2408021200-2408022359

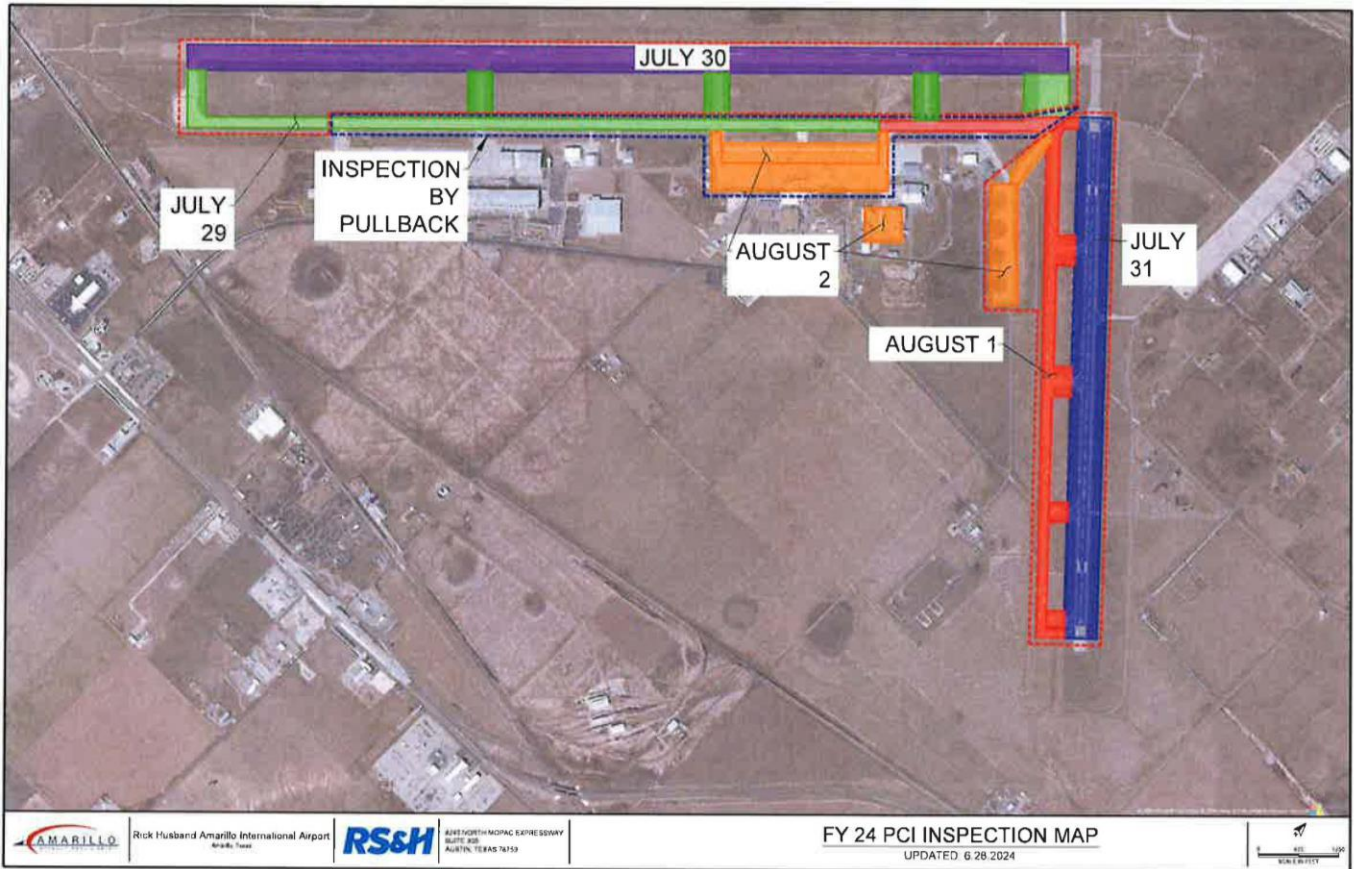
!AMA XX/XXX AMA APRON GA RAMP WIP INSPECTION 2408021200-2408022359

#### **JULY 30 – AUGUST 1**

!AMA XX/XXX AMA AIRSPACE UAS WI AN AREA DEFINED AS 2NM RADIUS OF AMA SFC-300FT AGL DLY 1200-2359  
2407301200-2408012359

**Continued next page.**

## 2024 AMA PCI PHASING GRAPHIC



- Taxiway P / associated taxiways PCI inspections will be conducted on a pullback basis (WIP).
- Taxiway K / associated taxiways PCI inspections will be conducted on closed taxiways.
- All runway PCI inspections will be conducted on closed runways.
- Data collection via Unmanned Aircraft Systems (UAS) is authorized only over closed movement area surfaces.