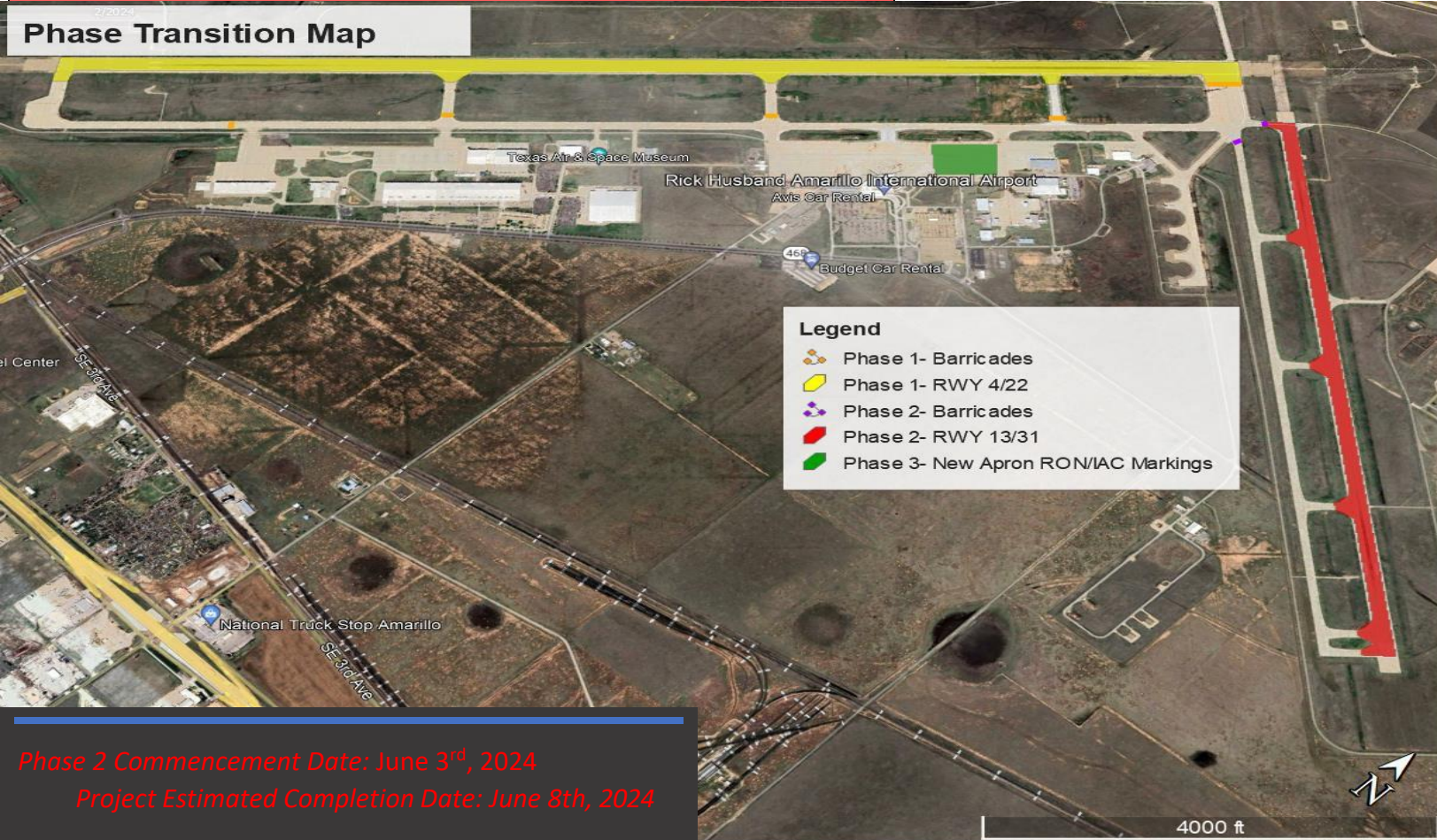


AMA Airfield Remarking Project- 2024

Phase Transition Map



Phase 2 Commencement Date: June 3rd, 2024
Project Estimated Completion Date: June 8th, 2024

Project Summary:

AMA will be completing its airfield-wide remarking project that began in 2023 with the taxiway system markings. This year, the project focus is on the airport’s runways, which will have their rubber deposits removed and centerline markings refreshed to ensure that they remain in compliance with FAA standards. The project will consist of three main closures. Phase 1 of this project will involve Runway 4/22’s closure and phase 2 will involve the closure of both Runway 13/31 and Taxiway Kilo and its associated stub taxiways. Phase 3 will involve the placement of three brand new remain overnight markings that will provide adequate parking space on the terminal ramp for future aircraft diversions. Additionally, phase 3 will include two brand new parking space markings for the International Aerospace Coatings ramp as well.

Hi-Lite Airfield Services LLC remains the selected contractor to finish the project, with Centerline Engineering & Consulting, LLC providing the required project survey work. Airport management will ensure that: contractors are escorted on property at all times, construction barricades are appropriately placed, and that NOTAMs are issued as needed. The figure above depicts where airfield rubber removal and painting will take place. Please refer to the project phasing plan below for phasing and surface closure details.

Project Phasing Plan:

Phasing Plan as of 05/28/2024	Relevant NOTAMs	Markings
Phase 2 June 3 rd , 5:00am- June 7 th , 5:00pm	!AMA XX/XXX AMA RWY 13/31 CLSD !AMA XX/XXX AMA K, K1, K2, K3, K4, K5, K6 CLSD	RWY 13/31 Rubber Removal Runway Centerlines Yellow Lead on/ Lead off Markings Yellow Taxiway Edge Markings

***Closed surfaces will remain closed until the relevant phase work is complete.**

***Airport Operations will communicate if phase transitions will occur earlier or later than expected with ATCT.**

***Saturday, June 8th would be reserved to complete any unfinished work initiated earlier in the week.**

Associated Timeframes

Hi-Lite Daily Work Period:

➤ 14- hours | 6:00am- 8:00pm

*7:00pm- 8:00pm will be for cleanup and equipment removal

Closure Devices

- ❖ Low-profile Barricades
- ❖ Lighted Xs

Project Phase Transition Tasks

1. NOTAM closures are issued by Airport Operations
 2. Closure devices are placed by Airport Maintenance
 3. Work ensues with positive escort
 4. Surfaces are inspected and reopened by Airport Operations
 5. Closure devices are removed by Airport Maintenance
- *Repeat for the subsequent phase until project completion*

Notes:

1. No phase transitions shall occur on any Friday or Saturday for the project duration without prior approval from the Airport.
2. No Sunday work allowable.
3. Contractor work shall be limited to only one phase at a time.
4. Contractor work shall be limited to the agreed upon Production/Staffing schedule.
5. Should the contractor complete a phase earlier than anticipated, the contractor shall request a phase transition IAW Notes 1, 3, and 6.

6. AMA shall conduct an acceptance inspection prior to a scheduled phase transition (Allow 2.0 hrs. for inspection and barricade movement). a. All work within the phase shall be accomplished prior to the commencement of the acceptance inspection.
7. Contractor shall have a superintendent or designee onsite while work is occurring on the airfield.
8. Kickoff/Safety briefing required prior to the start of the project or the addition of a new superintendent or designee.
9. AMA staff can call for a work stoppage for identified safety conditions or non-conformities to FAA standards.
10. Additional survey markings will be placed, so that Hi-Lite can clean surfaces prior to paint placement without removing survey work references.
11. Only Type 1 Beads are to be utilized during this project phase.
12. The project staging area for airfield painting equipment will be Alert Pad 2.
13. Waterway/Debris drop will be at Alert Pad 1.
14. The project will be considered complete once all punch-list items have been satisfied.