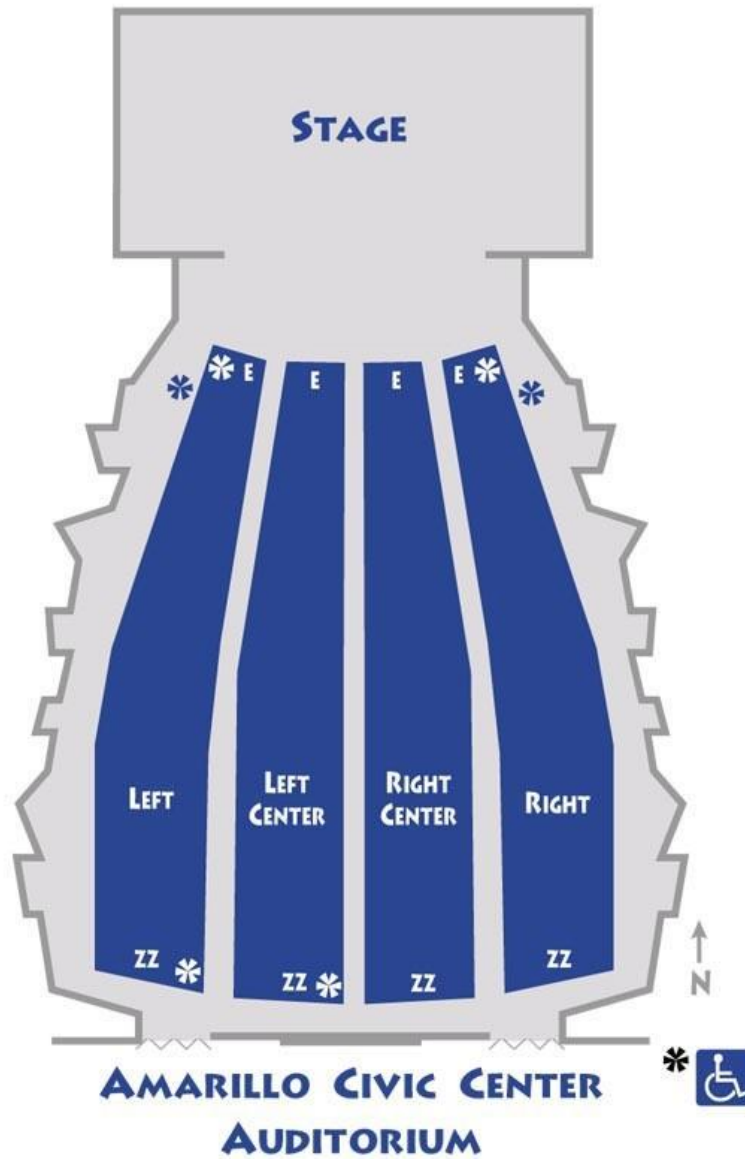
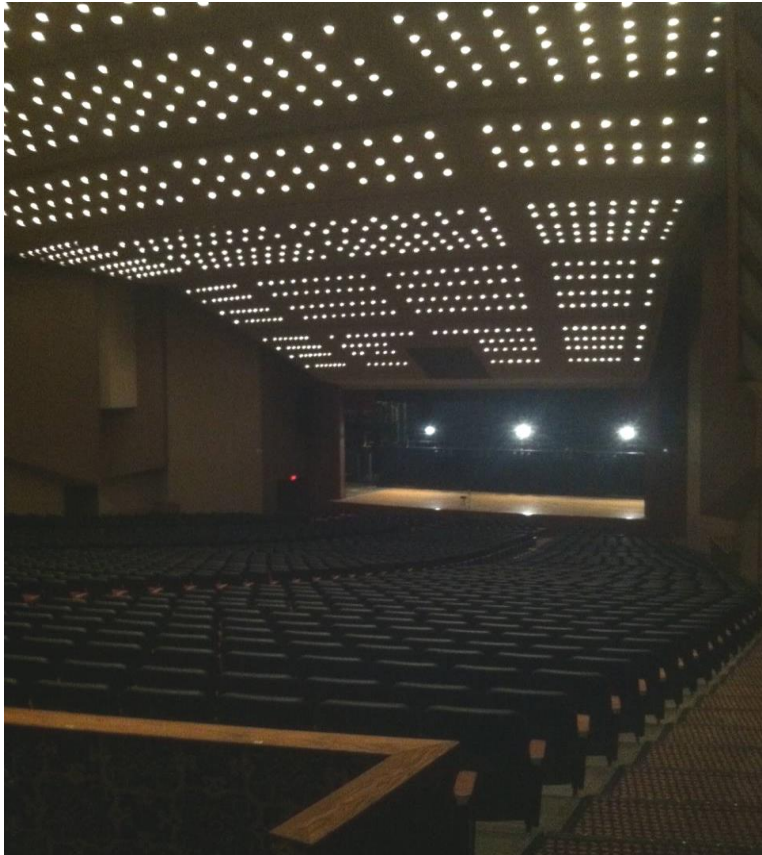


AUDITORIUM



Amarillo Civic Center Complex Auditorium
401 S. Buchanan
Amarillo, Texas 79101



The Amarillo Civic Center Complex Auditorium is a proscenium theatre with no balcony. The theatre seats 2,310 with an additional 72 seats available on the orchestra pit if the orchestra pit is not in use. The fly system features thirty-seven single purchase and five double purchase lines. There are also five motorized electrics and one manually operated Grand Drape with travel in both directions. There are seven dressing rooms of various sizes located off-stage left. Loading on to the stage is done via backing down a 6 degree down ramp through a 28' wide x 14'1" high overhead door. There is about a 20' push from the standard height loading dock to the stage floor.

The Auditorium has a VerTek 4887 line array system. In addition, a thirty-two-channel Midas M32 board and a 300' long, 40 channel; 8 buss audio snakes with a 75 foot monitor split is available for a fee. CD players, microphones, cables, microphone stands, and other audio/visual equipment are available on request. A Clear Com two channel headset system is in place, with jacks throughout the theatre and an HME wireless headset system that will interface with the system.

Technical Specifications

Revised 9/2/2022

Please Note the Following

1. No hang points house side of proscenium.
2. FOH snake run is minimum 275' along house right wall.
3. 5 Electrics - Motorized (see line set) fly out to only 37'
4. Semi tractor/trailer rigs with large cabs may have problems backing to the dock. Please allow extra time for backing on the move-in.

STAGE MEASUREMENTS

Proscenium:	55' x 24'
Grand Drape to Back Wall	45' 02"
Grid Height	65'
Batten Length	68'
Arbor Set Capacity	800 lbs (Total Distributed on Batten on Acoustic Panel Battens, 600 lbs on all other non-motorized battens.)
Note: For any moving pipes that require more than 400 lbs. of weight please contact the Amarillo Civic Center Complex Production Management Team.	
Fly Rail:	15' high off-stage right
Loading Galleries	2
Wing Space	SL 19' 02" SR 15' 04"
Stage Height from House Floor	3' 04"
Orchestra Pit Options	3' 01 ¾" Deep from house floor Cover to house floor
Overhead Stage Door (USL)	10' 02" Wide X 11' 02" High
Loading Dock Height	3' 10" (Truck Height)
Apron Down Stage of Grand Drape:	4'
Cross Over:	Hallway behind upstage wall
Stage floor Construction:	Blonde Colored Wood sprung floor.

1 – 9' Baldwin Concert Grand Available for rent.

LAGGING INTO THE STAGE FLOOR IS NOT ALLOWED!!!

CONTACTS

Derek Hisek
Production Manager
806-378-3088
Derek.Hisek@amarillo.gov

William Weatherholt
Asst. Production Manager
806-378-9346
willian.weatherholt@amarillo.gov

Cameron Cockrell
Asst. Production Manager
806-378-4211
Cameron.cockrell@amarillo.gov

DRESSING ROOMS

Upper level SL: 1 Large, 2 Medium, & 4 Small (all with toilets and showers)

Lower level SL: (available only by special permission when no events are in Coliseum)

2 Large Locker Rooms / 2 Small (toilets and showers)

All dressing rooms hall has Live (Unrecorded) monitors fed from touring sound console if needed, this can be tied in SL.

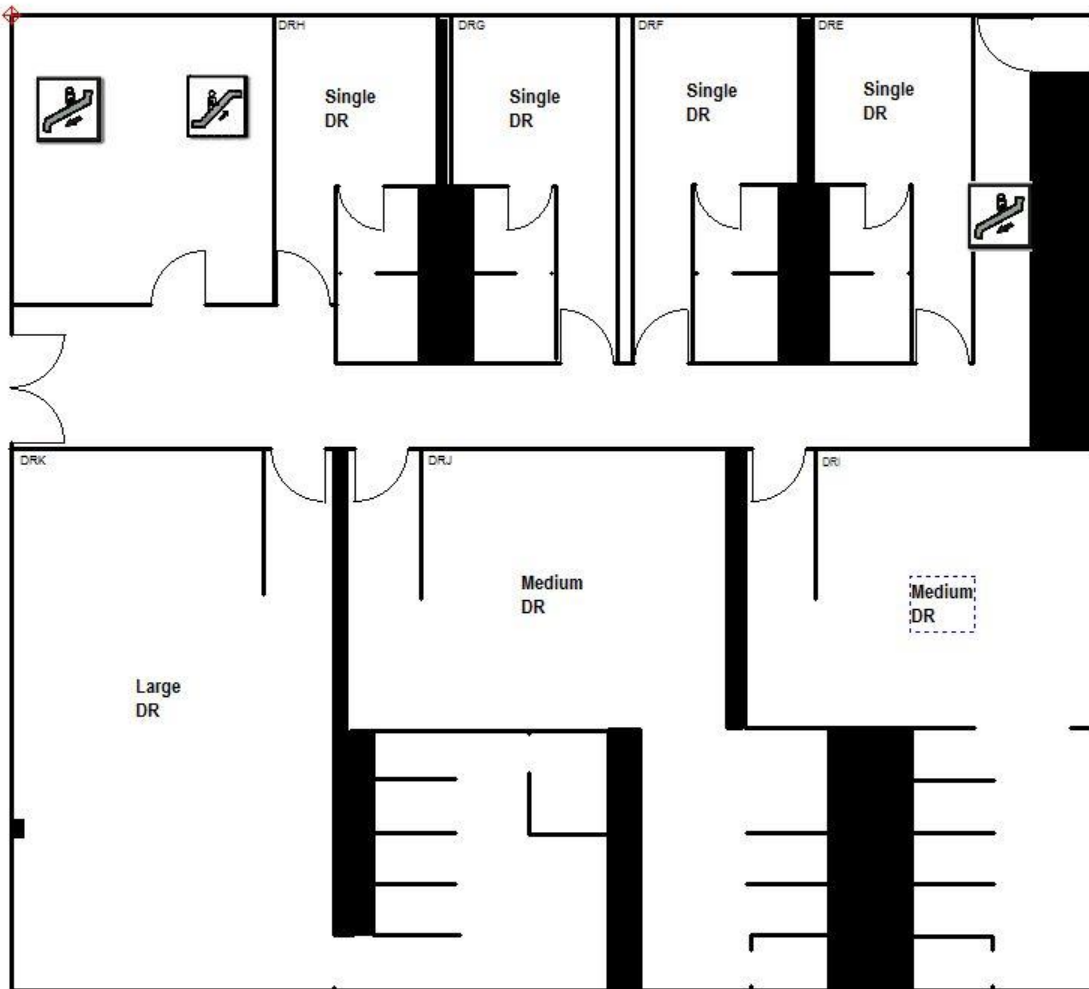


Diagram of the Auditorium Dressing Room Area

STAGE LIGHTING .

See lighting plan:

Lighting Control: ETC Element 2 w/ 60 faders capable of channel mode or submaster mode.

Lighting Positions include, Ceiling Cove (AP) (40 circuits), 2 box booms (10 circuits each), 5 Motorized Electric Battens (35 circuits each), 5 Drop Downs SL & SR (6 Circuits each) 15 Floor packets (4 circuits each), 2 Wall Boxes (4 circuits each).

Please note there is NO FOH hand position for lighting
Dimmer & House Lighting Inventory available on request. We are a conventional house, with a few LED wash instruments available, we do not have moving lights.

Follow Spots:

Four 2000 W. Xenon Super Troupers. House option of no more than 4 spots in the booth. (Gel available upon request)

Additional Show Power:

2 – 600 amp (3 phase)

Bare Ends or 6 – 0 Camlock

Down Stage Left

1 – 200amp (3 phase)

Cam lock (Only) – isolated Ground

Down Stage Right – SOUND power

*Please inform Production if you have reversed Ground and Neutral

Audio: PA Array system – Maxes out at 95 dB

Vertek 4887 Line Array System

Crown Micro Tech Amps

Speaker Array:

2 top subs / 8 full range speakers per side, tuned and aimed to fill entire house area.

– Flown out of sight line in front of Proscenium.

In addition:

4 – Front fill speakers can be set on request

6 – (Unmatched) stage (performer) monitors, that can be set on request.

The Drive Rack for this system is tuned and locked by JBL. NO MODIFACATION of the system and its components is allowed in any way.

Backstage Communication

Clear Com two (2) channel wired headset system in place. HME wireless headset system available and will interface with Clear Com system.

Crew Rates:

Up Riggers \$37.00 per hour 4 hour minimum

Down Riggers \$37.00 per hour 4 hour minimum

Crew Chief \$22.50 per hour

Runner (s) Please check rates with Venue, vehicle rental maybe needed for your event

Stagehands: \$17.00 per hour 2-hour minimum

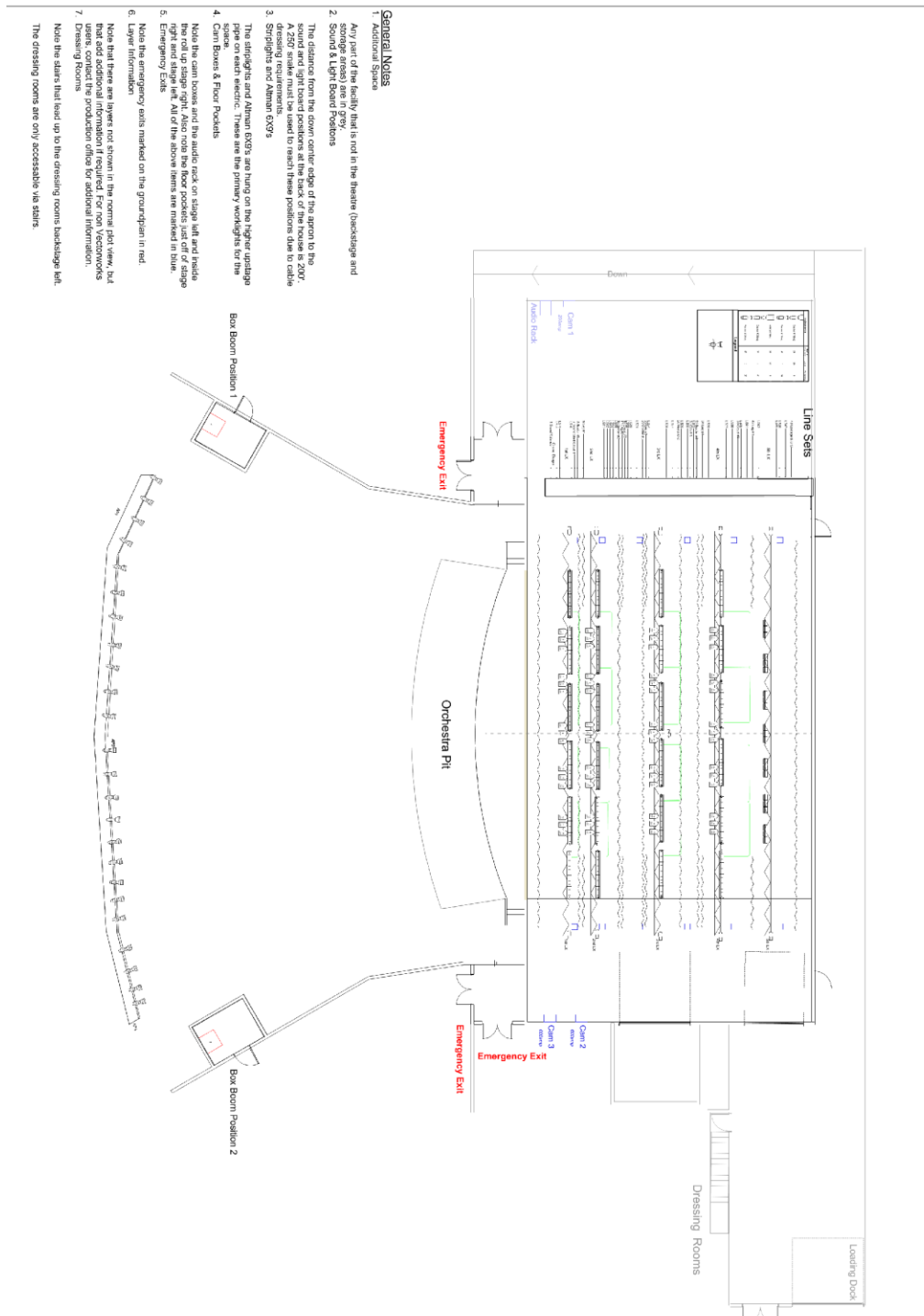
Crew Lead /Dept. Heads \$19.00 2 Hr. minimum

All labor calls that extend over 8 hours in a 24-hour day will be billed out at an overtime rate of time and a half.

Full time production staff may change shifts between load in and show.

Stage Layout

Included in the “Attachments” section of this PDF you will find an interactive version of this diagram allowing you to focus in on details and access the “Vectorworks” features. You must have Vectorworks loaded on your device to access these extra features, but it is not necessary to view the details of the standard diagram attachment.



Auditorium Line Set

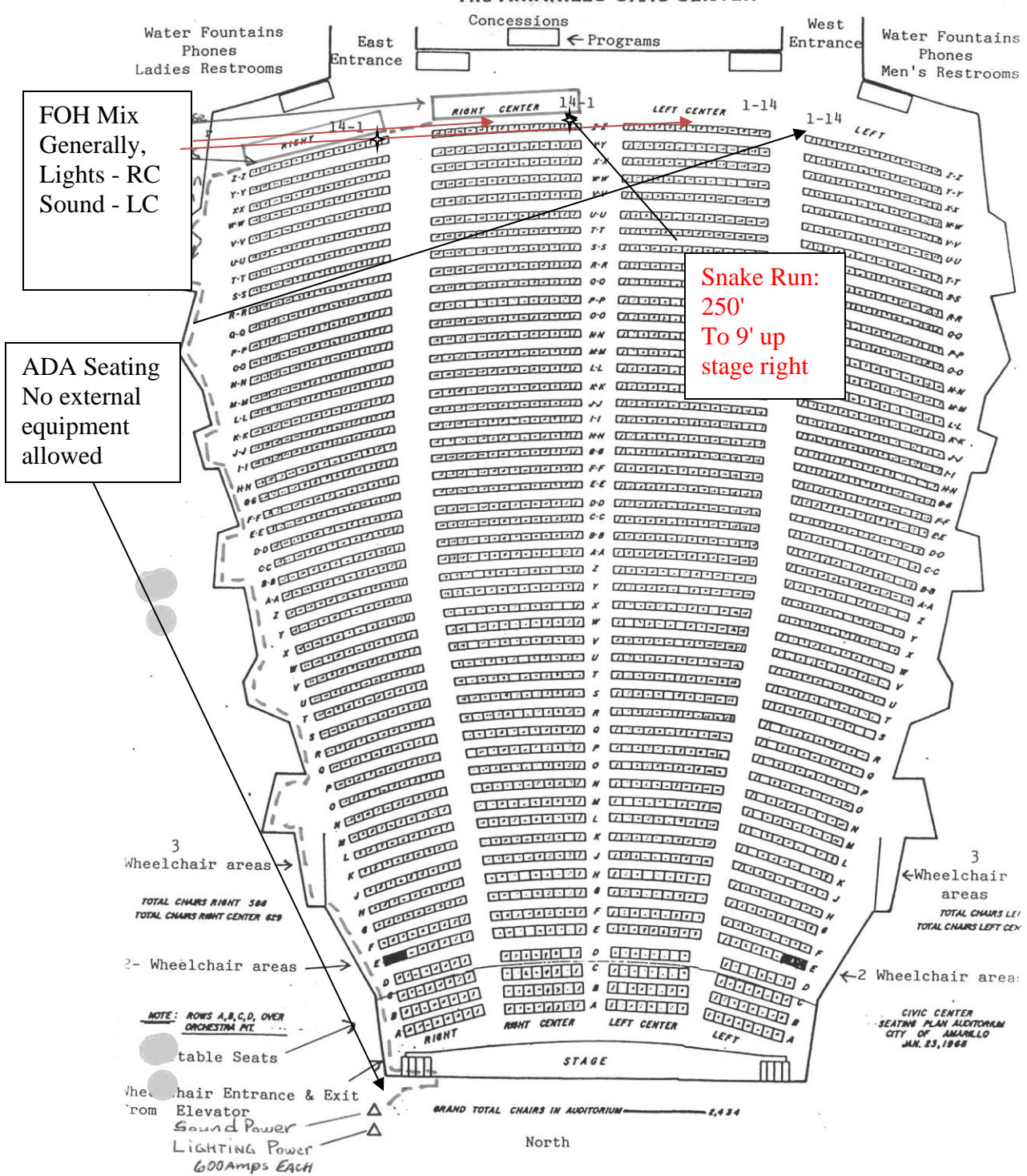
Lineset	Distance From		Stg. Wgt. Size	House Hang	House Goods Weight	Max Capacity
	Grand	Fire Curtain				
1	-4	3"	30 lbs	Grand Valance Grand Drape	240 lbs	620 lbs
2	0"	7"	Isolated			N/A
3	2' 0"	2' 6"	20 lbs			620 lbs
4	2' 6"	3' 0"	20 lbs			620 lbs
5 1st Elec	DS: 3' 0" US: 4' 0"	DS: 3' 6" US: 4' 6"	N/A	1st Motorized Electric	N/A	2500 lbs
6	4' 6"	5' 0"	20 lbs	Orch Shell Cloud 1 1st Border 1st Leg	450 lbs 140 lbs 160 lbs	620 lbs
7	5' 0"	5' 6"	20 lbs			620 lbs
8	5' 6"	6' 0"	20 lbs			620 lbs
9	6' 6"	7' 0"	20lbs			620 lbs
10 2nd Elec	DS: 8' 0" US: 9' 0"	DS: 8' 6" US: 9' 6"	N/A	2nd Motorized Electric	N/A	2500 lbs
11	10' 0"	10' 6"	20 lbs			620 lbs
12	10' 6"	11' 0"	20 lbs			620 lbs
13	11' 0"	11' 6"	20 lbs			620 lbs
14	11' 6"	12' 0"	20 lbs			620 lbs
15	12' 0"	12' 6"	20 lbs			620 lbs

16	12' 6"	13' 0"	20 lbs	2nd Border 2nd Leg Orch Shell Cloud 2	140 lbs	620 lbs
17	13' 0"	13' 6"	20 lbs		160 lbs	620 lbs
18	13' 6"	14' 0"	30 lbs		820 lbs	1300 lbs
19	14' 0"	14' 6"	20 lbs			620 lbs
20	14' 6"	15' 0"	20 lbs			620 lbs
21	15' 6"	16' 0"	20 lbs			
22	16' 6"	17' 0"	20 lbs		3rd Border	140
23	17' 0"	17' 6"	20 lbs	3rd Leg	160	620 lbs
24	17' 6"	18' 0"	20 lbs			
25 3rd Elec	DS: 18' 6" US: 19' 6"	DS: 19' 0" US: 20' 0"	N/A	3rd Motorized Electric	N/A	2500 lbs
26	20' 6"	21' 0"	30 lbs	Mid Stage Black- Out (Not Traveler)	Curtain: 330lbs Track: 240lbs	1300lbs
27	21' 6"	22' 0"	30 lbs			1300 lbs
28	22' 6"	23' 0"	30 lbs			1300 lbs
29	23' 0"	23' 6"	20 lbs			620 lbs
30	24' 0"	24' 6"	20 lbs	Orch Shell Cloud 3	720 lbs	1300 lbs
31	24' 6"	25' 0"	30 lbs			
32	25' 0"	25' 6"	20 lbs			
33	25' 6"	26' 0"	20 lbs	4th Border	140 lbs	620 lbs
34	26' 6"	27' 0"	30 lbs	4th Leg	160 lbs	1300 lbs

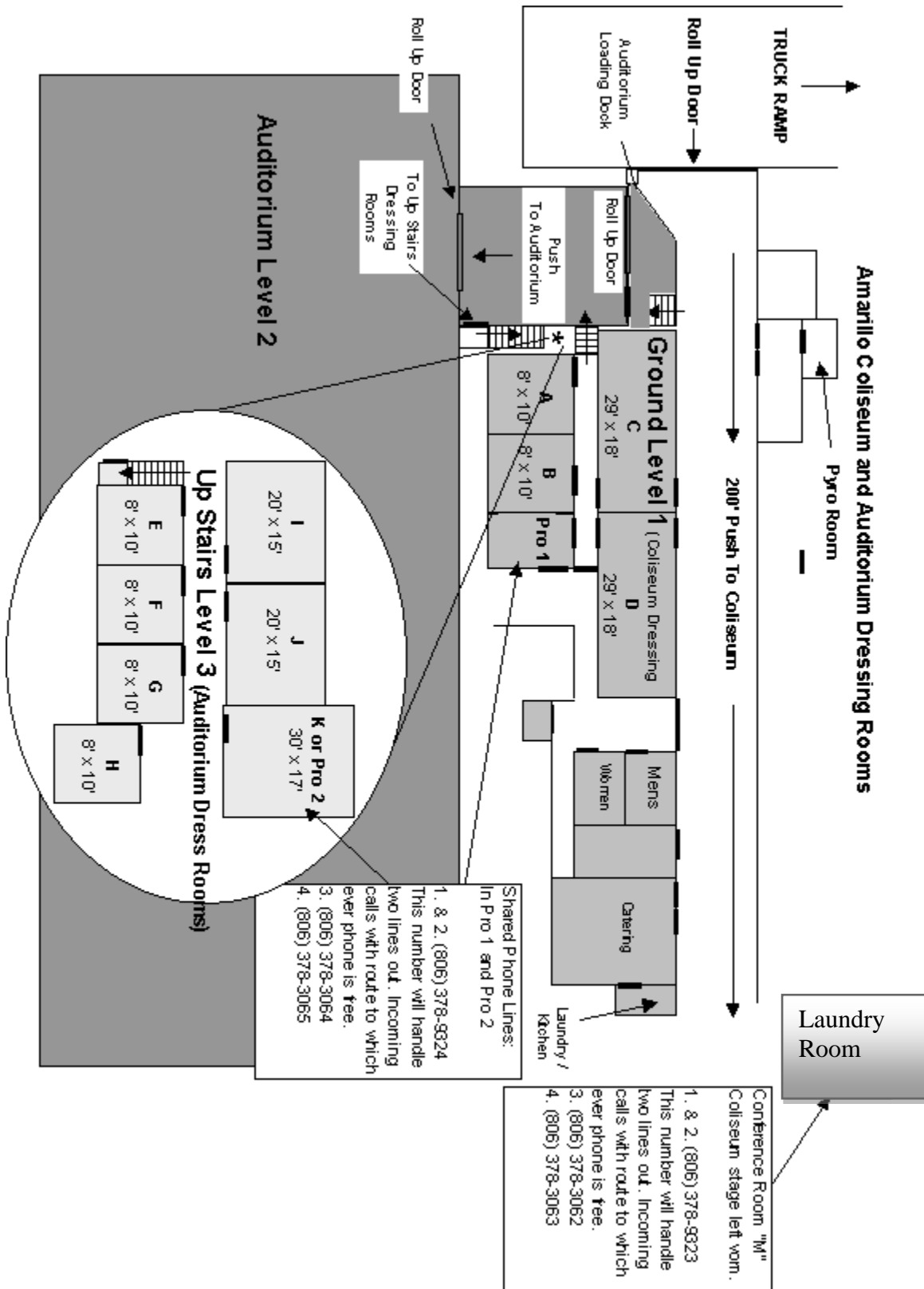
35	27' 6"	28' 0"	20 lbs			
Lineset	Distance From		Stg. Wgt. Size	House Hang	House Goods Weight	Max Capacity
	Grand	Fire Curtain				
36 4th Elec	DS: 28' 6" US: 29' 6"	DS: 29' 0" US: 30' 0"	N/A	4th Motorized Electric	N/A	2500 lbs
37	30' 6"	31' 0"	30 lbs	Orch Shell Cloud 4 5th Leg	330 lbs	1300 lbs
38	31' 6"	32' 0"	30 lbs			
39	32' 6"	33' 0"	30 lbs			
40	33' 0"	33' 6"	20 lbs			
41	34' 0"	34' 6"	20 lbs			
42	35' 0"	35' 6"	20 lbs			
43	36' 0"	36' 0"	50 lbs			
44 5th Elec	37' 2"	37' 8"	N/A	5th Motorized Electric	N/A	2500 lbs
	Single Baton					
45	39' 0"	39' 6"	20 lbs			Dbl Purchase
46	39' 6"	40' 0"	50 lbs			Dbl Purchase
47	40' 6"	41' 0"	50 lbs	US Full Black	660 lbs	Dbl Purchase

48	41' 6"	42' 0"	50 lbs	Vinyl Cyc	300 lbs	DbI Purchase
----	--------	--------	--------	-----------	---------	--------------

House Floor Plan



Dressing Rooms



For Additional Information Contact:

Derek Hisek
Production Manager
806-378-3088

Derek.Hisek@amarillo.gov

William Weatherholt
Asst. Production Manager
806-378-9346

willian.weatherholt@amarillo.gov

Cameron Cockrell
Asst. Production Manager
806-378-4211

Cameron.cockrell@amarillo.gov