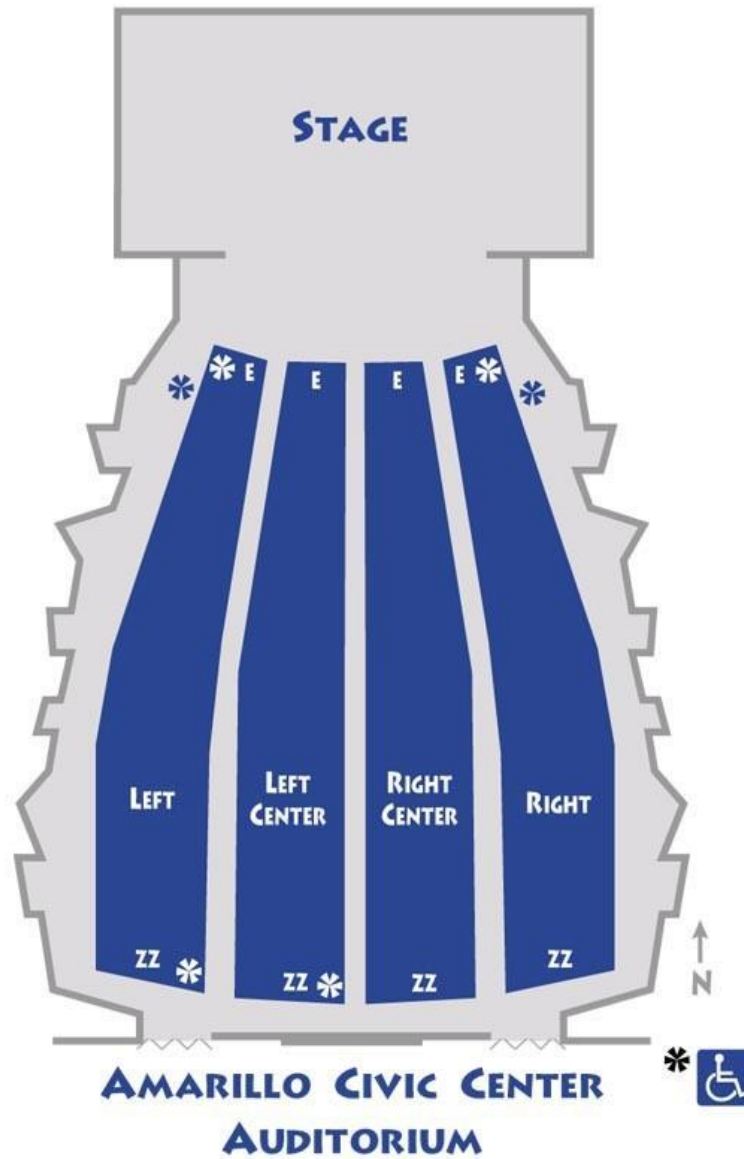
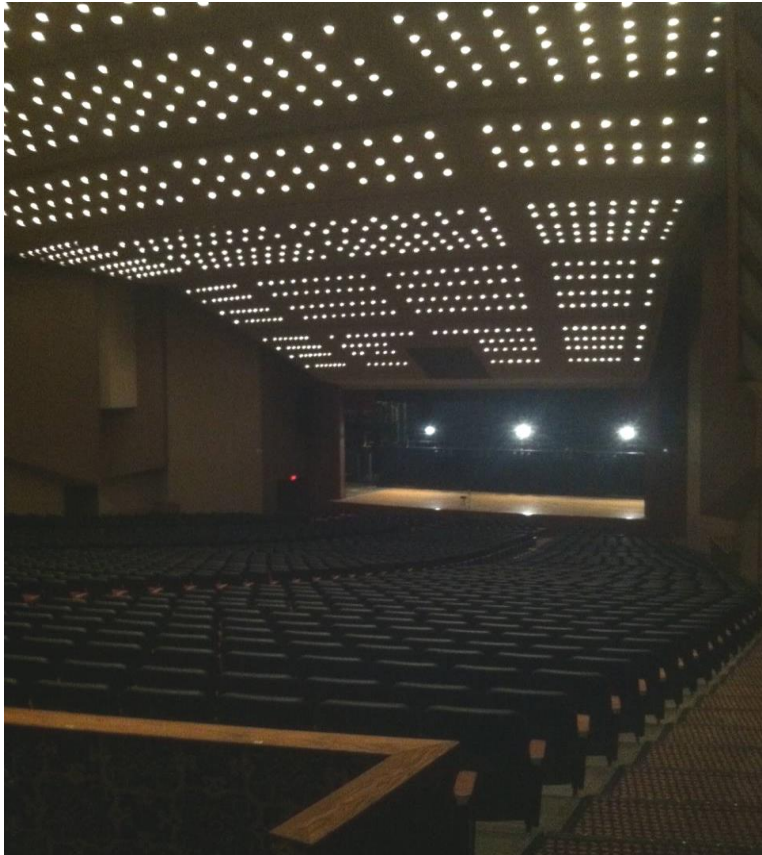


# AUDITORIUM



**Amarillo Civic Center Complex Auditorium**  
**401 S. Buchanan**  
**Amarillo, Texas 79101**



The Amarillo Civic Center Complex Auditorium is a proscenium theatre with no balcony. The theatre seats 2,310 with an additional 72 seats available on the orchestra pit if the orchestra pit is not in use. The fly system features thirty-seven single purchase and five double purchase lines. There are also five motorized electrics and one manually operated Grand Drape with travel in both directions. There are seven dressing rooms of various sizes located off-stage left. Loading on to the stage is done via backing down a 6 degree down ramp through a 28' wide x 14'1" high overhead door. There is about a 20' push from the standard height loading dock to the stage floor.

The Auditorium has a VerTek 4887 line array system. In addition, a thirty-two-channel Midas M32 board and a 300' long, 40 channel; 8 buss audio snakes with a 75 foot monitor split is available for a fee. CD players, microphones, cables, microphone stands, and other audio/visual equipment are available on request. A Clear Com two channel headset system is in place, with jacks throughout the theatre and an HME wireless headset system that will interface with the system.

# Technical Specifications

Revised 9/2/2022

## Please Note the Following

1. **No hang points house side of proscenium.**
2. **FOH snake run is minimum 275' along house right wall.**
3. **5 Electrics - Motorized (see line set) fly out to only 37'**
4. **Semi tractor/trailer rigs with large cabs may have problems backing to the dock. Please allow extra time for backing on the move-in.**

## STAGE MEASUREMENTS

Proscenium:	55' x 24'
Grand Drape to Back Wall	45' 02"
Grid Height	65'
Batten Length	68'
Arbor Set Capacity	800 lbs (Total Distributed on
Batten on Acoustic Panel Battens, 600 lbs on all other non-motorized battens.)	
<b>Note: For any moving pipes that require more than 400 lbs. of weight please contact the Amarillo Civic Center Complex Production Management Team.</b>	
Fly Rail:	15' high off-stage right
Loading Galleries	2
Wing Space	SL 19' 02" SR 15' 04"
Stage Height from House Floor	3' 04"
Orchestra Pit Options	3' 01 3/4" Deep from house floor Cover to house floor
Overhead Stage Door (USL)	10' 02" Wide X 11' 02" High
Loading Dock Height	3' 10" (Truck Height)
Apron Down Stage of Grand Drape:	4'
Cross Over:	Hallway behind upstage wall
Stage floor Construction:	Blonde Colored Wood sprung floor.

## LAGGING INTO THE STAGE FLOOR IS NOT ALLOWED!!!

## CONTACTS

Derek Hisek  
Production Manager  
806-378-3088  
[Derek.Hisek@amarillo.gov](mailto:Derek.Hisek@amarillo.gov)

William Weatherholt  
Asst. Production Manager  
806-378-9346  
[willian.weatherholt@amarillo.gov](mailto:willian.weatherholt@amarillo.gov)

Cameron Cockrell  
Asst. Production Manager  
806-378-4211  
[Cameron.cockrell@amarillo.gov](mailto:Cameron.cockrell@amarillo.gov)

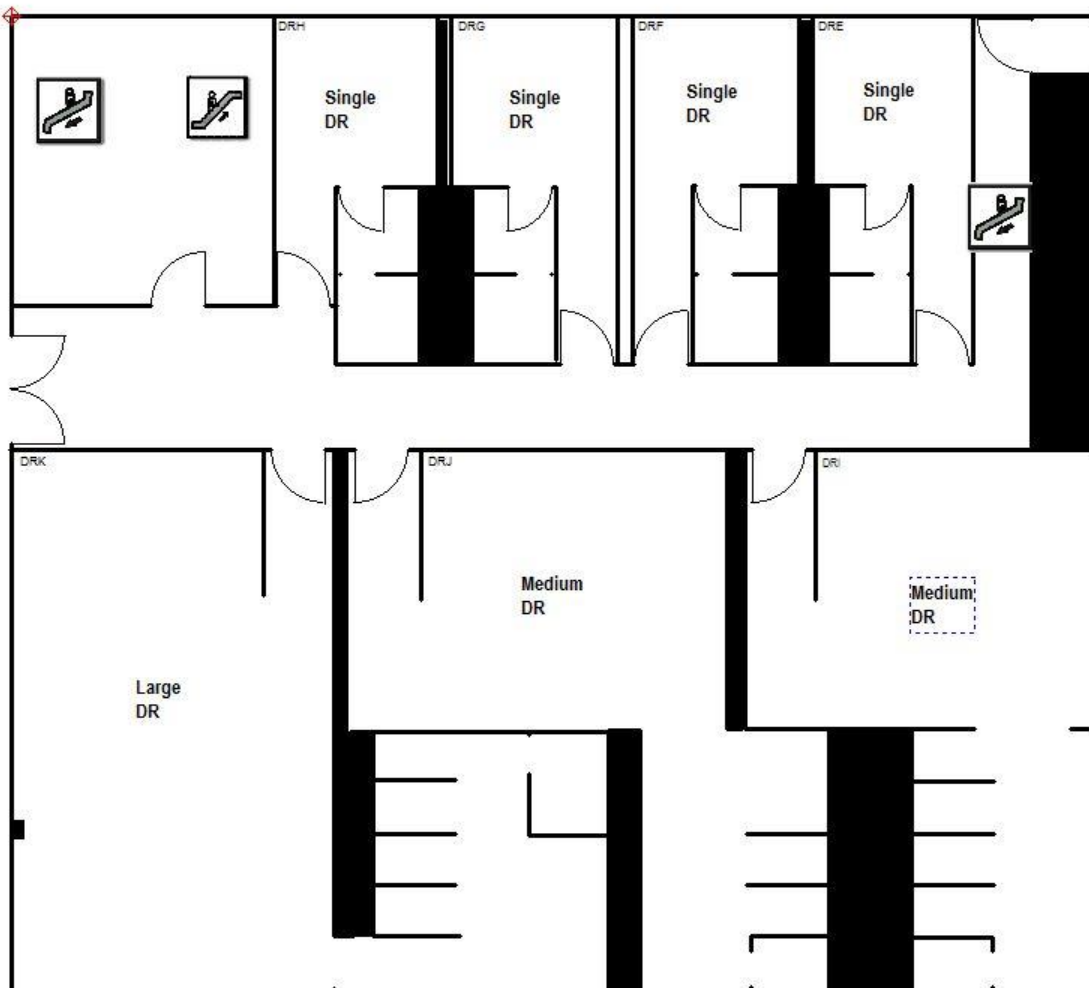
## **DRESSING ROOMS**

Upper level SL: 1 Large, 2 Medium, & 4 Small (all with toilets and showers)

Lower level SL: (available only by special permission when no events are in Coliseum)

2 Large Locker Rooms / 2 Small (toilets and showers)

All dressing rooms hall has Live (Unrecorded) monitors fed from touring sound console if needed, this can be tied in SL.



**Diagram of the Auditorium Dressing Room Area**

## **STAGE LIGHTING .**

See lighting plan:

Lighting Control: ETC Element 2 w/ 60 faders capable of channel mode or submaster mode.

Lighting Positions include, Ceiling Cove (AP) (40 circuits), 2 box booms (10 circuits each), 5 Motorized Electric Battens (35 circuits each), 5 Drop Downs SL & SR (6 Circuits each) 15 Floor packets (4 circuits each), 2 Wall Boxes (4 circuits each).

Please note there is NO FOH hand position for lighting

Dimmer & House Lighting Inventory available on request. We are a conventional house, with a few LED wash instruments available, we do not have moving lights.

## **Follow Spots:**

Four 2000 W. Xenon Super Troupers. House option of no more than 4 spots in the booth. (Gel available upon request)

## **Additional Show Power:**

2 – 600 amp (3 phase)

Bare Ends or 6 – 0 Camlock

Down Stage Left

1 – 200amp (3 phase)

Cam lock (Only) – isolated Ground

Down Stage Right – SOUND power

\*Please inform Production if you have reversed Ground and Neutral

## **Audio: PA Array system – Maxes out at 95 dB**

Vertek 4887 Line Array System

Crown Micro Tech Amps

Speaker Array:

2 top subs / 8 full range speakers per side, tuned and aimed to fill entire house area.

– Flown out of sight line in front of Proscenium.

In addition:

4 – Front fill speakers can be set on request

6 – (Unmatched) stage (performer) monitors, that can be set on request.

**The Drive Rack for this system is tuned and locked by JBL. NO MODIFACATION of the system and its components is allowed in any way.**

## **Backstage Communication**

Clear Com two (2) channel wired headset system in place. HME wireless headset system available and will interface with Clear Com system.

## **Crew Rates:**

Up Riggers                    \$37.00 per hour 4 hour minimum

Down Riggers                \$37.00 per hour 4 hour minimum

Crew Chief                    \$22.50 per hour

Runner (s) Please check rates with Venue, vehicle rental maybe needed for your event

Stagehands: \$17.00 per hour 2-hour minimum

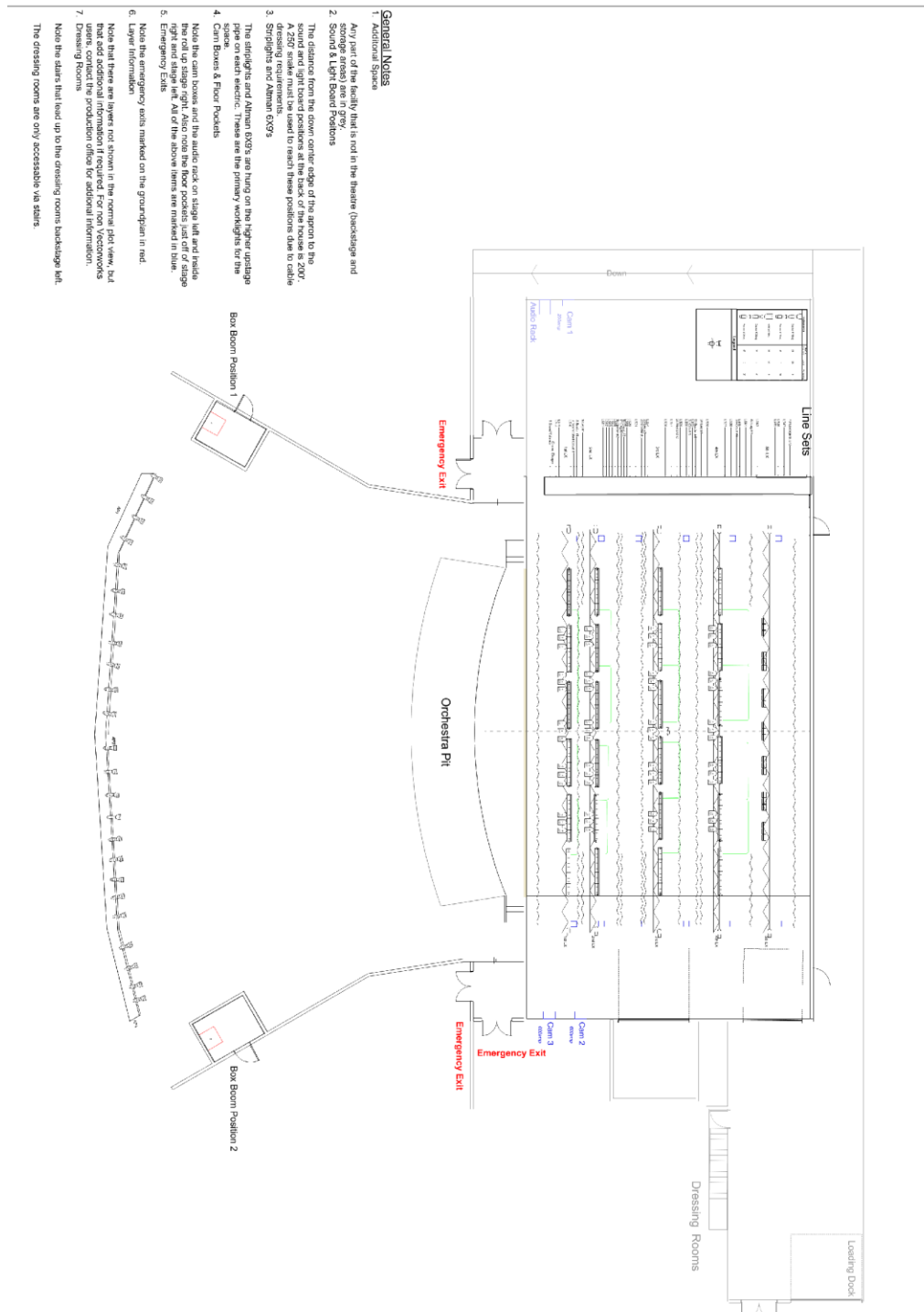
Crew Lead /Dept. Heads \$19.00 2 Hr. minimum

All labor calls that extend over 8 hours in a 24-hour day will be billed out at an overtime rate of time and a half.

Full time production staff may change shifts between load in and show.

## Stage Layout

**Included in the "Attachments" section of this PDF you will find an interactive version of this diagram allowing you to focus in on details and access the "Vectorworks" features. You must have Vectorworks loaded on your device to access these extra features, but it is not necessary to view the details of the standard diagram attachment.**



## Auditorium Line Set

Lineset	Distance From		Stg. Wgt. Size	House Hang	House Goods Weight	Max Capacity
	Grand	Fire Curtain				
<b>1</b>	-4	3"	30 lbs	Grand Valance Grand Drape	240 lbs	620 lbs
<b>2</b>	0"	7"	Isolated			N/A
<b>3</b>	2' 0"	2' 6"	20 lbs			620 lbs
<b>4</b>	2' 6"	3' 0"	20 lbs			620 lbs
<b>5 1st Elec</b>	<b>DS: 3' 0" US: 4' 0"</b>	<b>DS: 3' 6" US: 4' 6"</b>	<b>N/A</b>	<b>1st Motorized Electric</b>	<b>N/A</b>	<b>2500 lbs</b>
<b>6</b>	4' 6"	5' 0"	20 lbs	Orch Shell Cloud 1 1st Border  1st Leg	450 lbs 140 lbs 160 lbs	620 lbs
<b>7</b>	5' 0"	5' 6"	20 lbs			620 lbs
<b>8</b>	5' 6"	6' 0"	20 lbs			620 lbs
<b>9</b>	6' 6"	7' 0"	20lbs			620 lbs
<b>10 2nd Elec</b>	<b>DS: 8' 0" US: 9' 0"</b>	<b>DS: 8' 6" US: 9' 6"</b>	<b>N/A</b>	<b>2nd Motorized Electric</b>	<b>N/A</b>	<b>2500 lbs</b>
<b>11</b>	10' 0"	10' 6"	20 lbs			620 lbs
<b>12</b>	10' 6"	11' 0"	20 lbs			620 lbs
<b>13</b>	11' 0"	11' 6"	20 lbs			620 lbs
<b>14</b>	11' 6"	12' 0"	20 lbs			620 lbs
<b>15</b>	12' 0"	12' 6"	20 lbs			620 lbs

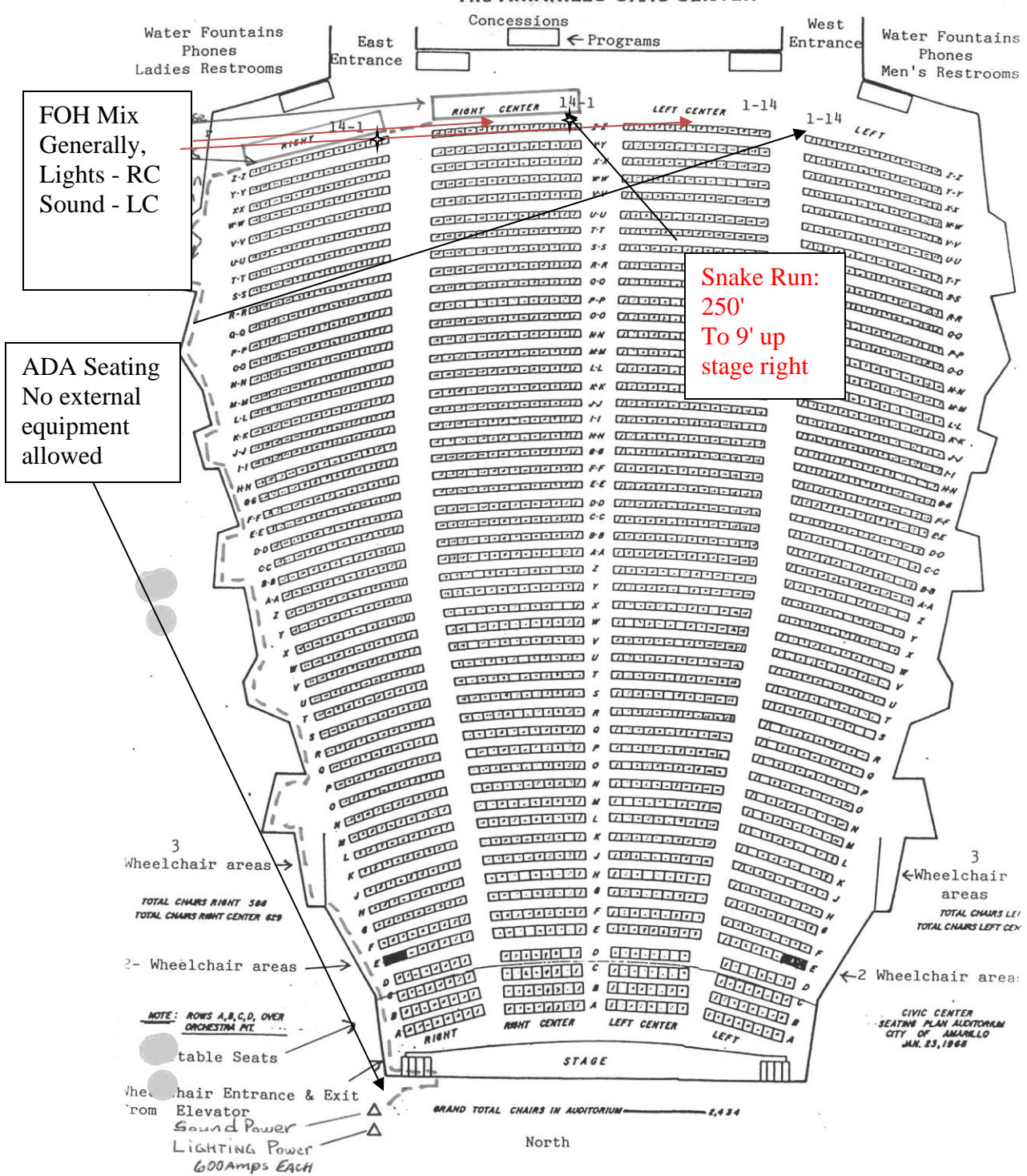
<b>16</b>	12' 6"	13' 0"	20 lbs	2nd Border 2nd Leg Orch Shell Cloud 2	140 lbs	620 lbs		
<b>17</b>	13' 0"	13' 6"	20 lbs		160 lbs	620 lbs		
<b>18</b>	13' 6"	14' 0"	30 lbs		820 lbs	1300 lbs		
<b>19</b>	14' 0"	14' 6"	20 lbs			620 lbs		
<b>20</b>	14' 6"	15' 0"	20 lbs			620 lbs		
<b>21</b>	15' 6"	16' 0"	20 lbs					
<b>22</b>	16' 6"	17' 0"	20 lbs		3rd Border	140	620lbs	
<b>23</b>	17' 0"	17' 6"	20 lbs	3rd Leg	160	620 lbs		
<b>24</b>	17' 6"	18' 0"	20 lbs					
<b>25</b> 3rd Elec	<b>DS: 18'</b> <b>6"</b> <b>US: 19'</b> <b>6"</b>	<b>DS: 19'</b> <b>0"</b> <b>US: 20'</b> <b>0"</b>	<b>N/A</b>	<b>3rd Motorized Electric</b>	<b>N/A</b>	<b>2500 lbs</b>		
<b>26</b>	20' 6"	21' 0"	30 lbs	Mid Stage Traveler	Curtain: 330lbs Track: 240lbs	1300lbs		
<b>27</b>	21' 6"	22' 0"	30 lbs			1300 lbs		
<b>28</b>	22' 6"	23' 0"	30 lbs			1300 lbs		
<b>29</b>	23' 0"	23' 6"	20 lbs			620 lbs		
<b>30</b>	24' 0"	24' 6"	20 lbs					
<b>31</b>	24' 6"	25' 0"	30 lbs			Orch Shell Cloud 3	720 lbs	1300 lbs
<b>32</b>	25' 0"	25' 6"	20 lbs					
<b>33</b>	25' 6"	26' 0"	20 lbs	4th Border	140 lbs	620 lbs		
<b>34</b>	26' 6"	27' 0"	30 lbs	4th Leg	160 lbs	1300 lbs		



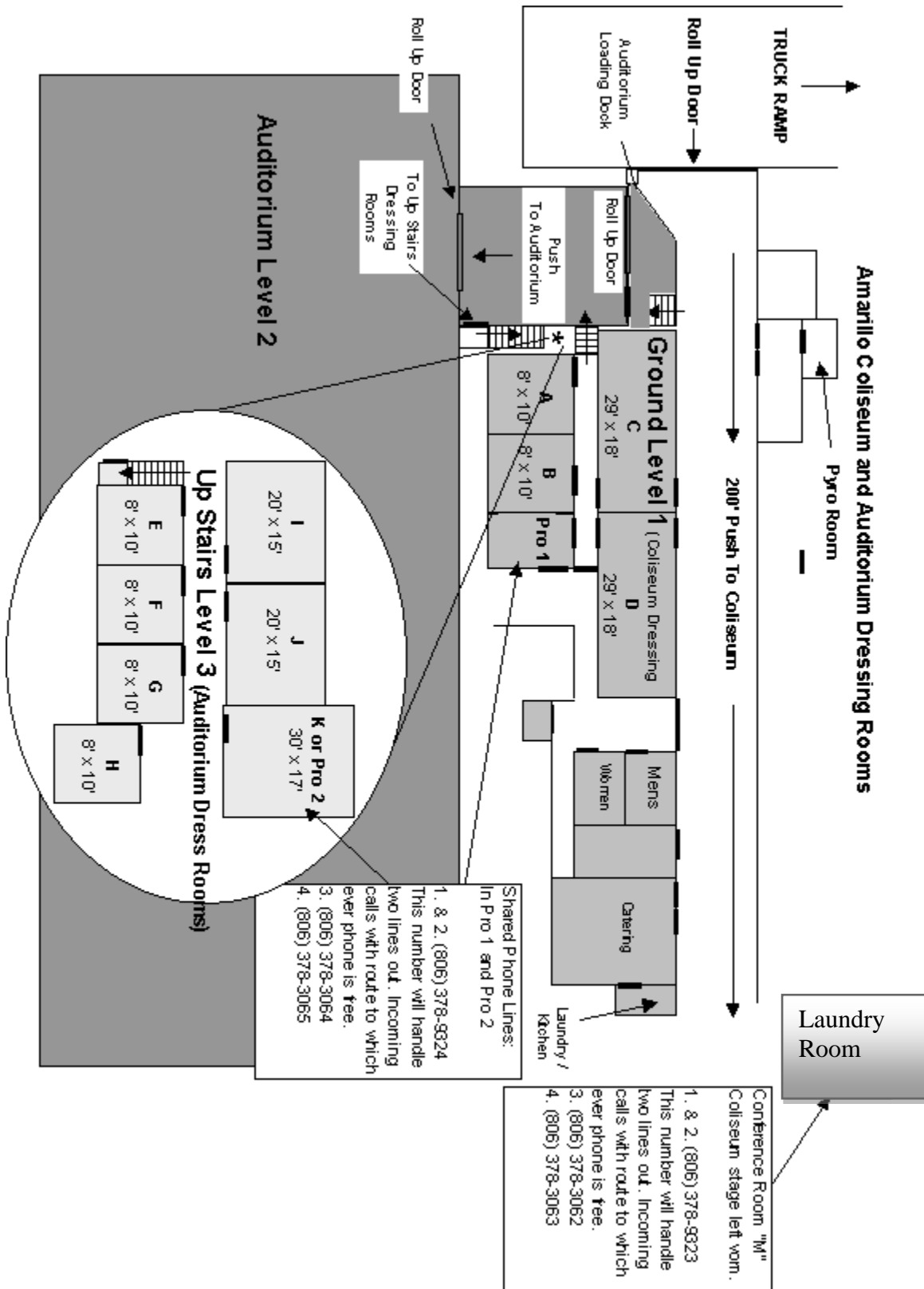
<b>35</b>	27' 6"	28' 0"	20 lbs			
<b>Lineset</b>	<b>Distance From</b>		<b>Stg. Wgt. Size</b>	<b>House Hang</b>	<b>House Goods Weight</b>	<b>Max Capacity</b>
	<b>Grand</b>	<b>Fire Curtain</b>				
<b>36</b> <b>4th</b> <b>Elec</b>	DS: 28' 6" US: 29' 6"	DS: 29' 0" US: 30' 0"	<b>N/A</b>	<b>4th Motorized Electric</b>	<b>N/A</b>	<b>2500 lbs</b>
<b>37</b>	30' 6"	31' 0"	30 lbs	Orch Shell Cloud 4  5th Leg	330 lbs	1300 lbs
<b>38</b>	31' 6"	32' 0"	30 lbs			
<b>39</b>	32' 6"	33' 0"	30 lbs			
<b>40</b>	33' 0"	33' 6"	20 lbs			
<b>41</b>	34' 0"	34' 6"	20 lbs			
<b>42</b>	35' 0"	35' 6"	20 lbs			
<b>43</b>	36' 0"	36' 0"	50 lbs			
<b>44</b> <b>5th</b> <b>Elec</b>	<b>37' 2"</b>	<b>37' 8"</b>	<b>N/A</b>	<b>5th Motorized Electric</b>	<b>N/A</b>	<b>2500 lbs</b>
	<b>Single Baton</b>					
<b>45</b>	39' 0"	39' 6"	20 lbs	US Full Black	660 lbs	Db1 Purchase
<b>46</b>	39' 6"	40' 0"	50 lbs			Db1 Purchase
<b>47</b>	40' 6"	41' 0"	50 lbs			Db1 Purchase

48	41' 6"	42' 0"	50 lbs	Vinyl Cyc	300 lbs	DbI Purchase
----	--------	--------	--------	-----------	---------	--------------

# House Floor Plan



# Dressing Rooms



For Additional Information Contact:

Derek Hisek  
Production Manager  
806-378-3088

[Derek.Hisek@amarillo.gov](mailto:Derek.Hisek@amarillo.gov)

William Weatherholt  
Asst. Production Manager  
806-378-9346

[willian.weatherholt@amarillo.gov](mailto:willian.weatherholt@amarillo.gov)

Cameron Cockrell  
Asst. Production Manager  
806-378-4211

[Cameron.cockrell@amarillo.gov](mailto:Cameron.cockrell@amarillo.gov)