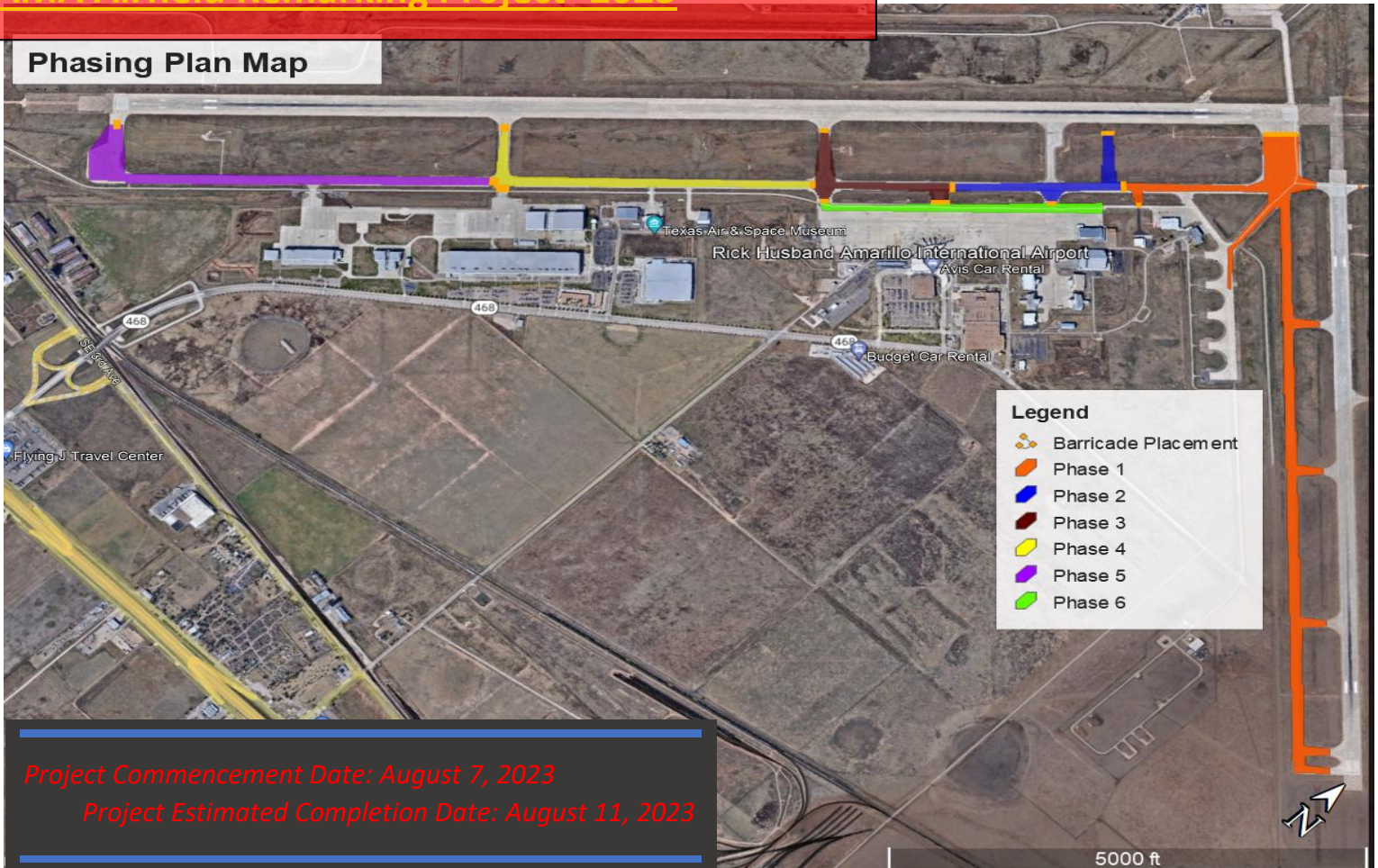


AMA Airfield Remarking Project- 2023

Phasing Plan Map



Project Commencement Date: August 7, 2023
Project Estimated Completion Date: August 11, 2023

Project Summary:

AMA will be conducting an airfield-wide remarking project to ensure the airport’s markings remain in compliance with FAA standards. The project contractor selected is Hi-Lite Airfield Services LLC. The project will consist of both marking cleaning, and subsequent repainting. All of the repainting work is set to take place at night; thus, the appropriate surfaces will be closed at night as each phase of the project is completed. All airfield surfaces will then be inspected and reopened for daytime operations, each morning, unless an unsafe condition exists.

This project will only consist of taxiway remarking, the runways will be remarked outside of this contract. Airport management will ensure that: contractors are escorted on property at all times, construction barricades are appropriately placed, and that NOTAMS are issued as needed. Please refer to the project phasing plan for phasing details.

Project Phasing Plan:

Phasing Plan as of 7/31/2023	Relevant NOTAMs	Markings
<p>Phase 1 August 7th -August 8th</p> <p>*See associated timeframes below</p>	<p>!AMA XX/XXX AMA RWY 13/31 CLSD !AMA XX/XXX AMA K, K1, K2, K3, K4, K5, K6 CLSD !AMA XX/XXX AMA TWY P5, P NORTH HOLD PAD, TWY P BTN TWY P4 AND TWY P5 CLSD</p>	<p>TWY K, K1, K2, K3, K4, K5, K6 TWY P5 TWY P BTN P4 & P5 Centerlines, Edge Lines, Enhanced Centerline, RWY Hold Position Marking, SPHPS *New East Ramp RWY 13 Hold Position Marking* TWY P NORTH HOLD PAD Intermediate Boundary Marking</p> <p>TWY D TWY E up to Alert Pad 2 Flt Mechanics TWY Non-Mvt Area Boundary Markings *All markings cleaned via water blasting prior to painting</p>
<p>Phase 2 August 9th</p> <p>*See associated timeframes below</p>	<p>!AMA XX/XXX AMA TWY P4, TWY P BTN P4 AND TWY J, TWY C CLSD</p>	<p>TWY P4 TWY P BTN P4 and J TWY C Centerlines, Edge Lines, Enhanced Centerline, RWY Hold Short Position Marking, SPHPS, Non-Mvt Area Boundary Markings *All markings cleaned via water blasting prior to painting</p>
<p>Phase 3 August 9th</p> <p>*See associated timeframes below</p>	<p>!AMA XX/XXX AMA TWY P3, TWY P BTN TWY J AND TWY P3, TWY J CLSD</p>	<p>TWY P3 TWY P BTN TWY J AND TWY P3 TWY J Centerlines, Edge Lines, Enhanced Centerline, RWY Hold Short Position Marking, SPHPS, Non-Mvt Area Boundary Markings *All markings cleaned via water blasting prior to painting</p>
<p>Phase 4 August 9th</p> <p>*See associated timeframes below</p>	<p>!AMA XX/XXX AMA TWY P2, TWY P BTN TWY P2 AND TWY P3 CLSD</p>	<p>TWY P2 TWY P BTN TWY P2 AND TWY P3 Centerlines, Edge Lines, Enhanced Centerline, RWY Hold Short Position Marking, SPHPS *All markings cleaned via water blasting prior to painting</p>
<p>Phase 5 August 10th</p> <p>*See associated timeframes below</p>	<p>!AMA XX/XXX AMA TWY P1, P SOUTH HOLD PAD, TWY P BTN TWY P1 AND TWY P2 CLSD</p>	<p>TWY P1 TWY P BTN TWY P2 AND TWY P1 Centerlines, Edge Lines, Enhanced Centerline, RWY Hold Position Marking, SPHPS</p> <p>TWY P SOUTH HOLD PAD Intermediate Boundary Marking *All markings cleaned via water blasting prior to painting</p>
<p>*Phase 6 August 10th</p> <p>*See associated timeframes below</p>	<p>!AMA XX/XXX AMA APRON TERMINAL RAMP WIP SFC PAINTING</p>	<p>APRON TAXILANE Centerlines, Edge Lines</p> <p>*All markings cleaned via water blasting prior to painting</p>

Associated Timeframes

- ❖ Daily Marking Cleaning: 8:00am- 8:00pm | Monday- Thursday
 - *Cleaning is not restricted to the phase's designated painting surfaces
- ❖ Daily Painting: 8:00pm- 9:00am | Monday- Thursday (Into Friday Morning)
 - *9:00am- 10:00am will be for cleanup and equipment removal
- ❖ Daily NOTAM Closure: 7:00pm- 11:00am | Monday- Thursday (Into Friday Morning)

Daily Project Tasks

1. Daily marking cleaning, under airport escort during daytime
 2. NOTAM closures are issued by Airport Operations
 3. Daily night closures begin, along with airport escorts
 4. Barricades are placed by Airport Maintenance
 5. Night work ensues
 6. Surfaces are inspected and reopened for daytime operations by Airport Operations
 7. Barricades are removed by Airport Maintenance
- *Repeated until Project Completion*

Concurrent Projects

- ❖ AMA RWY 4 Glideslope Access Road Project
 - July 24, 2023 - August 4, 2023
 - ***Estimated date of completion, should be no conflict***
 - [Click here for details](#)

Notes:

1. No Sunday work allowable.
2. Contractor work shall be limited to the agreed upon Production/Staffing schedule.
3. Should the contractor complete a phase earlier than anticipated, the contractor shall request a phase transition.
4. AMA shall conduct an acceptance inspection prior to a scheduled phase transition (Allow 1 hr for inspection and barricade movement). All work within the phase shall be accomplished prior to the commencement of the acceptance inspection.
5. Contractor shall have a superintendent or designee onsite while work is occurring on the airfield.
6. Kickoff/Safety briefing required prior to the start of the project or the addition of a new superintendent or designee.
7. AMA staff can call for a work stoppage for identified safety conditions or non-conformities to FAA standards.
8. Enhanced Taxiway Centerline, Hold Shorts, & White SPHPS to be Type 3 Beads; All other markings with the exception of non-reflective black to be Type 1 Beads.

9. The project staging area for airfield painting equipment will be Alert Pad 2
10. Waterway/Debris drop will be at Alert Pad 1 by the airstairs.
11. Hi-Lite personnel will be provided a two-way radio for better communication during daytime marking cleaning.