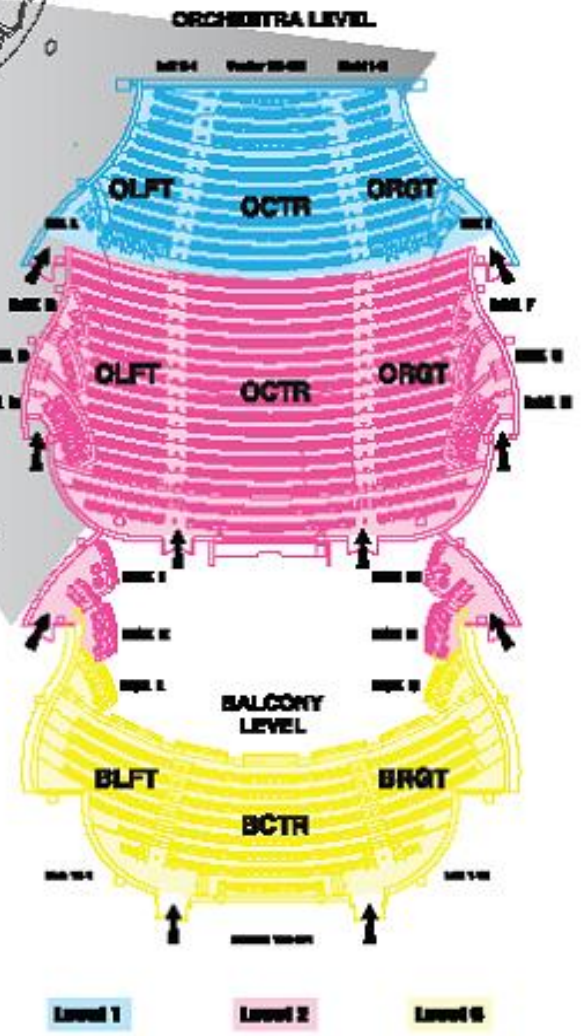
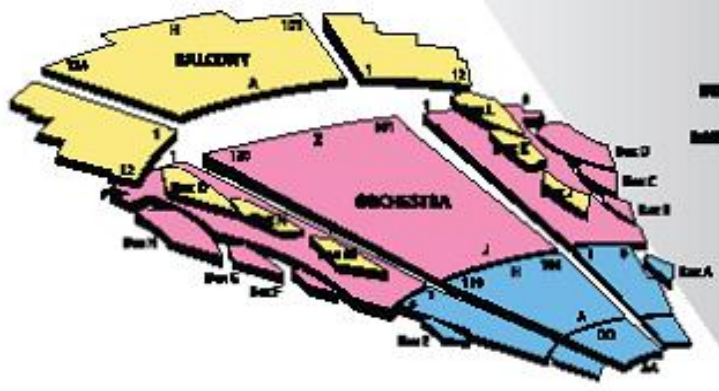
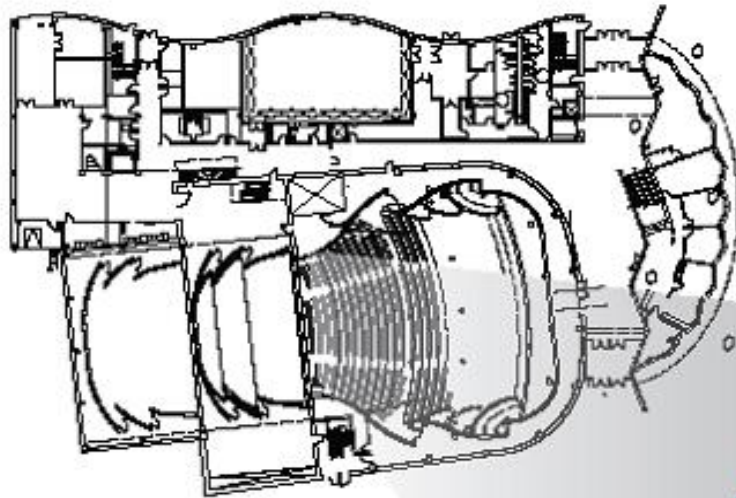




# AMARILLO Civic Center COMPLEX®

*Meet. Play. Celebrate.*

*GLOBE-NEWS CENTER*  
*for the Performing Arts*





**GLOBE-NEWS CENTER**  
*for the Performing Arts*

**500 South Buchanan  
Amarillo, TX. 79101**



**THE GLOBE NEWS CENTER FOR THE PERFORMING ARTS  
HOUSES A 1314 SEAT AUDITORIUM WITH BALCONY,  
REHEARSAL/EDUCATION ROOM, SPACIOUS MULTI-LEVEL  
LOBBY, AND NUMEROUS DRESSING ROOMS. IT IS  
DESIGNED WITH ACOUSTICAL EXCELLENCE IN MIND AND  
SERVES AS A LANDMARK FOR THE ARTS SCENE IN  
AMARILLO.**

**IT IS EQUIPPED WITH A ONE-OF-A-KIND ONE-PIECE  
ORCHESTRA SHELL, RETRACTING INTO AN UPSTAGE  
GARAGE AREA TO REVEAL A FULLY EQUIPPED  
ROADHOUSE. FEATURING A SPRUNG DANCE FLOOR,  
SCREW-DRIVE ORCHESTRA PIT, COMPLETE FLY SYSTEM  
AND AVAILABLE LIGHTING AND AUDIO PACKAGES, THE  
CENTER IS EQUIPPED TO HOST EVENTS FROM THE  
SMALLEST MEETING TO A LARGE ROAD SHOW. IT SERVES  
AS THE PERFORMANCE HOME FOR THE AMARILLO  
SYMPHONY, AMARILLO OPERA, AND LONE STAR BALLET.  
THE FACILITY IS OPERATED AND MANAGED AS PART OF  
THE AMARILLO CIVIC CENTER COMPLEX.**

## Technical Specifications

Revised June 15, 2017

### Load-in Area

The loading dock is a truck height loading dock with dock leveler available. It is located adjacent to Pierce Street (one-way southbound). When headed southbound on Pierce Street, pull onto 5<sup>th</sup> Street, just past the building and back into the dock area. There is room for only one truck at a time at this dock. An alternate street level load-in overhead door for smaller items is available on the northwest corner of the building. This opens into a small garage area with access to the backstage dock through a double doorway approximately 84" h x 71" w.

Loading Dock Door dimensions – 10'x10' – Ceiling clearance is 9 feet

Push to stage – 53' with one turn to the right

Hallway vertical clearance – 8' 9" (pipes hanging lower than door height)

Hallway width – 16'

Stage Door dimensions – 10'x10'

Soundproof stage door located on Upstage Left back wall.

### Stage Dimensions

Curved Proscenium arch – 50' wide at stage level, 32' high at CL

Stage width 50' + wings = 106"

Stage depth 38'

Wing Space – 30' Stage Left, 26' Stage Right

Offstage vertical height to second floor pin-rails - 37' 0"

### ***Stage Floor Surface***

***Any and all fastening to the stage deck must be approved in advance and in writing by Civic Center Management.***

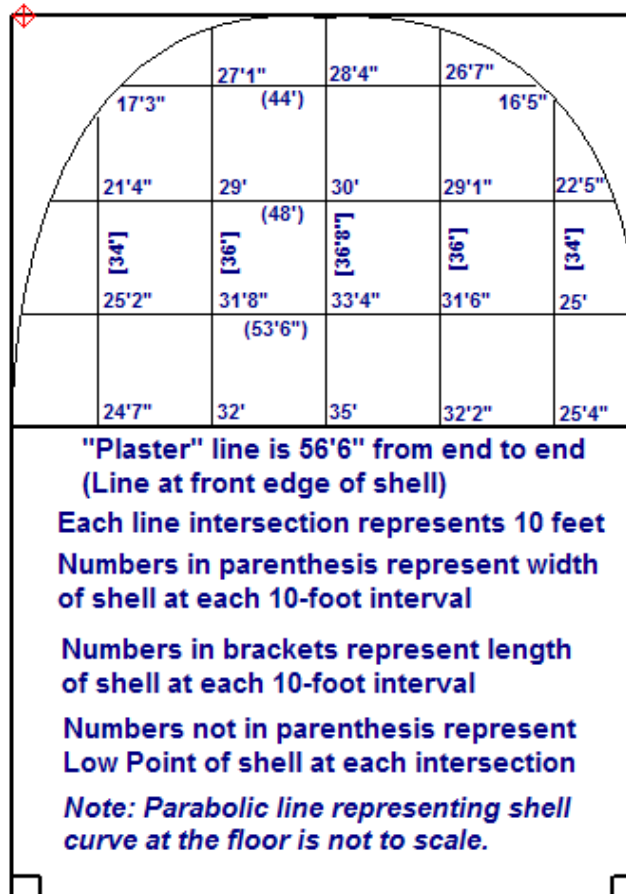
### **Absolutley NO LAGGING ALLOWED.**

Stage floor is a sprung dance floor constructed with rubber supports topped with two layers of ¾ " plywood and surfaced with a layer of 1/4" hardboard (masonite). Color is black. Surface is consistent from wall-to-wall.

Client will be responsible for any floor damage or repainting if necessary after use. Permission must be obtained from facility technical management prior to lagging into or painting the floor.

### ***Acoustical Orchestra Shell***

A one-of-a-kind one-piece orchestra shell is housed in a garage upstage of the main stage-house. The orchestra shell plays an important role in the quality of the music. Its use links the house with the stage and creates a one room concert hall acoustically. It is recommended for most musical ensembles. When in use, it travels forward into the stage house, effectively placing the performers in the same acoustical space as the audience. If you plan on using this shell, please contact the facility Production Manger for additional information. Approximate measurements inside the shell are depicted in the graphic below.



### ***Adjustable Acoustical System***

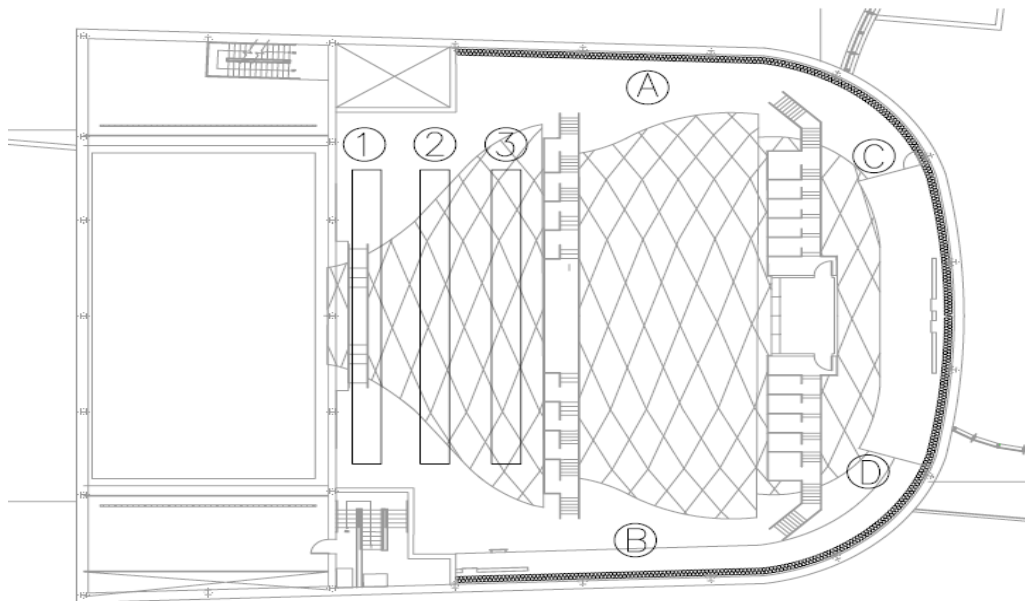
The adjustable absorption systems consist of heavy velour motorized draperies and panels or dampers located at the catwalk level in the outer volume chamber of the hall. Velour banners are typically cost effective and reliable. However, they are most efficient at mid and high frequencies above 250 Hz, with a rapid decrease at low frequencies, and little effect below 63Hz. The dampers consist of 6" thick fiberglass panels that are more efficient in the low frequency range. When the draperies and dampers are stored within their pockets, they have a negligible effect on the decay or reverberation time within the audience chamber. When they are deployed, they absorb sound proportionally to their exposed area and reduce the reverberation time of the hall. Programs requiring a "live" room with a longer reverberation time, e.g. classical music, would typically have most of the draperies and dampers stored in their pockets, while events requiring a "dry" room with a shorter reverberation time, e.g. speech or amplified, would typically have most of the systems deployed.

The following table is a quick guide for performance use of the adjustable systems. Settings for program types not listed here should resemble the most similar program. The draperies are labeled A, B, C and D and the dampers are 1, 2, and 3.

See table and map on the next page for reference locations.

Program	Draperies Deployed	Dampers Deployed
Piano Soloist – lid up	NONE	NONE
Vocal or Instrumental Soloist (with piano) – low stick	A, B	NONE
String Quartet or String Ensemble	A, B	NONE
Choral Ensemble Pop	A, B, C, D	NONE
Chorus	A, B	NONE
Symphony Orchestra (with full brass and percussion)	NONE	3
Symphony Orchestra with Strings only (chamber orchestra)	A, B	NONE
Lecture	A, B, C, D	1, 2, 3
Unamplified Jazz	A, B, C, D	1, 2, 3
Pop or Rock Band	A, B, C, D	1, 2, 3

Program	Shell Deployed	Stage Location	Pit Lift Configuration
Piano Soloist – lid up	YES	In the shell, locate piano edge 2' upstage from upstage pit lift line	Stage or Audience level
Vocal or Instrumental Soloist (with piano) – low stick	YES	In the shell, locate piano edge 3' upstage from upstage pit lift line. Singer off center	Stage or Audience level
String Quartet	YES	In the shell, first violin located 3' upstage from upstage pit lift line.	Stage or Audience level
Choral Ensemble (Sweet Adelines)	YES	On choral risers in the shell. Podium located 2' upstage from the upstage pit line.	Stage or Audience level
Chorus	YES	On choral risers in the shell. Podium located 2' upstage from the upstage pit line.	Stage or Audience level
Symphony Orchestra (with brass and percussion)	YES	Podium 2' upstage from the downstage pit edge	Stage Level
Symphony Orchestra with Strings only (chamber orchestra)	YES	Podium 2' upstage from the downstage pit edge	Stage Level
Lecture	YES OR NO	Does not matter	Stage or Audience level
Unamplified Jazz	YES	In the shell just upstage from the pit lift	Audience level
Pop or Rock Band	NO	In stage with stage curtains	Audience level



### ***Orchestra Pit***

Screw-Drive Orchestra Pit can be raised from orchestra pit level to audience or stage level. Portable seats are available to add for additional seating when Pit is at audience level. When completely lowered, there is an additional 8' of space for orchestra members under the stage.

### ***Stage Trap System***

A stage trap system is available for use. Panel are 2'6" wide x 5' deep. Please contact facility management prior to planning use of these traps. Client is responsible for extra cost/labor for removing and replacement of trap doors.

### ***Fly System***

Counterweight system, all single purchase

59 fly lines plus 1 House Curtain line

Grid Height – 81' 10"

Low trim – 4' 0"

High trim – 77' 0"

Locking rail located SR at Stage Floor Level

Belaying pin-rails located 10' off stage at approximately 40' high for cable picks

Baton weight maximum of 700 lbs.

### ***Power Connections***

Audio power throughout the building is all tied to the same transformer and isolated ground. Any orange colored plugs in the building are on this transformer and ground.

Audio Company Switch:

One 200 Amp 3 Phase with Isolated Ground Upstage Left (bare lug)

One 60 Amp 3 Phase with Isolated Ground Down Stage Left with distro box

One 60 Amp 3 Phase with Isolated Ground Down Stage Right with distro box

Lighting/Motor Company Switches

Two – 400 Amp 3 Phase Switches on Stage Left Wall (Cam-lock connectors)

### ***Headset/Paging System***

The Center features a four-channel Clear-Com headset system with stations liberally spaced throughout the facility. Paging to lobby, backstage and dressing rooms is available from the Stage Manager position, as well as other locations in the facility.

### ***Follow Spots***

Two (2) Lycian 2500 watt Superstar Long Throw spots are located at the apex of the rear catwalk in an enclosed spot booth. The spot booth is 85' from the front of the stage, and is at a 40 degree incline. Spots are available at an extra charge. No other matching follow spots are available in the facility. If your production requires additional spots, please discuss this with the facility Production Manager at least two weeks prior to your move-in.

### ***Lighting System***

A basic hang plot has been established for the Globe-News Center and is available for client's use. Any changes or additions to this basic plot are the client's responsibility and the basic hang must be restored as part of the move-out. A list of equipment can be found on the last page of this document. Lighting diagrams and hang plot are available by request. Lighting equipment inventory can be provide if needed.

- ETC Sensor system with stage pin connectors on three house catwalks and various other locations throughout the theatre.
- Onstage electrics powered from the grid using 150' Socapex cables with stage pin fan-outs.
- ETC Net2 throughout the facility with 2-port DMX control nodes.
- ETC Ion control board with remote video node and wireless remote focus units can be connected via closed Wi-Fi system.

### ***Audio System***

A complete in-house audio system is available. Control is from the audio control booth or a front of house mix location in the seating area. This position is below a balcony with tuned under fill speakers. Any use of this mix position requires the removal of seats. The booth has proven not to be a good location for mixing. If using the FOH location, please inform production and box office management prior to opening of ticket sales.

A complete listing of audio equipment available can be found beginning on page seven of this document.

### ***Dressing Rooms***

All dressing rooms are equipped with lighted individual make-up mirrors and lavatories with hot and cold water.

Three small "headliner" dressing rooms designed for 1 or 2 people each are located at stage level across the hallway off stage left. One dressing room has its own restroom, with the other two dressing rooms sharing their own restroom. An additional "quick change" room is also located next to the headliner dressing rooms with no toilet facilities. All showers are located on the second floor.

Five large dressing rooms are located on the second floor, accessible from stage level by a stage left stairway or backstage service elevator. Second floor Dressing room area includes the following:

- 4 Dressing rooms designed to comfortably serve 10 to 12 people each
- 1 Dressing room designed to comfortably serve up to 50 people
- 5 individual Shower rooms and Men's and Women's Rest Rooms located adjacent to the dressing rooms by a common hallway.

### ***Wardrobe Area***

A wardrobe workroom is located on the second floor, adjacent to the dressing rooms. It includes extra circuiting for irons and steamers, as well as washer and dryer hookups and a laundry sink. It is accessible by backstage service elevator.

## Shore Power

One 100-amp 220V power supply located just inside loading dock door.

## Tour Office

A small office is available for use adjacent to the wardrobe workroom on the second floor. There is no additional charge for use of this office.

## Crew Rates

- Production Manager/ Steward at \$18.50 per hour
- All Stagehands are billed at \$14.50 per hour (2-hour minimum call)
- A Crew Lead Charge of \$16.50 per hour (2-hour minimum call)
- Up Riggers are billed at \$25.00 per hour. (4-hour minimum on IN and OUT)
- Down Riggers are billed at \$20.00 per hour (4-hour minimum on IN and OUT)
- Runner Base Rate: \$150 per day plus expense per day for rental vehicles. If runner is using a personal vehicle price increases to \$180 per day plus expenses.

All labor calls that extend over 8 hours in a 24-hour day will be billed out at an overtime rate of time and a half.

For Additional Information Contact:

Derek Hisek  
Production Manager  
806-378-3088  
[Derek.Hisek@amarillo.gov](mailto:Derek.Hisek@amarillo.gov)

William Weatherholt  
Asst. Production Manager  
806-378-9346  
[william.weatherholt@amarillo.gov](mailto:william.weatherholt@amarillo.gov)

Daniel Meggers  
Asst. Production Manager  
806-378-4221  
[daniel.meggers@amarillo.gov](mailto:daniel.meggers@amarillo.gov)





## **Globe-News Center for the Performing Arts Audio System**

The Globe-News Center combines acoustic excellence with an outstanding Audio system. The system is a Left, Center, Right system that can be configured for most audio needs. Following is an overview of available equipment:

### Front-of-House

- Console: Soundcraft LX 7 - 32 input console
- 56 channel snake system from stage to booth with additional cable passes for supplemental runs
- 4 channel Clear-Com system
- Back stage, onstage, and lobby paging program system

### EAW Speakers

- Center cluster speakers - 2 EAW MQM 1364's and 1 MQM 1410 (4x10 low freq. See MQM1215 for similar specs) and bottom tier of MQM DF (custom wide-pattern down-fill box)
- Left and Right stacks suspended include 1 MQM 1364, 1394,1410 per side
- Subwoofers single SB250 and SB180 per side
- Under-Balcony Fills - Nine JF80 under balcony fills patchable on an individual speaker basis

### Orchestra announce speakers

- A group of EAW speakers are permanently installed for P.A. use when the large system is not desired. These provide adequate coverage for the entire house, while being out of view from the audience. This portion of the system is designed for amplification of the spoken word and limited music.

### Amplification

- Amps are all Crest CK series
- 8 channels of unassigned amplification for effects and/or onstage monitors
- Jacks located throughout house for additional use
- Speakers are all tri-amped

### Effects Processors:

- 1 Yamaha 2PX 2000
- 1 T.C. Electronic M2000
- 1 Lexicon MPX 1

### Compressors:

- 8 Channels KlarkTeknik Compressors

### Gates:

- 8 Channels KlarkTeknik Gates

### Equalization:

- 4 KlarkTeknik Dual Ch. 31 Band

### CD/Record/Playback

- 2 Tascam CDRW 2000
- 1 Tascam MD 350 Mini-Disc
- 1 Tascam CD-OIU Professional CD player

### Mix Positions

- Control Booth – Sliding window to allow sound in (not recommended)
- Rear two rows – Under balcony eliminates 12 seats (recommended mixing location)
- Rear five rows – Also under balcony eliminates 30 seats

### **GNC LINSET SCHEDULE – NEXT PAGE**

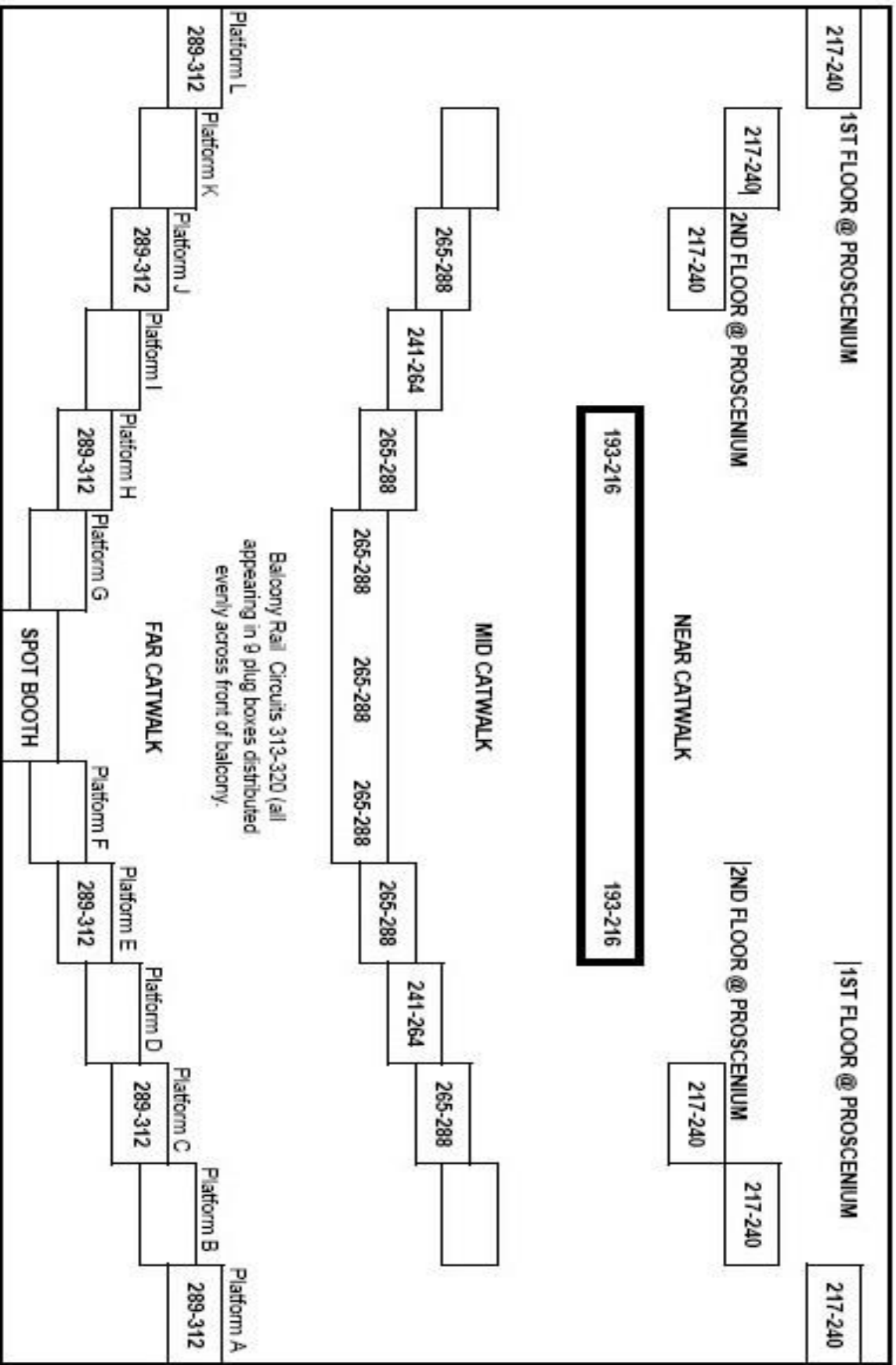


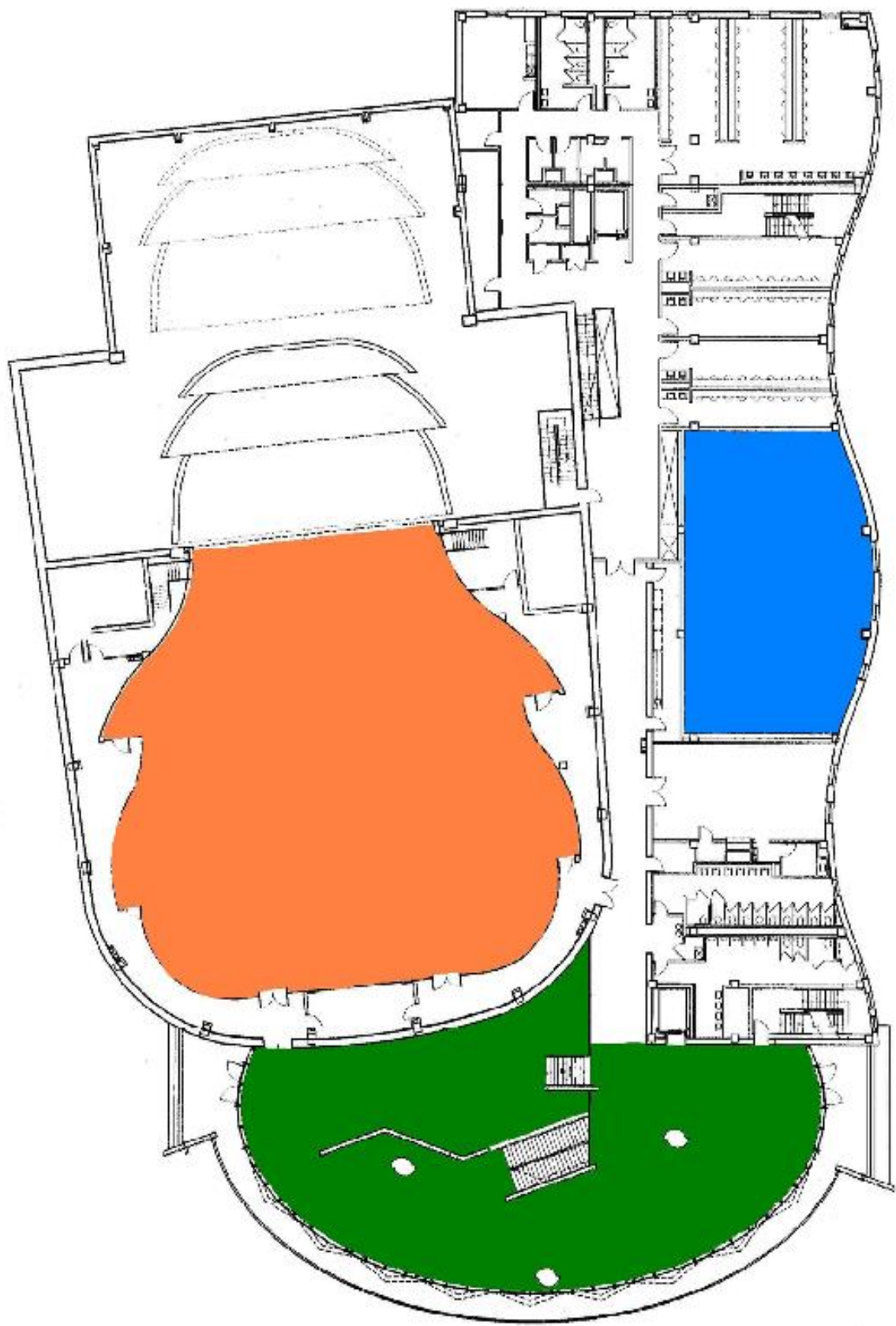
\*This lineset schedule and the light plot that accompanies this technical packet reflect the default house hang. Every client is responsible for restoring any changes made to these specifications at their own expense, or they will be billed a restore fee by Civic Amarillo. The production manager on duty will verify the house hang after load out of the event.

## Globe-News Center Lineset Schedule

Lineset Number		Feet From DS Wall	Description	Notes
Grand		1'5"	Grand Drape	
1		2'3"	Border	1st Border
2		2'9"	Legs	1st Legs
3		3'3"		
4		3'9"		
5		4'3"	1st LX	Cables
6		4'9"	1st LX	Instruments
7		5'3"		
8		6'3"		
9		7'3"	Monitor	
10		7'9"		
11		8'3"		
12		8'9"		
13		9'3"	Border	2nd Border
14		9'9"	Legs	2nd Legs
15		10'9"		
16		11'3"		
17		11'9"		
18		12'3"		
19		13'3"	2nd LX	Cables
20		13'9"	2nd LX	Instruments
21		14'9"		
22		15'3"		Trip pipe for shell use
23		16'3"	Full Black	3rd Border
24		16'9"	Legs	3rd Legs
25		17'9"		
26		18'9"		
27		19'3"		
28		19'9"		
29		20'9"	3rd LX	Cables
30		21'3"	3rd LX	Instruments
31		21'9"		
32		22'3"		

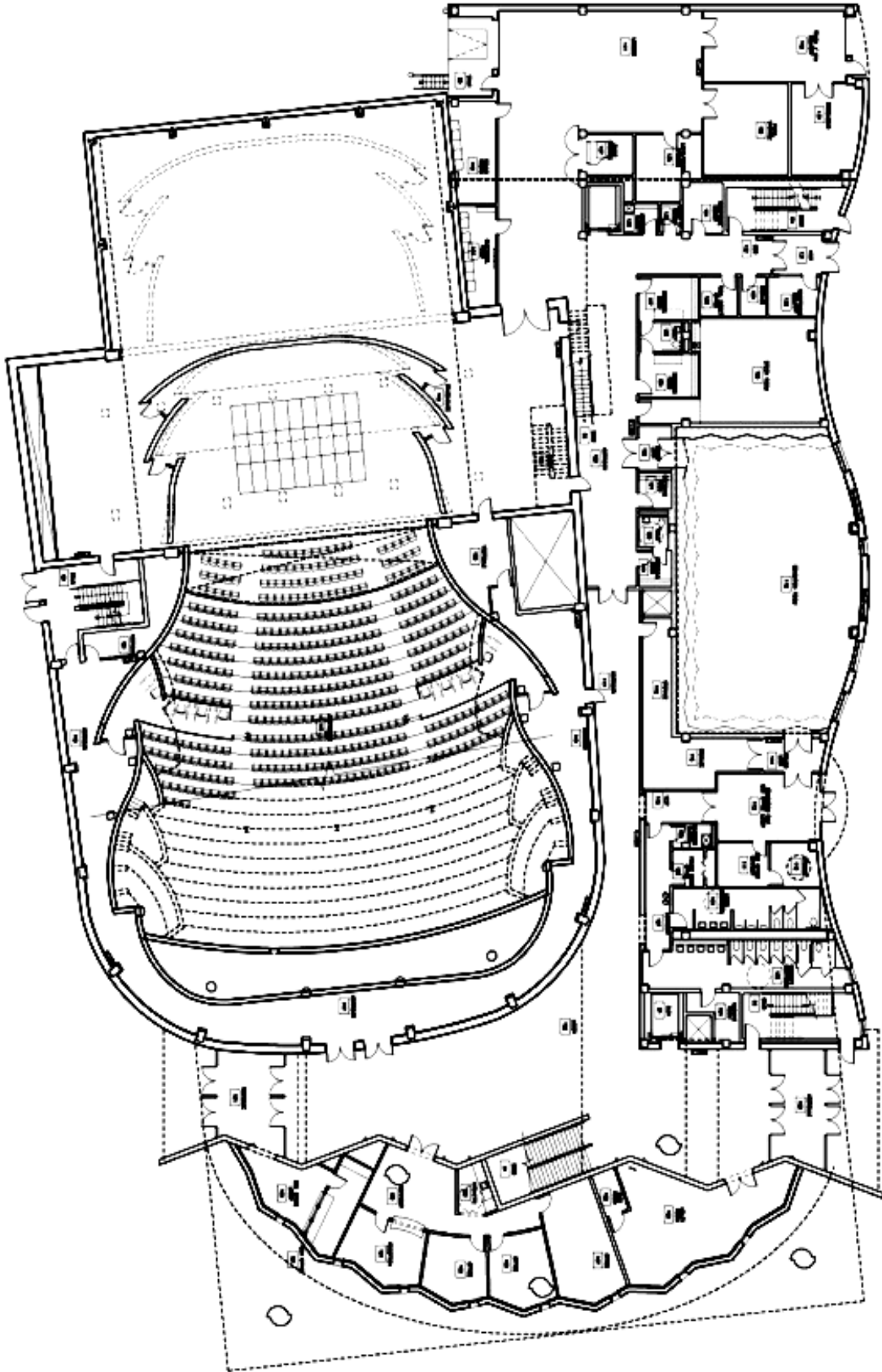
33		22'9"		
34		23'3"		
35		24'3"	Border	4th Border
36		24'9"	Legs	4th Legs
37		25'3"		
38		26'3"		
39		26'9"		
40		27'3"		
41		27'9"		
42		28'3"		
43		28'9"	4th LX	Cables
44		29'3"	4th LX	Instruments
45		29'9"		
46		30'9"	Border	5th Border
47		31'9"	Legs	5th Legs
48		32'3"	5th LX	Cables
49		33'3"	5th LX	Instruments
50		33'9"		
51		34'3"		
52		34'9"		
53		35'3"		
54		35'9"		
55		36'9"		
56		37'3"		
57		37'9"	Full Black	
58		38'3"	Cyc	
59		38'9"		Trip Pipe

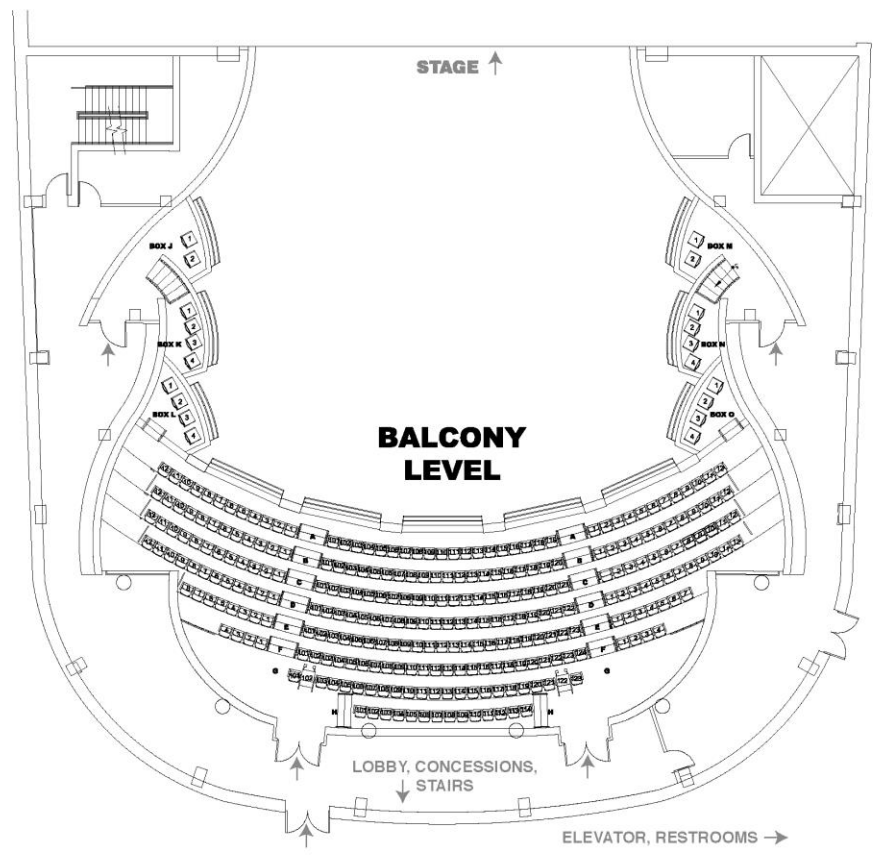
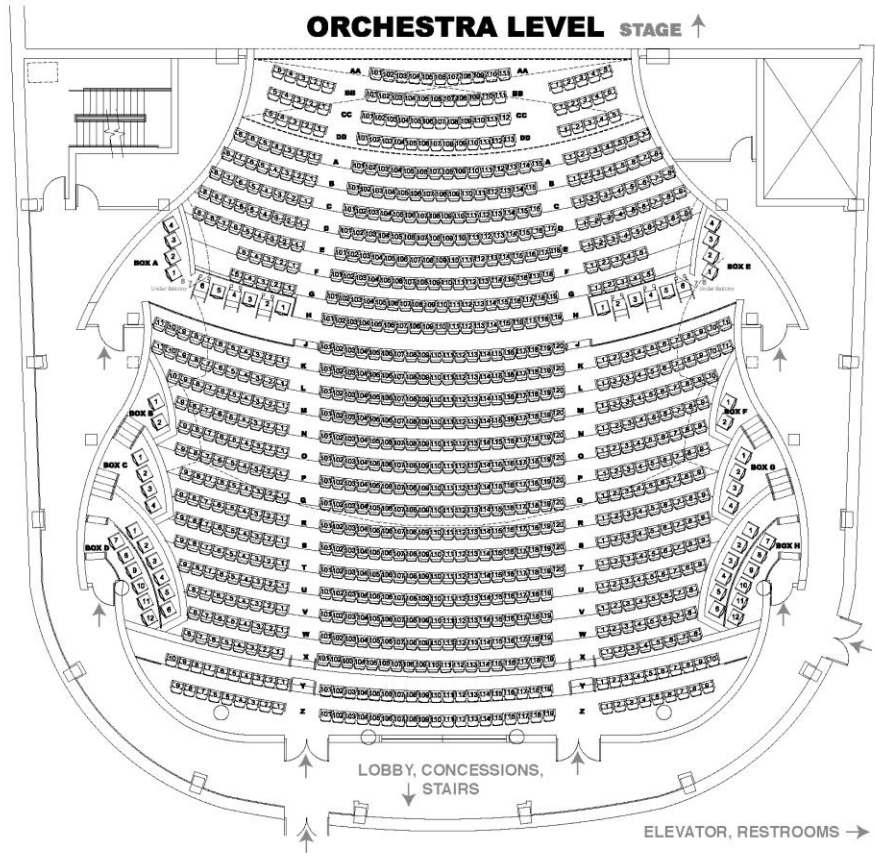




2

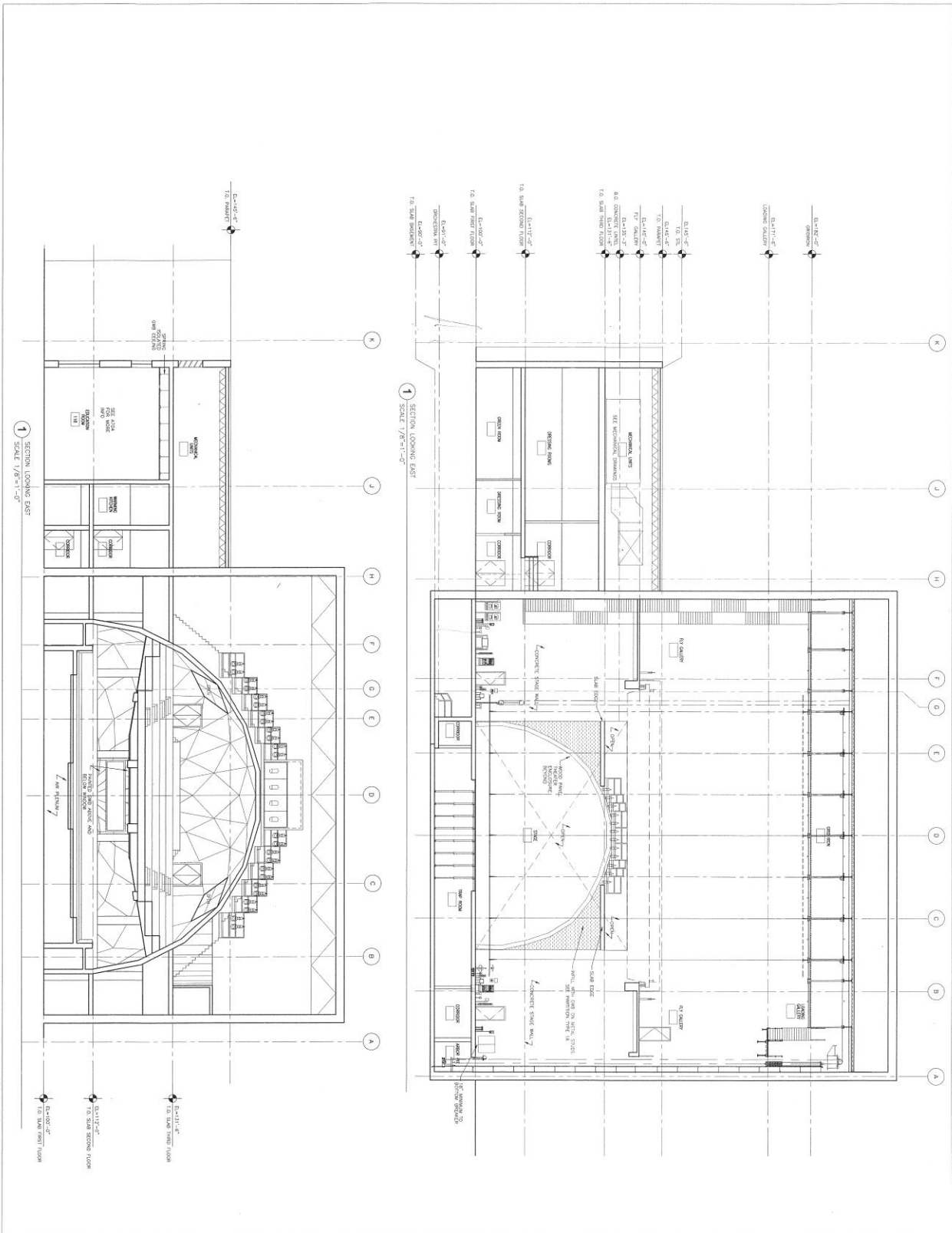
ENTRY LEVEL PLAN











**GLOBE-NEWS CENTER**  
**for the Performing Art**  
 AMARILLO, TEXAS

**HPA**  
 HUNTER PARTNERS ARCHITECTS

**ARCHITECT**  
 HUNTER PARTNERS ARCHITECTS  
 1100 WEST 10TH STREET  
 AMARILLO, TEXAS 79101  
 (806) 435-1100

**MECHANICAL ENGINEER**  
 HUNTER PARTNERS ARCHITECTS  
 1100 WEST 10TH STREET  
 AMARILLO, TEXAS 79101  
 (806) 435-1100

**ELECTRICAL ENGINEER**  
 HUNTER PARTNERS ARCHITECTS  
 1100 WEST 10TH STREET  
 AMARILLO, TEXAS 79101  
 (806) 435-1100

**PLUMBING ENGINEER**  
 HUNTER PARTNERS ARCHITECTS  
 1100 WEST 10TH STREET  
 AMARILLO, TEXAS 79101  
 (806) 435-1100

**CONSTRUCTION DOCUMENTS**  
 HUNTER PARTNERS ARCHITECTS  
 1100 WEST 10TH STREET  
 AMARILLO, TEXAS 79101  
 (806) 435-1100

**CONSTRUCTION DOCUMENTS**  
 HUNTER PARTNERS ARCHITECTS  
 1100 WEST 10TH STREET  
 AMARILLO, TEXAS 79101  
 (806) 435-1100

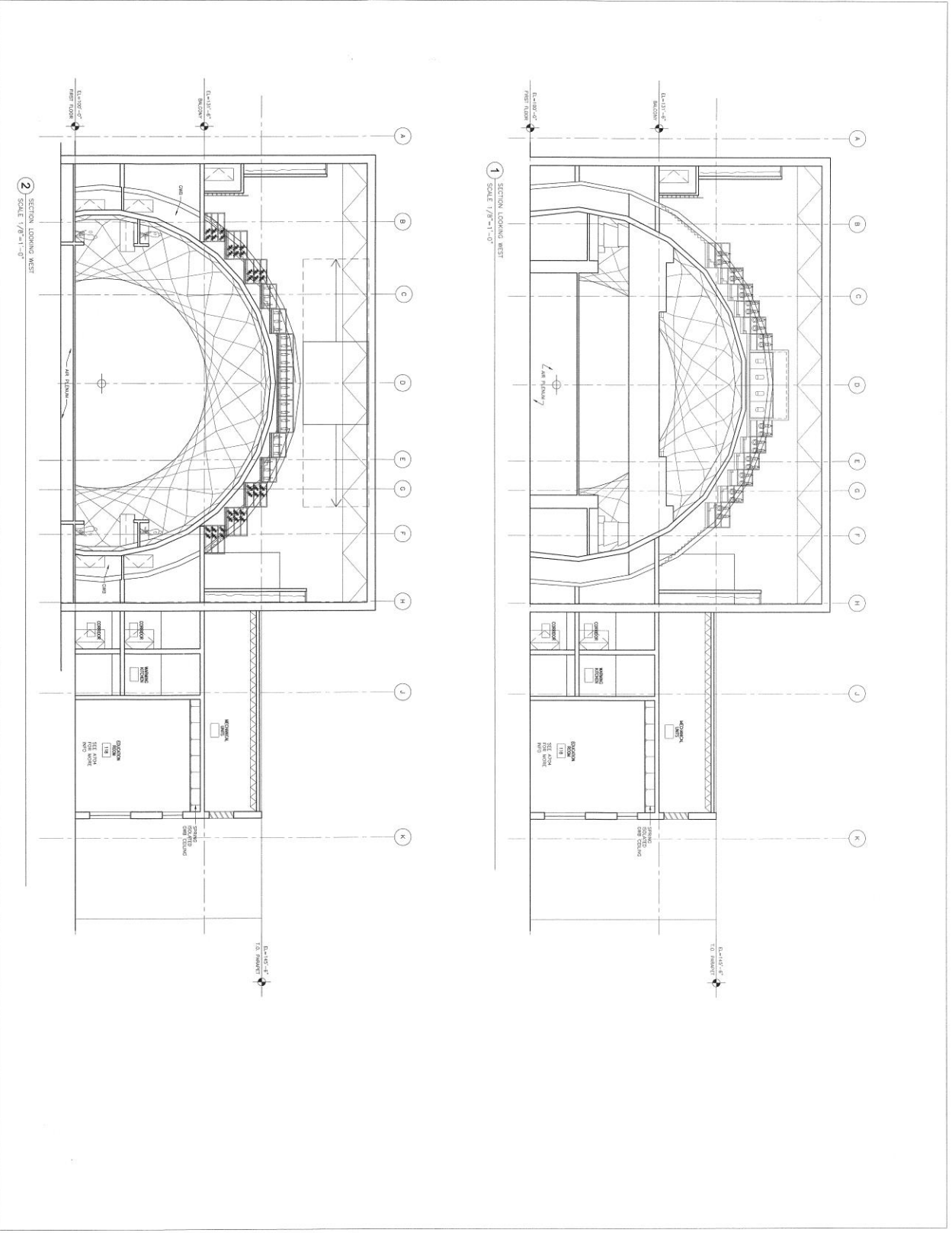
**CONSTRUCTION DOCUMENTS**  
 HUNTER PARTNERS ARCHITECTS  
 1100 WEST 10TH STREET  
 AMARILLO, TEXAS 79101  
 (806) 435-1100

**CONSTRUCTION DOCUMENTS**  
 HUNTER PARTNERS ARCHITECTS  
 1100 WEST 10TH STREET  
 AMARILLO, TEXAS 79101  
 (806) 435-1100

**CONSTRUCTION DOCUMENTS**  
 HUNTER PARTNERS ARCHITECTS  
 1100 WEST 10TH STREET  
 AMARILLO, TEXAS 79101  
 (806) 435-1100

**MA03**

H2



# GLOBE-NEWS CENTER for the Performing Art

AMARILLO, TEXAS

OFFICE OF THE ARCHITECT  
**HRP&A**  
 HARRIS RICHARDS PARTNERS ASSOCIATES, P.C.  
 ARCHITECTS  
 1000 WEST 10TH AVENUE, SUITE 1000  
 DENVER, COLORADO 80202  
 TEL: 303.733.1000  
 FAX: 303.733.1001  
 WWW.HRP&A.COM

ARCHITECT OF RECORD  
**HRP&A**  
 HARRIS RICHARDS PARTNERS ASSOCIATES, P.C.  
 ARCHITECTS  
 1000 WEST 10TH AVENUE, SUITE 1000  
 DENVER, COLORADO 80202  
 TEL: 303.733.1000  
 FAX: 303.733.1001  
 WWW.HRP&A.COM

GENERAL CONTRACTOR  
**AMERICAN CONTRACTORS INC.**  
 1000 WEST 10TH AVENUE, SUITE 1000  
 DENVER, COLORADO 80202  
 TEL: 303.733.1000  
 FAX: 303.733.1001  
 WWW.ACI-CO.COM

MECHANICAL, ELECTRICAL & PLUMBING  
**AMERICAN CONTRACTORS INC.**  
 1000 WEST 10TH AVENUE, SUITE 1000  
 DENVER, COLORADO 80202  
 TEL: 303.733.1000  
 FAX: 303.733.1001  
 WWW.ACI-CO.COM

MECHANICAL, ELECTRICAL & PLUMBING  
**AMERICAN CONTRACTORS INC.**  
 1000 WEST 10TH AVENUE, SUITE 1000  
 DENVER, COLORADO 80202  
 TEL: 303.733.1000  
 FAX: 303.733.1001  
 WWW.ACI-CO.COM

MECHANICAL, ELECTRICAL & PLUMBING  
**AMERICAN CONTRACTORS INC.**  
 1000 WEST 10TH AVENUE, SUITE 1000  
 DENVER, COLORADO 80202  
 TEL: 303.733.1000  
 FAX: 303.733.1001  
 WWW.ACI-CO.COM

MECHANICAL, ELECTRICAL & PLUMBING  
**AMERICAN CONTRACTORS INC.**  
 1000 WEST 10TH AVENUE, SUITE 1000  
 DENVER, COLORADO 80202  
 TEL: 303.733.1000  
 FAX: 303.733.1001  
 WWW.ACI-CO.COM

MECHANICAL, ELECTRICAL & PLUMBING  
**AMERICAN CONTRACTORS INC.**  
 1000 WEST 10TH AVENUE, SUITE 1000  
 DENVER, COLORADO 80202  
 TEL: 303.733.1000  
 FAX: 303.733.1001  
 WWW.ACI-CO.COM

MECHANICAL, ELECTRICAL & PLUMBING  
**AMERICAN CONTRACTORS INC.**  
 1000 WEST 10TH AVENUE, SUITE 1000  
 DENVER, COLORADO 80202  
 TEL: 303.733.1000  
 FAX: 303.733.1001  
 WWW.ACI-CO.COM

MECHANICAL, ELECTRICAL & PLUMBING  
**AMERICAN CONTRACTORS INC.**  
 1000 WEST 10TH AVENUE, SUITE 1000  
 DENVER, COLORADO 80202  
 TEL: 303.733.1000  
 FAX: 303.733.1001  
 WWW.ACI-CO.COM

MECHANICAL, ELECTRICAL & PLUMBING  
**AMERICAN CONTRACTORS INC.**  
 1000 WEST 10TH AVENUE, SUITE 1000  
 DENVER, COLORADO 80202  
 TEL: 303.733.1000  
 FAX: 303.733.1001  
 WWW.ACI-CO.COM

MECHANICAL, ELECTRICAL & PLUMBING  
**AMERICAN CONTRACTORS INC.**  
 1000 WEST 10TH AVENUE, SUITE 1000  
 DENVER, COLORADO 80202  
 TEL: 303.733.1000  
 FAX: 303.733.1001  
 WWW.ACI-CO.COM

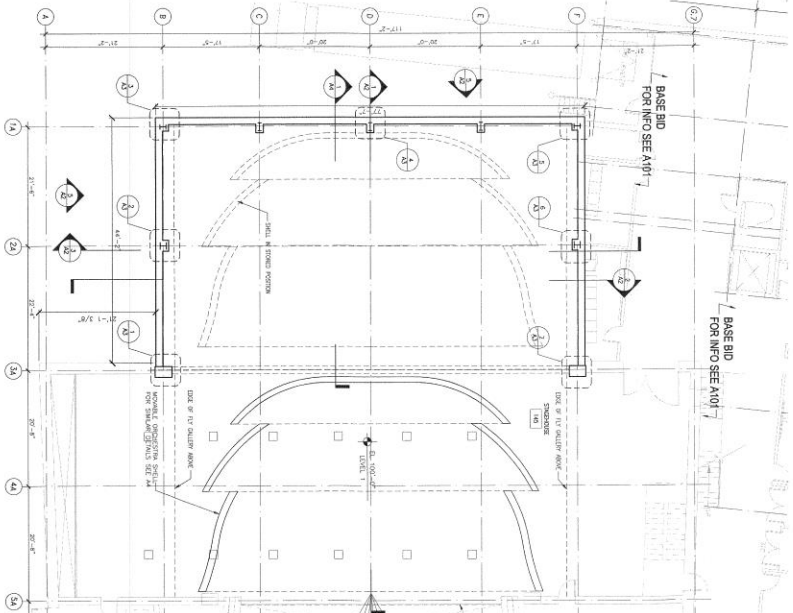
MECHANICAL, ELECTRICAL & PLUMBING  
**AMERICAN CONTRACTORS INC.**  
 1000 WEST 10TH AVENUE, SUITE 1000  
 DENVER, COLORADO 80202  
 TEL: 303.733.1000  
 FAX: 303.733.1001  
 WWW.ACI-CO.COM

MECHANICAL, ELECTRICAL & PLUMBING  
**AMERICAN CONTRACTORS INC.**  
 1000 WEST 10TH AVENUE, SUITE 1000  
 DENVER, COLORADO 80202  
 TEL: 303.733.1000  
 FAX: 303.733.1001  
 WWW.ACI-CO.COM

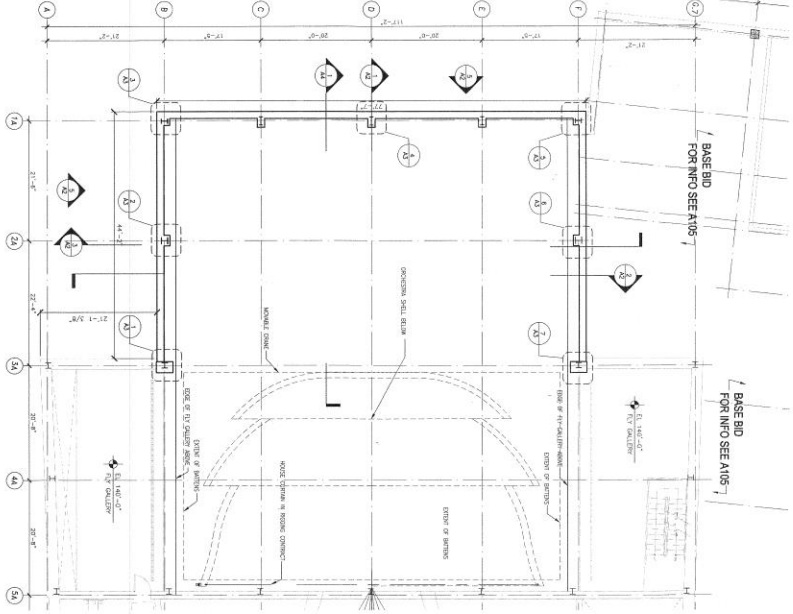
MECHANICAL, ELECTRICAL & PLUMBING  
**AMERICAN CONTRACTORS INC.**  
 1000 WEST 10TH AVENUE, SUITE 1000  
 DENVER, COLORADO 80202  
 TEL: 303.733.1000  
 FAX: 303.733.1001  
 WWW.ACI-CO.COM

**A406**

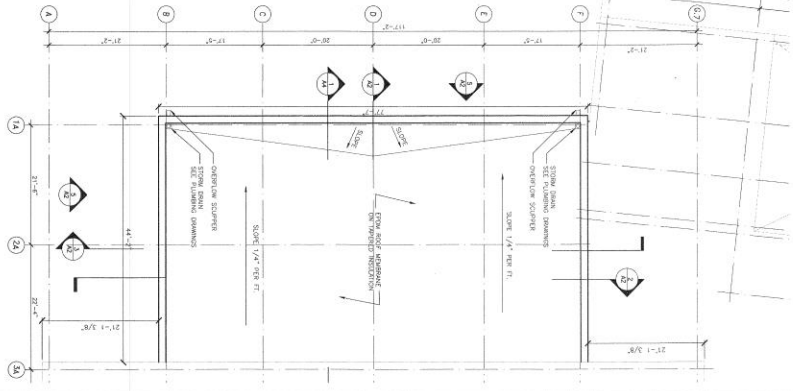
1 PERIM PLAN - ADD ALTERNATE #1 - EL. 102'-0"  
SCALE 1/8"=1'-0"



2 PERIM PLAN - ADD ALTERNATE #1 - EL. 140'-0"  
SCALE 1/8"=1'-0"



2 EXTERIOR ROOF PLAN - ADD ALTERNATE #1  
SCALE 1/8"=1'-0"



**ADD1-A1**

CONSTRUCTION DOCUMENTS

11/02

11/02



**GLOBAL NEWS CENTER**

for the Performing Art

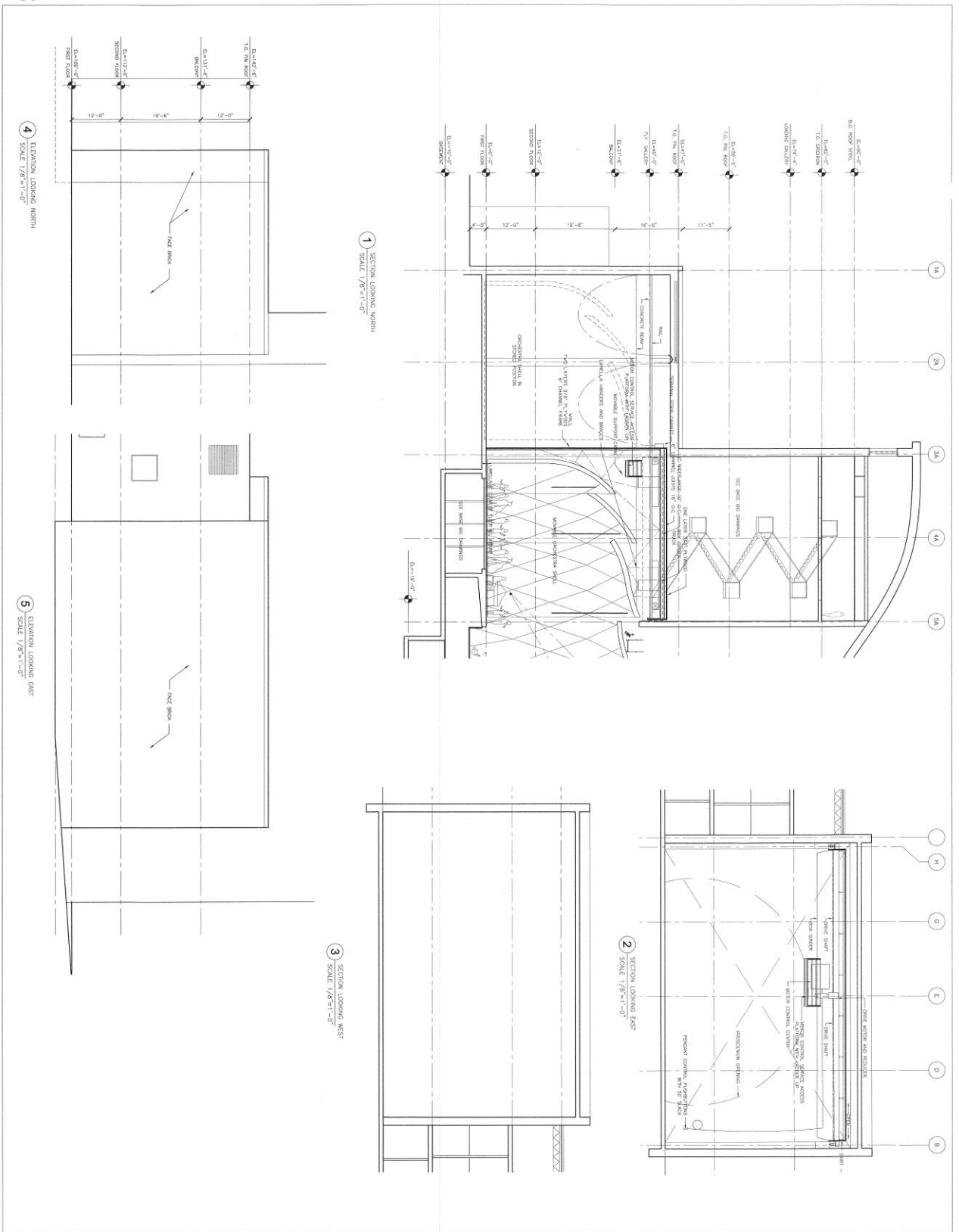
AMARILLO, TEXAS

11/02

**GLOBAL NEWS CENTER**

for the Performing Art

AMARILLO, TEXAS



**GLOBE-NEWS CENTER**  
for the Performing Art  
AMARILLO, TEXAS

**HIPPA**  
HILLTOP PERFORMING ARTS ASSOCIATION

**ARCHITECT**  
HILLTOP PERFORMING ARTS ASSOCIATION

**ARCHITECT**  
HILLTOP PERFORMING ARTS ASSOCIATION

**ARCHITECT**  
HILLTOP PERFORMING ARTS ASSOCIATION

**ARCHITECT**  
HILLTOP PERFORMING ARTS ASSOCIATION

**ARCHITECT**  
HILLTOP PERFORMING ARTS ASSOCIATION

**ARCHITECT**  
HILLTOP PERFORMING ARTS ASSOCIATION

**ARCHITECT**  
HILLTOP PERFORMING ARTS ASSOCIATION

**ARCHITECT**  
HILLTOP PERFORMING ARTS ASSOCIATION

**ARCHITECT**  
HILLTOP PERFORMING ARTS ASSOCIATION

**ARCHITECT**  
HILLTOP PERFORMING ARTS ASSOCIATION

**ARCHITECT**  
HILLTOP PERFORMING ARTS ASSOCIATION

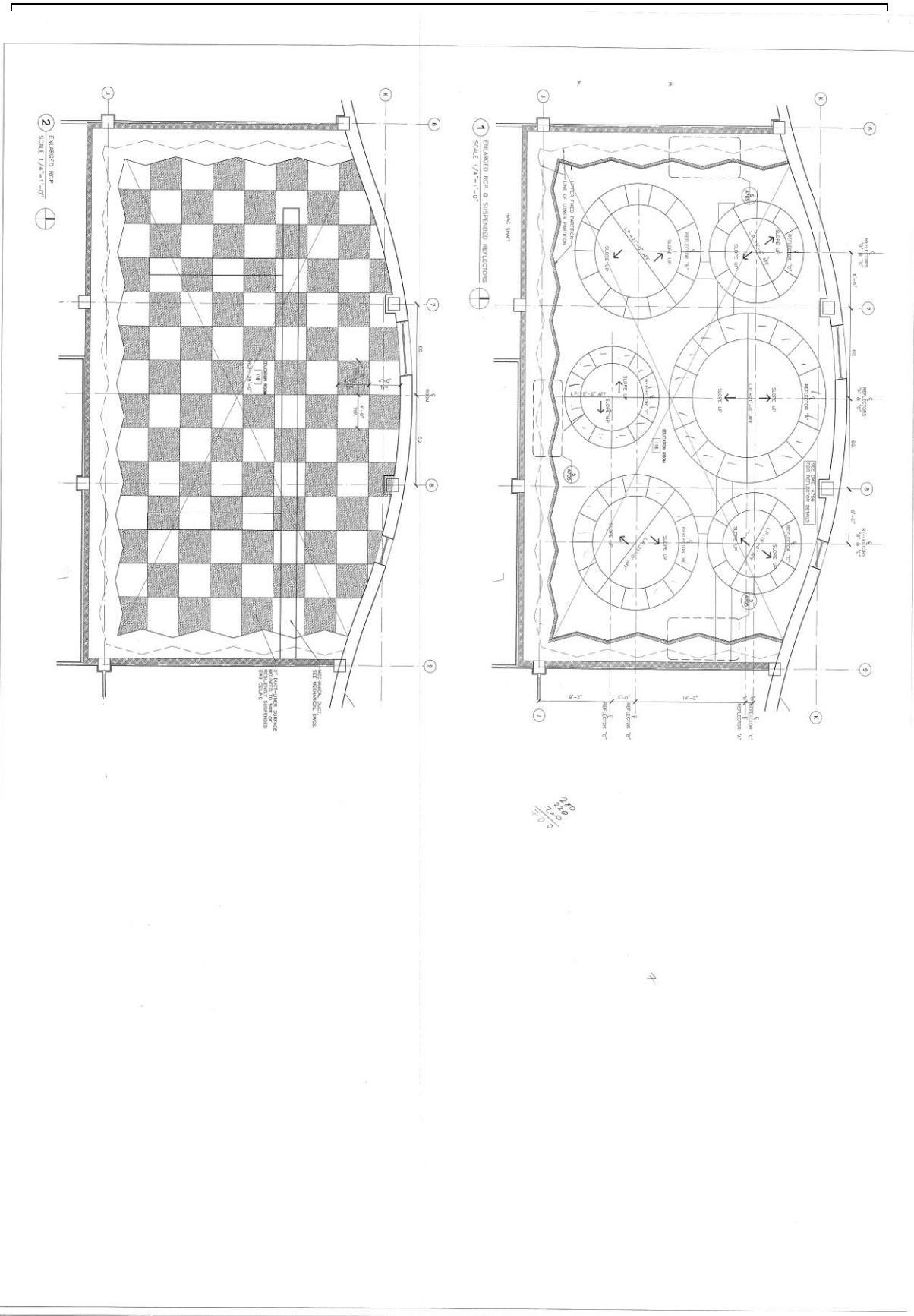
**ARCHITECT**  
HILLTOP PERFORMING ARTS ASSOCIATION

**ARCHITECT**  
HILLTOP PERFORMING ARTS ASSOCIATION

**ARCHITECT**  
HILLTOP PERFORMING ARTS ASSOCIATION

**ARCHITECT**  
HILLTOP PERFORMING ARTS ASSOCIATION

**ADD1-A2**



10  
11  
12  
13  
14  
15  
16  
17  
18  
19  
20  
21  
22  
23  
24  
25  
26  
27  
28  
29  
30  
31  
32  
33  
34  
35  
36  
37  
38  
39  
40  
41  
42  
43  
44  
45  
46  
47  
48  
49  
50  
51  
52  
53  
54  
55  
56  
57  
58  
59  
60  
61  
62  
63  
64  
65  
66  
67  
68  
69  
70  
71  
72  
73  
74  
75  
76  
77  
78  
79  
80  
81  
82  
83  
84  
85  
86  
87  
88  
89  
90  
91  
92  
93  
94  
95  
96  
97  
98  
99  
100

**GLOBE-NEWS CENTER**  
for the Performing Art

AMARILLO, TEXAS



CONSTRUCTION DOCUMENTS  
DATE: 11/1/77  
SCALE: AS SHOWN  
PROJECT: GLOBE-NEWS CENTER  
SHEET: A707