

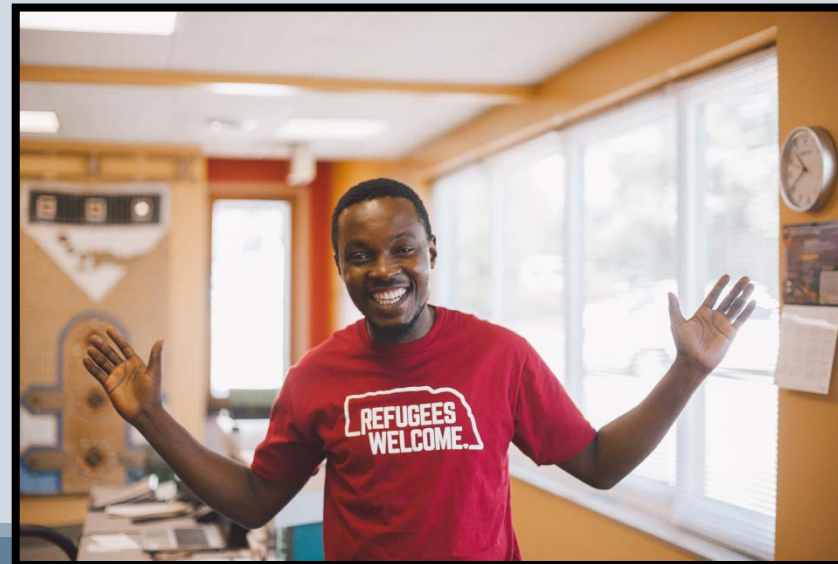


Best Practices Gallery and Case Studies

May 27, 2021

Community Centers and Restaurant Incubators

- ❖ Oakland Bloom
 - ❖ Oakland, California
- ❖ Spice Kitchen Incubator
 - ❖ Salt Lake City, Utah
- ❖ Clarkston Community Center
 - ❖ Clarkston, Georgia



Oakland Bloom

Oakland, California

- ❖ Oakland Bloom is a nonprofit that works towards developing new cooperative food business models that prioritize community, people power, and economic equity for poor and working-class immigrant, refugee, and BIPOC chefs. They do this through a food business incubator and training program, direct service referral network and community collaborations.
- ❖ Oakland Bloom is mindful of how their work interacts with local histories, food systems and communities of color in Oakland. They seek to engage the neighborhoods within which they operate, to support the working class, immigrant neighbors and communities of colors against displacement.
- ❖ They are very sensitive to the needs of the clients and the everyday struggles that the chefs experience. Oakland Bloom prioritizes income generation and commercial opportunities for the chef-entrepreneurs, including supporting them to have the ability to fully participate in the program with stipends, childcare, interpretation, transportation, and connecting them with a holistic network of direct service organizations to support chefs to meet basic needs and respond to crises as they arise.



Spice Kitchen

Salt Lake City, Utah

- ❖ Spice Kitchen is a food business incubator focused on creating opportunities for refugees and disadvantaged individuals. We help our participants start full- or part-time food businesses by providing technical assistance and training and access to commercial kitchen space.
- ❖ Participants receive technical assistance and training, have affordable access to a commercial kitchen space and learn the steps to establishing a successful food business.
- ❖ Spice Kitchen Incubator is a project of the International Rescue Committee (IRC), and was founded in partnership with Salt Lake County.



Clarkston Community Center

Clarkston, Georgia

- ❖ Clarkston Community Center is a meeting place for both long-term residents and families and individuals that were not born in the U.S. 43% of Clarkston's residents are foreign-born and more than half are living in poverty. The CCC provides unique experiences, educational resources, and valuable tools that foster community while celebrating cultural diversity.
- ❖ The CCC provides classes to assist people in acclimating to a new culture and language, as well as special events to update people on the current status of laws pertaining to refugees and immigrants.
- ❖ The refugee programs offered include ESL, Citizenship Classes, Youth Development, a Food Pantry, and Summer Camps for children.





Village Exchange Center

Aurora, Colorado



- ❖ The Village Exchange Center is a non-profit organization formed to serve immigrants and refugees in the Aurora/Denver metro area by providing a safe space for programs, organizations, and services that support integration, engagement, and empowerment while respecting and honoring these communities' unique traditions and values.
- ❖ They produce numerous donation-based workshops and education programs for both kids and adults throughout the year.
- ❖ They partnered with the City of Aurora to co-create **The Natural Helpers Program**. The program mobilizes a group of volunteers who are immigrants themselves to help other immigrants and refugees navigate life in a new country. With this program, new immigrants gain access to resources such as social services, information on community organizations and networking for better job opportunities.
- ❖ The Village Exchange Center also has a successful food pantry that has fed over 1,600 at-risk families from over 18 different countries of origin. Most of the produce used at the food pantry is locally grown at The Village Farms at Stanley.



The Village Farms at Stanley

Aurora, Colorado

❖ The Village Farms is an urban agriculture program created by the Village Exchange Center. It is a social enterprise farming project that serves the Village Exchange Center's mission of celebrating religious and cultural diversity through food access and security.



❖ The goal of the Village Farms is to not only mitigate the area's food desert, but to grow and cook food in accordance with a variety of different agricultural practices. The farm itself incorporates both soil and hydroponic farming methods in order to increase access to fresh and culturally-appreciated foods, encourage careers in agriculture, and to generate revenue.



 VILLAGE
EXCHANGE
CENTER 

**EMPOWERING
COMMUNITY
THROUGH
EXCHANGE**

VILLAGE EXCHANGE CENTER



Urban Agricultural Programs

- ❖ New Roots Cooperative Farm
 - ❖ Lewiston, Maine
- ❖ The Ohio City Farm
 - ❖ Cleveland, Ohio
- ❖ Cultivating Community
 - ❖ Portland, Maine
- ❖ Global Gardens
 - ❖ Boise, Idaho
- ❖ New Roots for Refugees Program
 - ❖ Kansas City, Missouri



New Roots Cooperative Farm

Lewiston, Maine

- ❖ Four Somali Bantu farmers came together in Lewiston, Maine to create a farm cooperative named “New Roots Cooperative Farm”.
- ❖ We are building economic security for New Americans by providing delicious vegetables for our community. By purchasing our food, you are getting healthy food for your family and helping grow security, jobs and ownership in the Somali Bantu community in Lewiston. Our cooperative provides us with access to land, equipment, and markets.
- ❖ The cooperative has provided a bridge from farmer’s traditional farming activities in Somalia to actively participating in the farming community here. It has provided an opportunity for refugees to settle down, become socially integrated, and make a living.
- ❖ “Our idea for farming at New Roots is to help and support each other . . . to bring economy and jobs [to] our community . . . having New Roots cooperative farming will help a lot of our people to have farming practices in communities.”

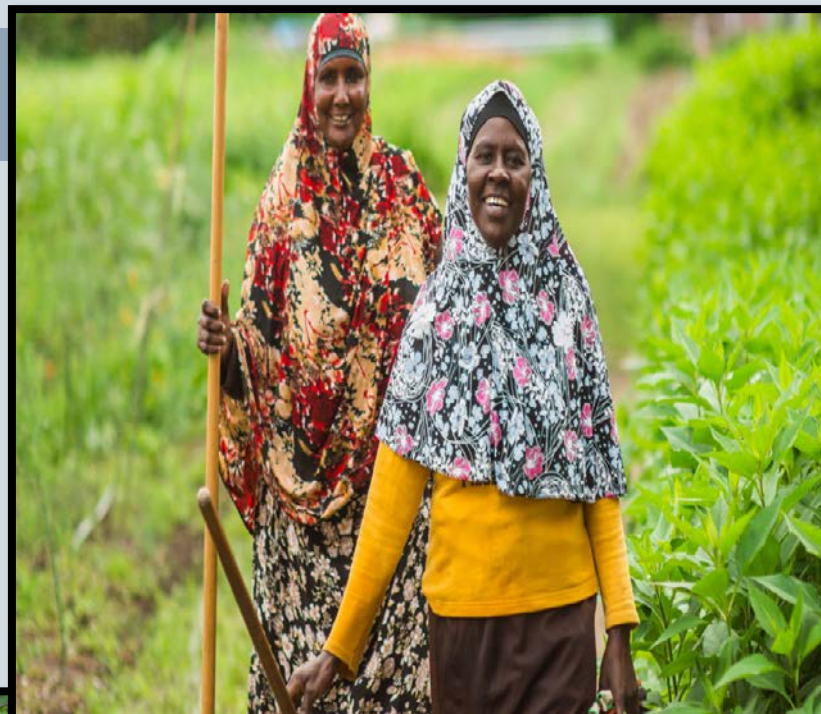




The Ohio City Farm

Cleveland, Ohio

- ❖ The Ohio City Farm, one of the largest contiguous urban farms in the United States at nearly six acres, exists to provide fresh, local and healthy food to Cleveland's underserved residents, boost the local food economy, and educate the community about the importance of a complete food system.
- ❖ Ohio City Farm is operated by The Refugee Response, a non-profit that works to empower refugees to become self-sufficient and contributing members of their new communities.
- ❖ Since breaking ground in 2010, at least seven countries of origin have been represented on the farm team. Many refugees working at the farm have a background working agriculture in their home countries and bring a wide range of experience to their work.
- ❖ CSA subscriptions allows the farm to employ 9 full time former refugees for the season in addition to 2 part time support staff.



Cultivating Community

Portland, Maine

- ❖ Cultivating Community grows sustainable communities by expanding access to healthy, local food; empowering children, youth, and adults to play diverse roles in restoring the local, sustainable food systems; and modeling, teaching, and advocating for ecological food production.
- ❖ Fresh Start Farms, a food hub operated by Cultivating Community, works with New American farmers—many of whom are refugees or immigrants from Somalia, Republic of Congo, Afghanistan, and South Sudan—to distribute the produce they grow to numerous outlets in the community, such as schools, pantries, and retail outlets.
- ❖ The New American Sustainable Agriculture Project (NASAP) is a refugee and immigrant farmer training program, based out of two incubator farms in Lisbon and Falmouth. Farmers in the NASAP program gain land access and food security, while simultaneously increasing the amount of local, sustainably-grown food for our Maine communities.
- ❖ All profits gained from CSA subscriptions from the food hub go directly back to the farmers.



Global Gardens

Boise, Idaho

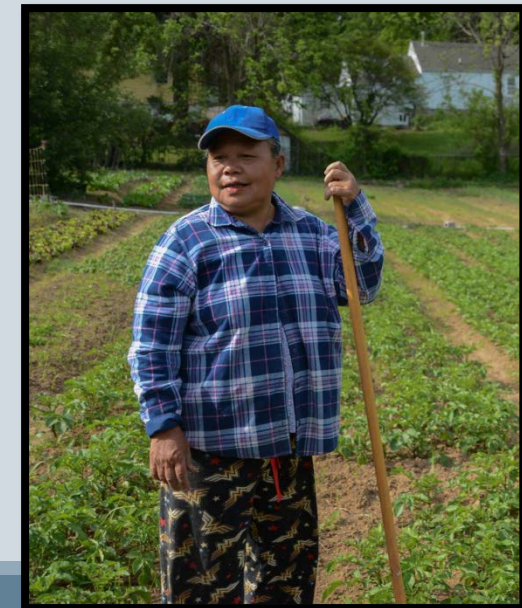
- ❖ Global Gardens is a program of the Idaho Office for Refugees and Jannus, Inc. They welcome farmers and gardeners to engage in work that brings them joy, provides nutritious food for their families and community, and earns a fair wage within our local food economy. Global Gardens help farmers access land, training, and markets, and provide more than 100 community garden spaces.
- ❖ Refugees face numerous cultural, linguistic, and economic barriers while entering the market as farm entrepreneurs; Global Gardens is focused on breaking down those barriers and supporting refugees as full participants in the local food economy.
- ❖ Their Farmer Entrepreneurship Program provides farmers with access to a plot of land, extensive training, and help to sell and market their produce through CSA, farmers markets, and wholesale operations.
- ❖ All the farming and gardening is done on donated land in and around Boise and uses organic practices. The City of Boise and the Five Mile Church of the Nazarene support Global Gardens farmers by providing access to land throughout the city.



New Roots for Refugees

Kansas City, Missouri

- ❖ New Roots for Refugees is a four-year training program that began in 2008 as a collaboration between Catholic Charities of Northeast Kansas and Cultivate KC. Both organizations work to provide farmer training and market support at the Juniper Gardens Training Farm to help farmers develop and maintain small businesses after graduation.
- ❖ At the Juniper Gardens Training Farm, farmers are given a quarter-acre plot to grow vegetables such as tomatoes, beets, spinach, green onions, lettuce, eggplants, and more. Farmers bring agricultural expertise from their home country and continue to learn more about growing sustainably in the Midwestern climate.
- ❖ New Roots for Refugees is designed to remove the initial barriers to start a small business. These include systemic challenges like economic mobility, language, networking, and access to education and support. Divided between the growing season and winter classes, farmers at the New Roots program are involved year-round.
- ❖ Since 2008, New Roots has had over 30 farmers graduate from the program, 21 of whom still operate a farm business today. You can support New Roots farmers at a local farmers market, restaurant, or by subscribing to the Farm Share program.



Small Business & Workforce Development Programs

- ❖ Idaho Office for Refugees
 - ❖ Boise, Idaho
- ❖ The Refugee Response
 - ❖ Cleveland, Ohio
- ❖ ALLV Inc.
 - ❖ Burlington, Vermont
- ❖ Monument Impact
 - ❖ Concord, California





Idaho Office for Refugees

Boise, Idaho

- ❖ The Idaho Office for Refugees strives to ease the transition for those seeking refuge in the United States by providing education, connection, and space for growth.
- ❖ Through contracts and cooperative agreements, the IOR supports English language training, employment services, immigration assistance, language assistance, case management and social adjustment services, community events and programming, agricultural training and community garden programs, and pathways to self-sufficiency.
- ❖ IOR creates opportunities for refugees and the larger community to come together over their shared values of hard work, family, faith, and freedom, through English Language education, cultural events, and programs like Global Gardens and the Refugee Speakers Bureau.





Upcoming Classes

Voting and the US Government
October 24th
6:00pm-8:00pm
Taft Community School
Interpreters available
Snacks provided

Parenting and child laws in America
November 28th
6:00pm-8:00pm
Location TBD
Interpreters available
Snacks provided

US Culture & Law Classes

The Idaho Office for Refugees and the City of Boise are hosting monthly free classes on different topics about American culture and laws.

The classes are free and open to anyone who arrived as a refugee or immigrant.

Questions?
Salome: 208-947-4325 or smwangi@idahorefugees.org
www.idahorefugees.org





Taxes - Where to file and avoid fraud
December 19th
6:00pm-8:00pm
Location TBD
Interpreters available
Snacks provided

Family Relationships and US Law
January 23rd
6:00pm-8:00pm
Location TBD
Interpreters available
Snacks provided



Full Program Information:

The Refugee Response

Cleveland, Ohio

- ❖ The Refugee Response empowers resettled families to grow roots, supporting them in becoming engaged, self-sufficient and contributing members of their new communities.
- ❖ Refugee Response has a few different programs that assist refugees with training for a variety of jobs. Their Young Adult Employment program and Multilingual Content Creation program gives new refugees opportunities to try different jobs with different companies. This allows them to gain experience with American businesses which will help them find future jobs and careers.



AALV Inc.

Burlington, Virginia

- ❖ The AALV helps new Americans from all parts of the world gain independence in their new communities through a range of integration services. This includes workforce development, behavioral health awareness, and interpreter services programming.
- ❖ It was founded seven years ago as a way for the small African community at that time to get together for social events as well as discuss the challenges of being in America.
- ❖ ALLV offers two workforce development projects, in agricultural enterprise and in allied health job skills training.
- ❖ The New Farms for New Americans project has 50 refugees and other immigrants farming 3.5 acres in Burlington's Intervale district.
- ❖ For refugees and immigrants interested in becoming Home Health Aids or Licensed Nurses assistants, AALV provides technical training and English Language Assistance to prepare them for certification and job placement in health care.



Monument Impact

Concord, California

- ❖ The mission of Monument Impact is to ensure that immigrants, refugees and low-income residents in Concord and surrounding communities have the voice, tools and relationships necessary to have an equitable share of the social and economic wealth in the region.
- ❖ The Workforce Development programs offer multiple pathways to self-sufficiency and economic advancement. They offer comprehensive beginning to advanced level technology classes, small business support for Concord residents, and CalWORKs's Welfare to Work program for new refugees and immigrants. The goal is to help community members develop the skills to secure employment.
- ❖ Monument Impact helps small business owners in Concord formalize their businesses. Registering a business increases professional credibility and provides small business owners with the confidence and freedom to fully promote their services. They offer one-on-one coaching that focuses on the beginnings steps of opening a small business.



Housing Conditions & Code Enforcement

- ❖ Rental Registration Program

 - ❖ Fate, Texas

- ❖ Cities Rise

 - ❖ State of New York

- ❖ The Porch Project

 - ❖ Flint, Michigan

- ❖ Extreme Neighborhood Makeover

 - ❖ Santa Clarita, California

- ❖ Cities of Service Grant Program





Rental Registration and Licensing

Fate, Texas

- ❖ Rental registration is a local regulation that requires landlords to register with the city and provide the city with essential information. Some programs also require inspection.
- ❖ The purpose of these programs is to ensure these properties are safe to occupy, improve property conditions and to protect property values.
- ❖ Fate, TX Program Criteria
 - *An owner of any rental dwelling unit is required to register their properties annually.*
 - *An application shall be submitted to the City of Fate identifying the property owner information and local property management representative.*
 - *An inspection will be performed prior to occupancy, at any change of ownership or tenancy, upon complaint basis and annually upon registration renewal.*
 - *The standards of condition of all dwellings are established within the International Property Maintenance Code (IPMC) as adopted by the City of Fate.*



| | Fees |
|-------------------|-------------------|
| Single-Family | \$ 85.00 Annually |
| Multi-Family | \$ 25.00 Per Unit |
| Late registration | \$ 150.00 |
| Re-Inspection | \$ 75.00 |



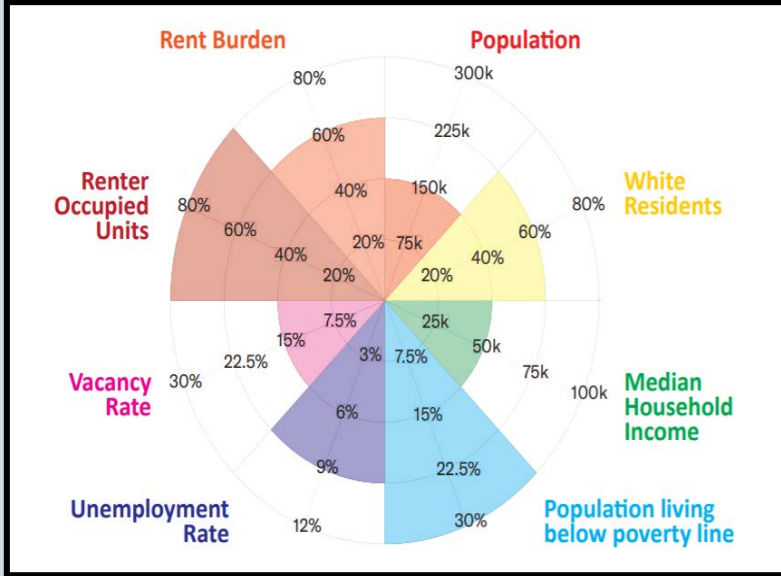
This article provides a useful background on neighborhood code enforcement:
[“Code Enforcement is Vital to Community Development”](#)



Cities RISE

New York

- ❖ The Cities for Responsible Investment and Strategic Enforcement (“[Cities RISE](#)”) program provides municipalities across New York State with critical tools and support to improve their data systems and code enforcement practices. The goal is to develop innovative and implementable strategies to improve housing conditions and eliminate distressed properties. Participating municipalities receive up to three phases of funding over a two-year period to support data integration, community engagement, change management, and new programs and policies.
- ❖ Program builds on equitable code enforcement framework by encouraging communities to:
 1. Develop and implement policies that address community-defined needs.
 2. Strengthen relationships between government and community.
 3. Shift power from government to community.
- ❖ Cities RISE published their guide to “[The Power & Proximity of Code Enforcement](#)” in June 2019, with proven methodology and case studies in 16 “Cities RISE” municipalities.



The Porch Project

Flint, Michigan

- ❖ The Porch Project began with Megan Heyza who lived on the east side of Flint. Meagan landscaped her front yard and painted her porch which opened a new world. As she beautified her home, it created an opportunity for Meagan to engage with her neighbor and birth a better community. Through this action, The Porch Project was born.



The Porch Project

April 20 · 🌐



The Porch Project (TPP) is a resident-led neighborhood revitalization project that engages residents through a bottom-up approach where residents "opt-in" to the program by agreeing to maintain their front yard and porch area. In turn, residents are asked to connect with their neighbors through regular conversation. Historically, Flint neighborhoods have experienced disengagement. Distrust breeds contempt which creates barriers to engagement between residents. The project supports neighborhood engagement and embeds safety measures into every home that participates in the effort.



YOUTUBE.COM

The Porch Project Mini-Documentary

Megan Heyza lived on the east side of Flint. Meagan landscaped h...

Extreme Neighborhood Makeover

Santa Clarita, California

- ❖ A hands-on, grassroots effort, the makeover program was designed to build positive community relations, strengthen good will among neighbors and support local businesses while improving neighborhood conditions. As a result, the city reached almost 500 homes and, for a relatively low cost, improved compliance rates from 10% to 95%.
- ❖ Low-income homeowners in Santa Clarita were having a hard time keeping up with building maintenance. The result was a concentration of unsafe conditions and would-be code violations in vulnerable neighborhoods. Instead of burdening homeowners who were already hurting with violations and fines that would undoubtedly cause economic hardship and might even result in eventual foreclosure, the city started their own Extreme Neighborhood Makeover program.
- ❖ The city collaborated with various nonprofits, local businesses and community volunteers to sponsor kick-off block parties in target areas. Local elected officials turned out to meet their constituents and city employees provided information about local regulations, grant programs, and other resources for homeowners and tenants. Local businesses sold food and drinks, and neighbors came out to eat, meet each other, and figure out ways to work together to improve their neighborhood. Each block party was followed up with a thank you letter and a heads-up list of current violations from the city. City staff continuously checked in with residents to clarify issues or connect them to resources.

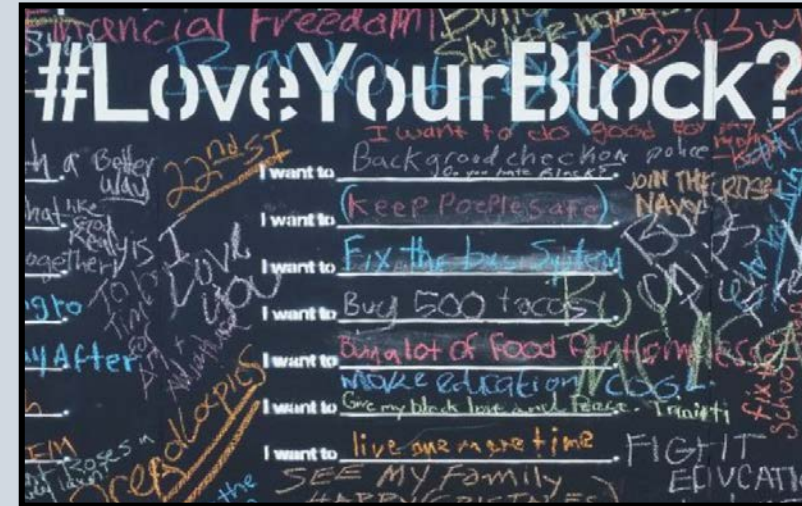


“Cities of Service” Grant Program

- ❖ “Through Love Your Block, city leaders engage citizen volunteers to revitalize city neighborhoods, one block at a time”
- ❖ Love your Block is a high-impact service strategy that connects city leaders with community residents to help revitalize their neighborhoods one block at a time. Typically, city officials provide small grants that support volunteer-fueled solutions developed by the community. Whether turning vacant lots into community gardens, removing graffiti, or helping elderly neighbors with simple home repairs that allow them to keep their homes, citizen volunteers are making their neighborhoods — and their cities — better places to live.
- ❖ The program has been designed and **published** to act as a tool for any community:
 - ❖ The program is most effective when it includes the following steps:
 - ❖ Identify a pressing public problem the city hopes to address with the energy and commitment of resident volunteers.
 - ❖ Engage residents and other community stakeholders, including city agencies, to discuss the problem and identify possible solutions.
 - ❖ Design the initiative with input from the community.
 - ❖ Coordinate city services that can complement neighborhood projects.
 - ❖ Introduce a mini-grant competition to provide small grants to neighborhood groups to help cover the costs of volunteer projects.
 - ❖ Activate volunteers and community groups.
 - ❖ Work with neighborhood groups to track and report impact metrics for each project, learning from challenges and making mid-course program corrections when necessary.
 - ❖ Share and celebrate successes with residents and other community stakeholders.
 - ❖ Take steps to make the initiative sustainable.

“We really care that we leave behind better equipped neighborhoods to handle their areas of concern, that’s our goal. We want to create spaces for collaboration.”

Director of Department of Neighborhoods and Citizen Engagement
Andi Crawford
📍 Lansing, MI



Crime Reduction

- ❖ LandCare
 - ❖ Philadelphia, PA
- ❖ Place-Based Interventions
- ❖ Neighborhood Watch and National Night Out
- ❖ Neighbor2Neighbor Online Network



LandCare Philadelphia, PA

- ❖ The Pennsylvania Horticultural Society (PHS) uses gardening and landscaping to clean, green, and maintain vacant lots. Creating and improving greenspace, building pocket parks, cleaning and maintaining vacant lots can prevent violent crime.
- ❖ With support from the City of Philadelphia, PHS partners with a network of contractors and community groups turn vacant lots into a positive public green space. These spaces create lasting benefits including decreased gun violence and improved mental health.
- ❖ The LandCare program holds two primary initiatives: “Clean and Green” and Community LandCare.
 - ❖ The “Clean and Green” program targets vacant parcels in neighborhoods without open or green spaces. PHS then hires city-based landscape contractors, who clean and mow the lots twice per month from April through October.
 - ❖ Through the Community LandCare initiative, PHS works with 18 community organizations. Together, we hire local residents to perform landscape maintenance work on vacant lots in their neighborhoods.

A randomized controlled trial in Philadelphia found that “removing trash and debris, grading the land, planting new grass, installing low wooden perimeter fences, and then regularly maintaining the newly treated lot” reduced residents’ safety concerns when going outside their homes by 58 percent, while decreasing crime overall by 9 percent, gun violence by 17 percent, and police-reported nuisances by 28 percent (Branas et al. 2018).

“Where children tossed empty cans in a once-neglected lot, they now feel ownership of the space. They come by and say, ‘Mrs. Parker, the grass is getting kind of high!’... It’s about the best thing that could have happened.”

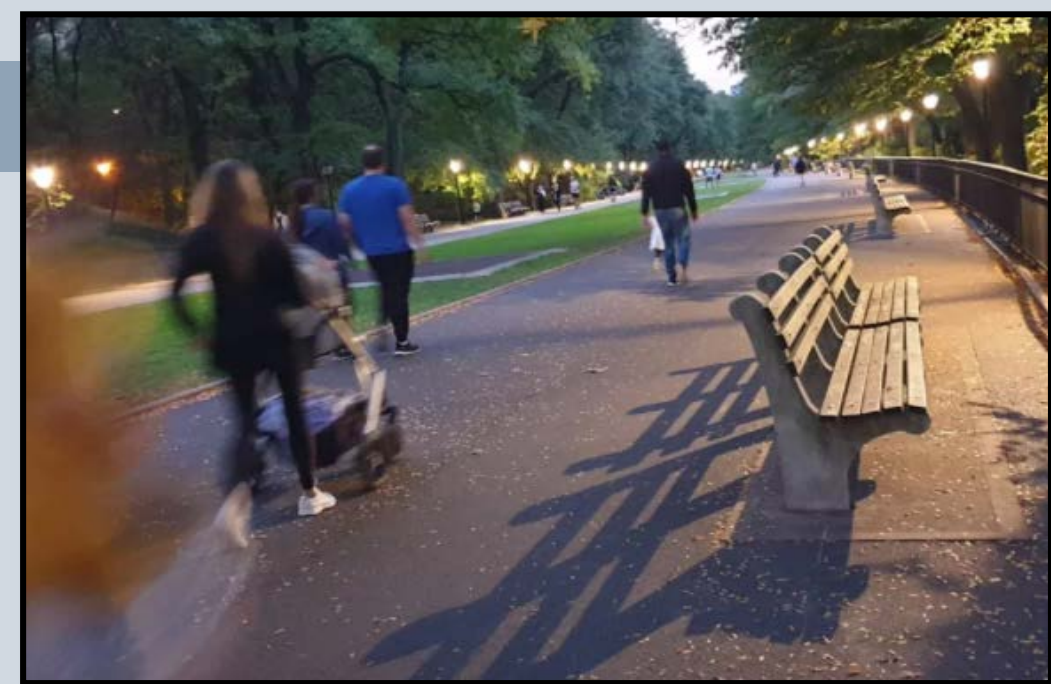
Shelia Parker
West Philadelphia resident





Place-Based Interventions

- ❖ Place-based interventions that are structural, scalable, and sustainable have been shown to reduce violence and many strategies are economically viable
- ❖ Increasing the prevalence of green space in a neighborhood, improving the quality of neighborhood buildings and housing, and creating public spaces with ample lighting suitable for pedestrian traffic can be cost-effective ways of decreasing community violence.
- ❖ Traffic impact – redirecting the flow of traffic through cul-de-sac installments, using barriers until a permanent installment is possible, can reduce:
 - ❖ Traffic accidents by up to 40%,
 - ❖ Violent crime by up to 20%,
 - ❖ And overall crime by up to 26%





Neighborhood Watch Programs and National Night Out

- ❖ A Neighborhood Watch is an organization that helps residents in a particular neighborhood prevent or reduce crime, develop a positive rapport with law enforcement, and become the "eyes and ears" for our police department.
- ❖ The Amarillo Police Department Crime Prevention Unit will help you organize a Crime Watch Area. Once the area is organized, officers will send bulletins to Crime Watch Areas on an as needed basis.
- ❖ National Night Out is an annual event hosted by the [National Association of Town Watch](#) and occurs the first Tuesday in October in Texas.
- ❖ The primary purpose of National Night Out is to get neighbors to leave their front porch lights on, showing their support with their local police departments in the fight against crime. Neighbors are encouraged to get out of their houses and meet other neighbors in the area and get to know them.
- ❖ Having a block party or neighborhood gathering is the easiest way to get neighbors together.



“Neighborhood Watch programs are the most effective means available for keeping crime out of neighborhoods. It relies on the best crime fighting tool ever invented, i.e., a good neighbor.”





Neighbor 2 Neighbor Online Forum

- ❖ Online networking for people interested in reducing crime in neighborhoods. Topics include:
 - *Crime Watch Programs*
 - *Crime Mapping*
 - *Removing Drugs and Prostitution from their Neighborhoods*
 - *Reducing Recidivism in the Neighborhood*
 - *Night Out Against Crime Events*
 - *Community-Oriented Policing*

A neighborhood might be in bad condition for decades -- forty or fifty years of disregard and disinvestment. Neighbors will tell you they've been calling city government to do something about it for decades. Once a neighborhood is actually improved, whether it be abandoned buildings or green spaces and parks, the neighborhood does not want it to return to the way it was. They will go out of their way to be certain that little things don't happen on or near those spaces that would bring back the old problems, including acts of violence. The neighbors connect with each other and the newly revitalized spaces to make sure the spaces don't return to how they were in the past.



Bulk Trash Pick-Up & Neighborhood Clean-Up Programs

- ❖ Bulk Trash Pick-Up
 - ❖ City of Amarillo
- ❖ Neighborhood Tool Lending and Roll-Off Free “Rental,”
 - ❖ Scottsdale, Arizona
- ❖ Adopt-a-Spot
 - ❖ Tacoma, Washington



Bulk Trash Pick-Up

Amarillo, Texas

- ❖ Bulky-Item Pick-Up
 - ❖ This service is free to Amarillo residents. The Solid Waste Collection division provides safe and efficient collection of residential and commercial solid waste within the City limits. Because of potential hazards in alleyways including overhead power lines, trees, fences, gas lines, and other obstacles, it is neither safe nor efficient to continue providing bulky trash pick-up from alleys.
- ❖ Pick-Up Process
 - ❖ For large items that do not fit into the dumpster, call the Solid Waste Collection division **(806) 378-6813** to schedule a pick-up. You will be given a pick-up date.
 - ❖ Place your items on the curb no earlier than 5:00PM the night before and no later than 7:00AM on the scheduled pick-up date.
 - ❖ The items will be picked up within 24-hours of the scheduled pick-up date, except during inclement weather or other service delays.
 - ❖ You will be contacted if there is a delay that is longer than 24-hours beyond the scheduled pick-up date.



Learn about illegal dumping with the City's Inside Public Works video:

<https://www.facebook.com/442923839052537/videos/760412194844069>

YES

All waste must fit in dumpster
Commercial and construction waste must be taken to the landfill

TOO BIG? NO BIGGIE!

1 CALL US TO SCHEDULE PICKUP
806-378-6813

2 PLACE IT ON YOUR FRONT CURB

3 WE'LL PICK IT UP FAST & FOR FREE!

NO

❌ Bulk waste left in alley is illegal and may result in a fine

Neighborhood Clean-Up Program Scottsdale, Arizona

❖ Through the Neighborhood Cleanup Program, the City is committed to helping maintain the vitality of our original community by focusing on aesthetic improvements and promoting well-maintained and safe neighborhoods.

❖ As part of this program, the city is providing two free services under the Neighborhood Cleanup Program to residents/volunteers who organize neighborhood cleanup efforts. A neighborhood can request both services or one of the other depending on what is required to complete the cleanup project.

1. **Tool Lending Service** - Landscape tools are available for loan to assist Scottsdale residents and community volunteer groups with removing accumulated debris in their neighborhood. (Minimum of 5 organized households or volunteer groups).
2. **Roll-Off Commercial Dumpster Service** - A 30-yard roll-off commercial dumpster is available free of charge to assist Scottsdale residents with accumulated debris in their neighborhood. At least 5 organized households must participate in the neighborhood cleanup.



“Adopt-A-Spot” Tacoma, Washington

- ❖ The Adopt-A-Spot Program is a year-round partnership between the City and neighborhood groups, businesses and residents to help reduce litter and keep public spaces clean.
- ❖ The City provides:
 - Gloves and high visibility vests
 - Trash bags
 - Hazardous waste collection materials
 - Refuse disposal
 - A sign posted at or near the spot thanking you, your business or your organization for keeping Tacoma clean.
- ❖ Volunteers will commit to:
 - Be safe during cleanups
 - Two cleanups per year
 - A two-year (or longer) participation in the program
 - Complete adopter report after each cleanup



Route 66 Tourism & Historic Preservation

- ❖ Route 66 Action Plan

 - ❖ Albuquerque, New Mexico

- ❖ Neon Sign Restoration through the Route 66 Corridor Preservation Program

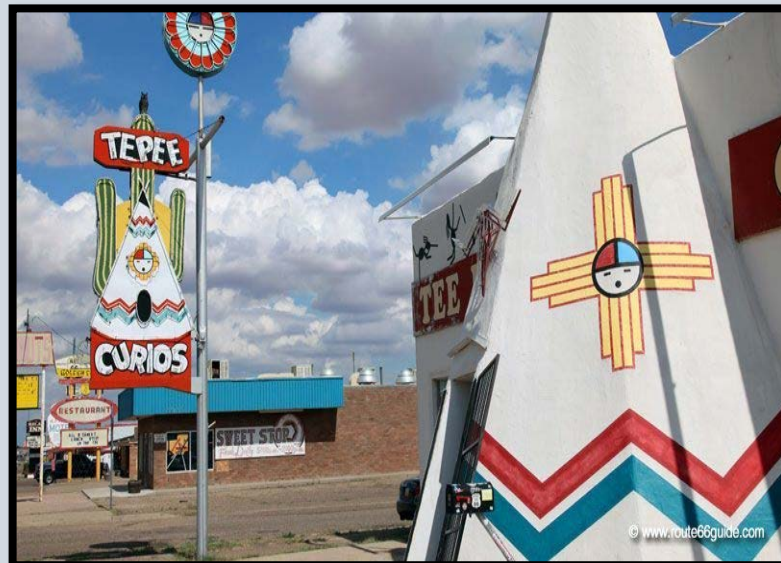
 - ❖ Tucumcari, New Mexico



Route 66 Action Plan

Albuquerque, New Mexico

- ❖ The vision for Route 66 in Albuquerque is a vibrant and rich experience for all generations with attractions that build upon the memories of the past, contribute to the present lives of locals and has an ever-evolving appeal that expands into the future.
- ❖ The Action Plan was created specifically to preserve the history of Route 66 and create concrete plans that will improve every aspect of the highway in Albuquerque. The plan goes in depth on several different policies that include keeping the iconic Route 66 era buildings and theme in order to assure its longevity.
- ❖ Corridor-wide investments are necessary throughout the Route 66 corridor in order to make Route 66 an attractive and thriving venue for doing business, recreating, dwelling, and shopping. The purpose of these improvements is to bring current infrastructure and services up to date and to create an environment that is attractive and usable to both residents and tourists.



Neon Sign Restoration and Preservation

Tucumcari, New Mexico

- ❖ The Route 66 Corridor Preservation Program was created by the National Parks Service and provides cost-share grant assistance to support the preservation of the most significant and representative historic Route 66 buildings, structures, road segments, and cultural landscapes in the eight states through which the route passes. The program funded the restoration of nine signs across New Mexico, three in Tucumcari in 2003.
- ❖ In February of 2020, Tucumcari, New Mexico adopted the Landmark Historic Sign Ordinance that specifically protects the old neon signs along Route 66. Under the new ordinance, Route 66 business owners can apply for their neon signs to be registered as a historic landmark. If accepted, perks of this include tourism promotion and a plaque with the designation.



Cindy Carlsson
www.ExplorationVacation.net

Neighborhood Bond Projects

- ❖ \$2.616 million was issued for the “Neighborhood Plan Initiative” in Proposition 1 under Streets through the 2016 bond election to support street, sidewalk, and thoroughfare improvement projects.
- ❖ The total funding is split among the four initial neighborhoods participating in the City and Potter County’s Neighborhood Planning Initiative: North Heights, Barrio, San Jacinto and Eastridge.
- ❖ **Each neighborhood has \$654,050.**
- ❖ These funds are allocated to priority projects by the neighborhood associations in coordination with city staff and the Neighborhood Plan Oversight Committee. Projects are prioritized through the annual action plans, also known as the Projects in Motion

Proposition #1 Purpose Statement

- ❖ *Proceeds from the sale of the Bonds will be used for: (i) acquiring, constructing, improving and maintaining streets, thoroughfares, alleyways and sidewalks within the City including related storm drainage improvements, traffic signalization and signage, street lighting, traffic management equipment, creek erosion, bridge and culvert improvements and utility relocations and the acquisition of land therefor; (ii) acquiring, constructing, improving, renovating, expanding and equipping public safety facilities; (iii) constructing and equipping library facilities in and for the City and the acquisition of necessary sites therefor; and (iv) paying issuance costs on the Bonds (see "THE BONDS" herein).*



Qualifying Project List

All projects must be located in the public right-of-way

- Alleys
- Bicycle Lanes and trails
- Gateways, Wayfinding & Signage
- Green Infrastructure
- Infrastructure and Utilities
- Landscaping & Plantings
- Lighting
- Sidewalks & Streetscape Improvements
- Traffic Calming
- Transit Infrastructure

Ineligible Projects (regardless of location in public right-of-way)

- Neighborhood welcome signs
- Gateway enhancements - Signage, lighting, art, archways
- Interactive public art or statues, monuments
- Public art on sidewalks, medians or unused portions of right-of-way
- Public restrooms/public welcome center
- Dog park and pet waste stations
- Wayfinding Signs



