

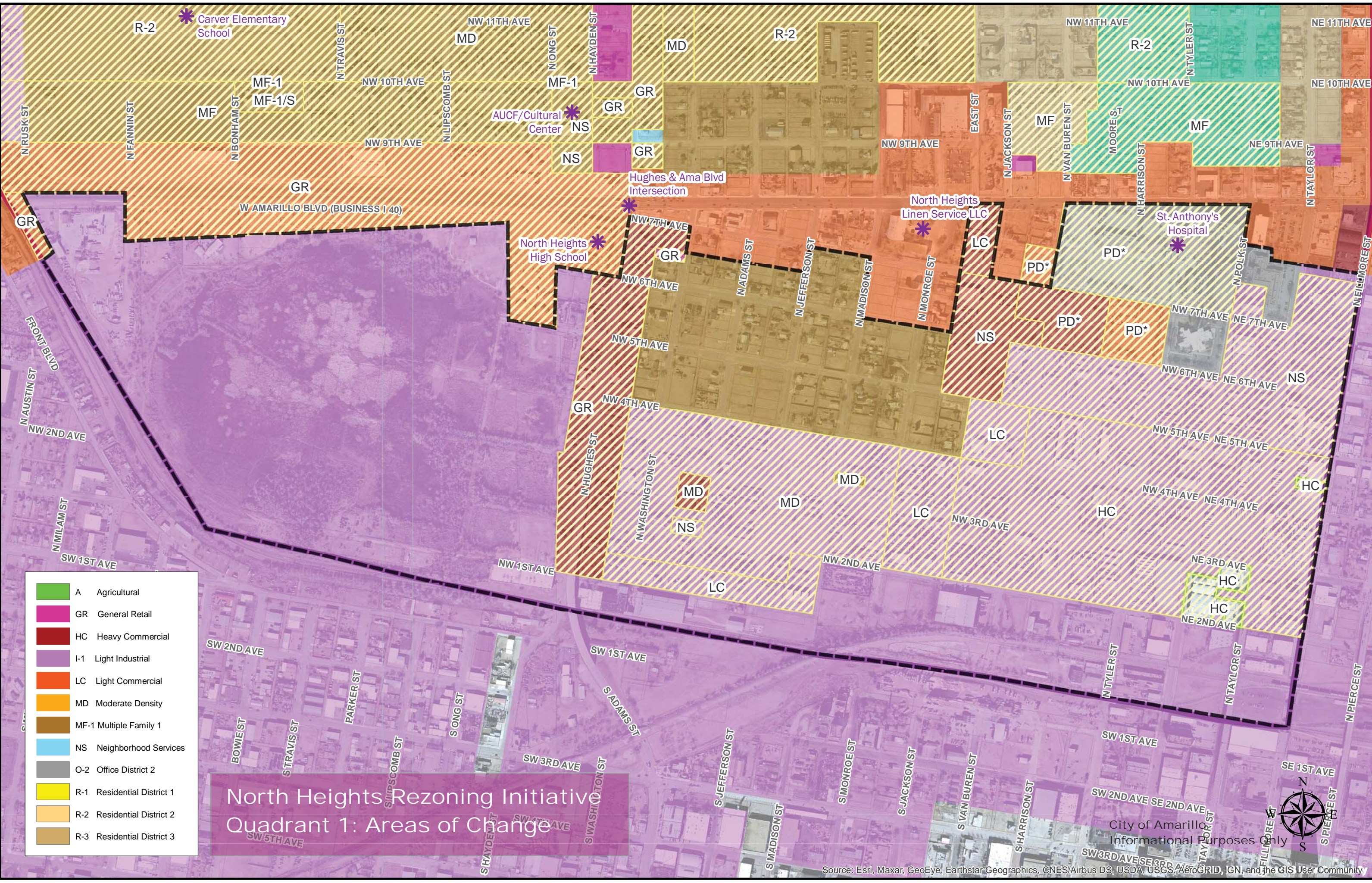
■	A	Agricultural
■	GR	General Retail
■	HC	Heavy Commercial
■	I-1	Light Industrial
■	LC	Light Commercial
■	MD	Moderate Density
■	MF-1	Multiple Family 1
■	NS	Neighborhood Services
■	O-2	Office District 2
■	R-1	Residential District 1
■	R-2	Residential District 2
■	R-3	Residential District 3

North Heights Rezoning Initiative Quadrant 1: Existing Zoning

City of Amarillo
Informational Purposes Only



Source: Esri, Maxar, GeoEye, Earthstar Geographics, CNES/Airbus DS, USDA, USGS, AeroGRID, IGN, and the GIS User Community



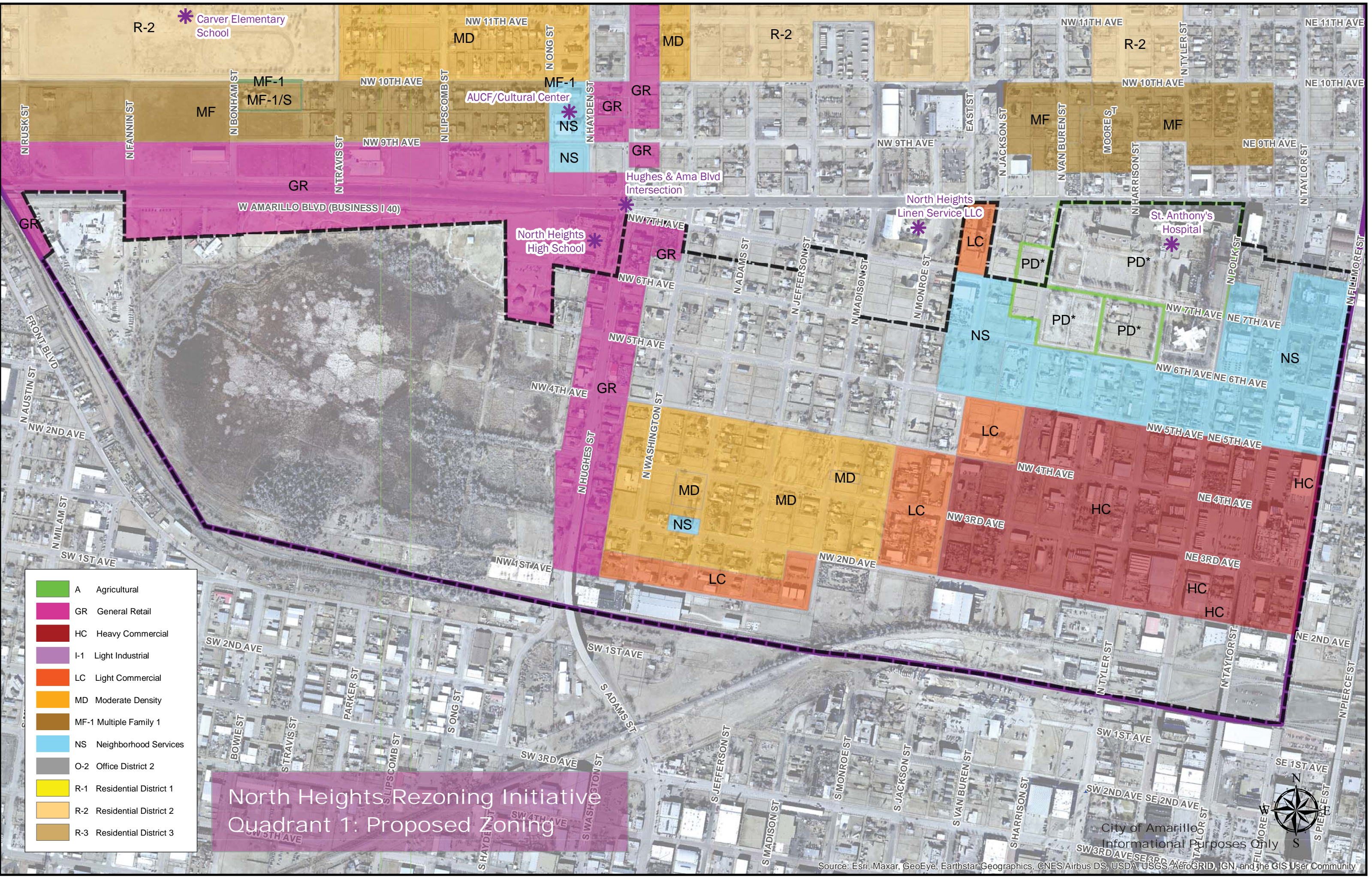
	A	Agricultural
	GR	General Retail
	HC	Heavy Commercial
	I-1	Light Industrial
	LC	Light Commercial
	MD	Moderate Density
	MF-1	Multiple Family 1
	NS	Neighborhood Services
	O-2	Office District 2
	R-1	Residential District 1
	R-2	Residential District 2
	R-3	Residential District 3

North Heights Rezoning Initiative
Quadrant 1: Areas of Change

City of Amarillo
 Informational Purposes Only



Source: Esri, Maxar, GeoEye, Earthstar Geographics, CNES/Airbus DS, USDA, USGS, AeroGRID, IGN, and the GIS User Community



North Heights Rezoning Initiative Quadrant 1: Proposed Zoning

- A Agricultural
- GR General Retail
- HC Heavy Commercial
- I-1 Light Industrial
- LC Light Commercial
- MD Moderate Density
- MF-1 Multiple Family 1
- NS Neighborhood Services
- O-2 Office District 2
- R-1 Residential District 1
- R-2 Residential District 2
- R-3 Residential District 3

Carver Elementary School

AUCF/Cultural Center

Hughes & Ama Blvd Intersection

North Heights Linen Service LLC

St. Anthony's Hospital

North Heights High School

W. AMARILLO BLVD (BUSINESS 140)

Comprehensive Plan

Future Land Use:

- General Commercial
- General Residential
- Industrial
- Parks - Recreation
- Rural

North Heights Rezoning Initiative

Quadrant 1: Future Land Use

City of Amarillo
 Informational Purposes Only



Source: Esri, Maxar, GeoEye, Earthstar Geographics, CNES/Airbus DS, USDA, USGS, AeroGRID, IGN, and the GIS User Community