

■	A	Agricultural
■	GR	General Retail
■	HC	Heavy Commercial
■	I-1	Light Industrial
■	LC	Light Commercial
■	MD	Moderate Density
■	MF-1	Multiple Family 1
■	MH	Manufactured Home
■	NS	Neighborhood Services
■	O-2	Office District 2
■	R-1	Residential District 1
■	R-2	Residential District 2
■	R-3	Residential District 3

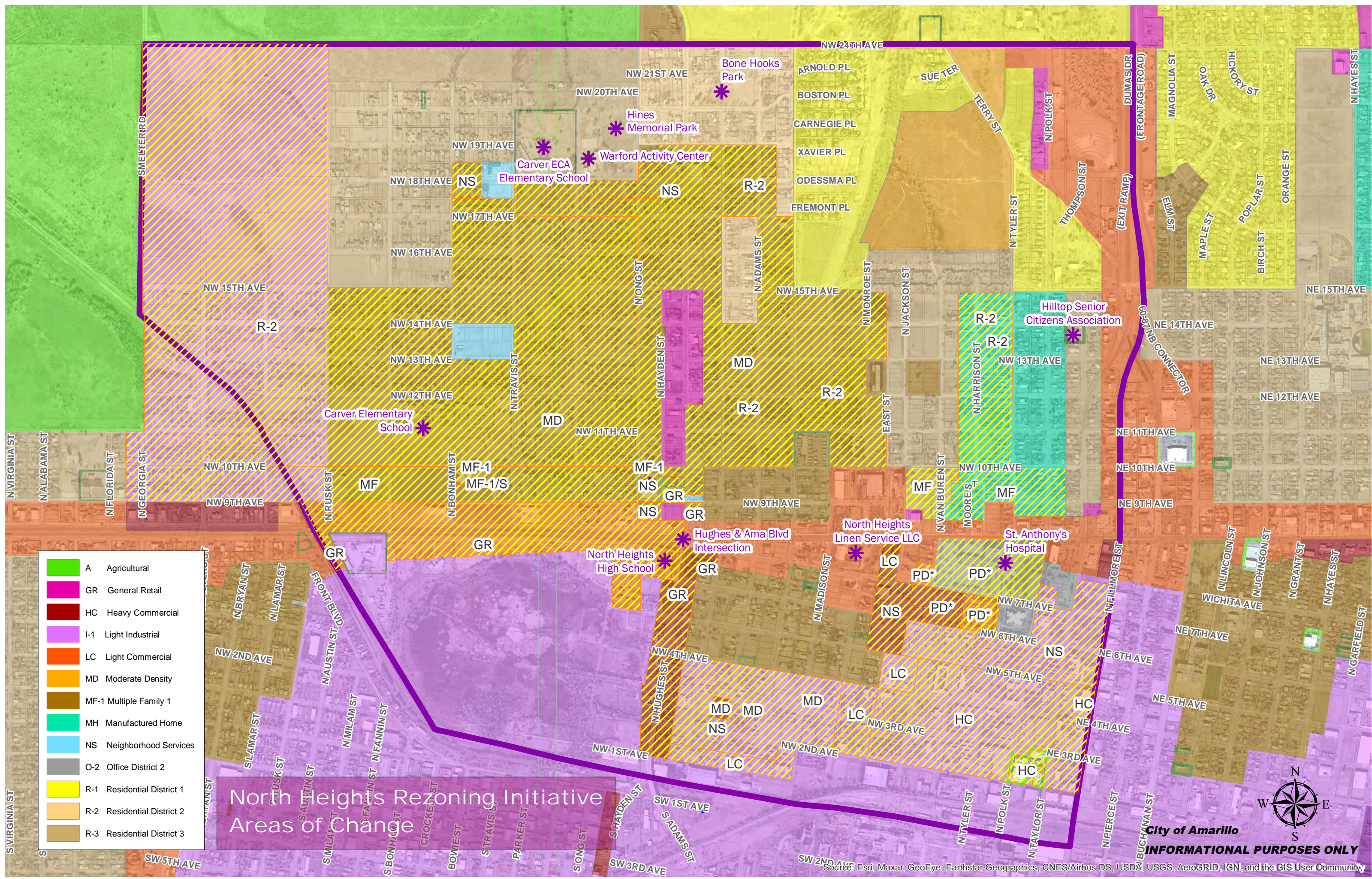
North Heights Rezoning Initiative

Existing Zoning



City of Amarillo
INFORMATIONAL PURPOSES ONLY

Source: Esri, Maxar, GeoEye, Earthstar Geographics, CNES/Airbus DS, USDA, USGS, AeroGRID, IGN, and the GIS User Community



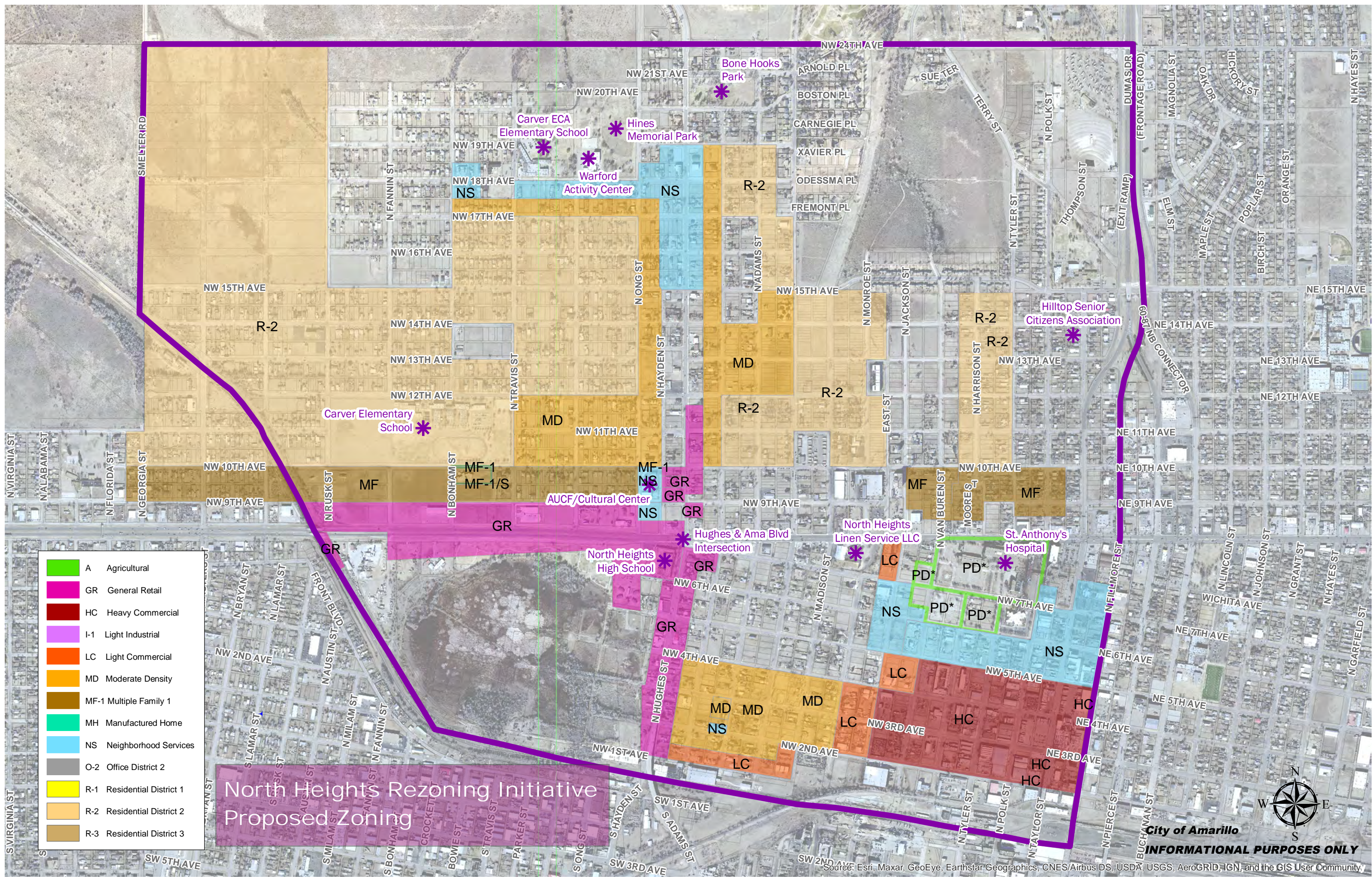
■	A	Agricultural
■	GR	General Retail
■	HC	Heavy Commercial
■	I-1	Light Industrial
■	LC	Light Commercial
■	MD	Moderate Density
■	MF-1	Multiple Family 1
■	MH	Manufactured Home
■	NS	Neighborhood Services
■	O-2	Office District 2
■	R-1	Residential District 1
■	R-2	Residential District 2
■	R-3	Residential District 3

North Heights Rezoning Initiative Areas of Change



City of Amarillo
INFORMATIONAL PURPOSES ONLY

Source: Esri, Maxar, GeoEye, Earthstar Geographics, CNES/Airbus DS, USDA, USGS, AeroGRID, IGN, and the GIS User Community

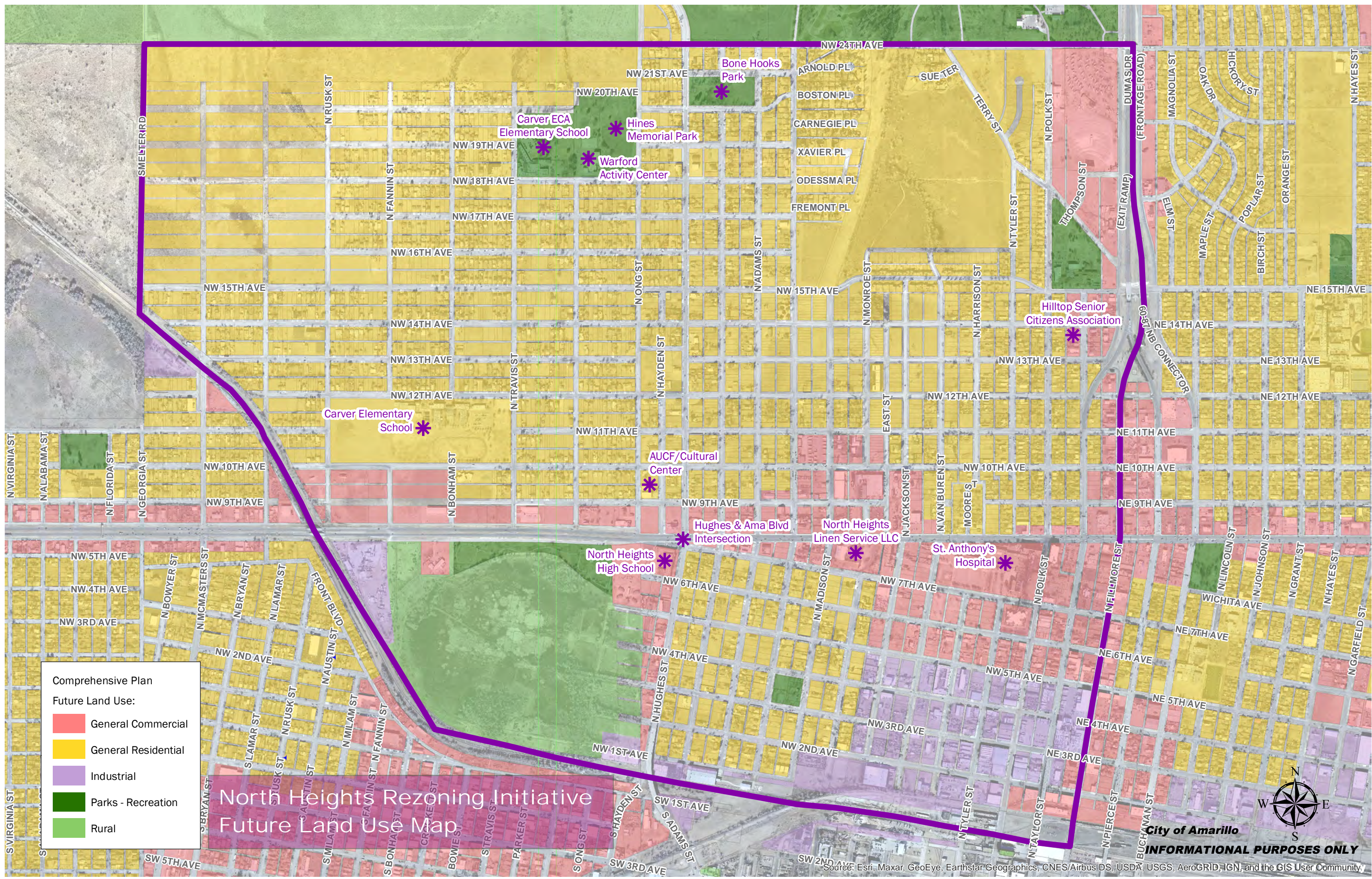


■	A	Agricultural
■	GR	General Retail
■	HC	Heavy Commercial
■	I-1	Light Industrial
■	LC	Light Commercial
■	MD	Moderate Density
■	MF-1	Multiple Family 1
■	MH	Manufactured Home
■	NS	Neighborhood Services
■	O-2	Office District 2
■	R-1	Residential District 1
■	R-2	Residential District 2
■	R-3	Residential District 3

North Heights Rezoning Initiative Proposed Zoning

City of Amarillo
INFORMATIONAL PURPOSES ONLY

Source: Esri, Maxar, GeoEye, Earthstar Geographics, CNES/Airbus DS, USDA, USGS, AeroGRID, IGN, and the GIS User Community



Comprehensive Plan
 Future Land Use:

- General Commercial
- General Residential
- Industrial
- Parks - Recreation
- Rural

North Heights Rezoning Initiative Future Land Use Map

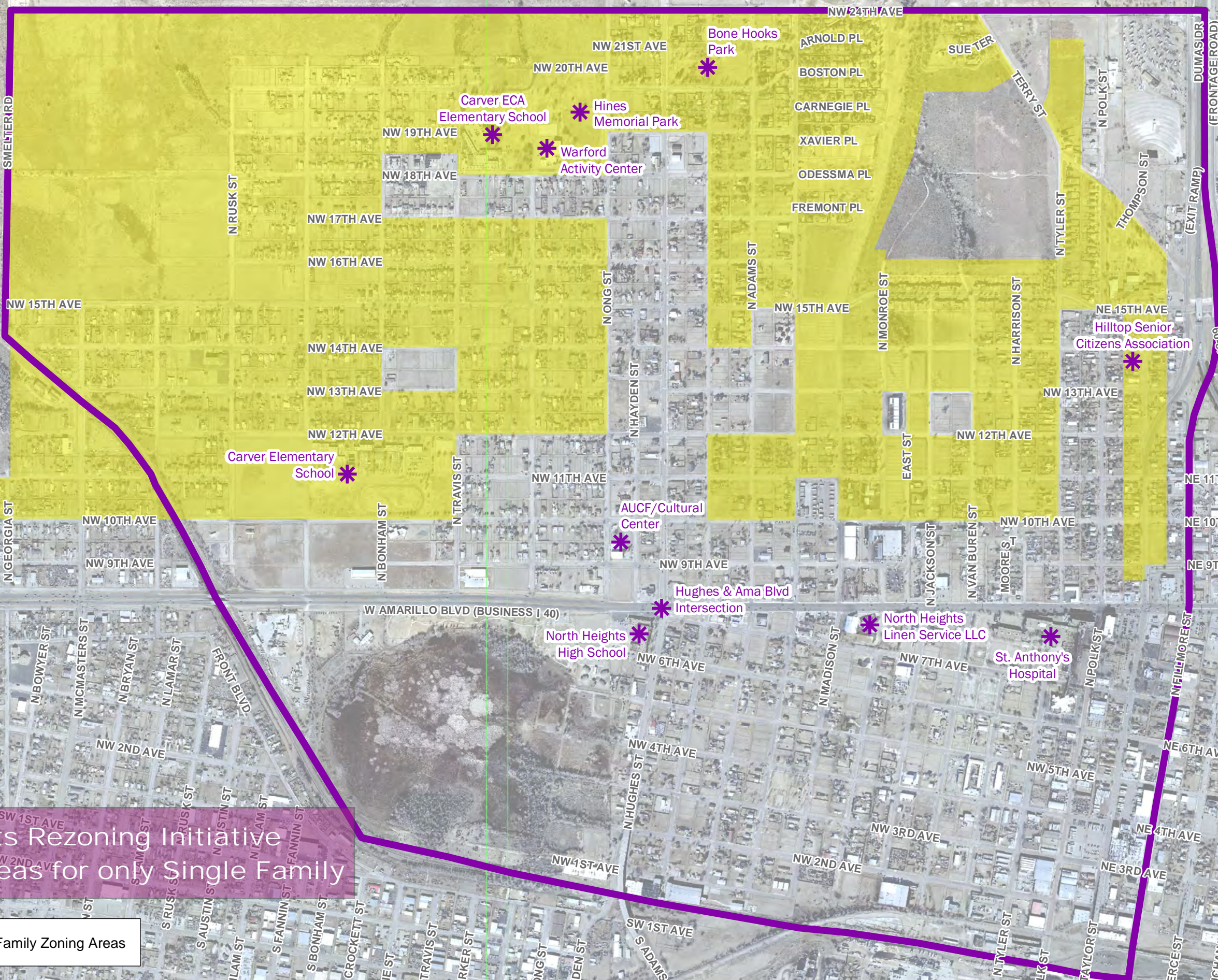


City of Amarillo
INFORMATIONAL PURPOSES ONLY

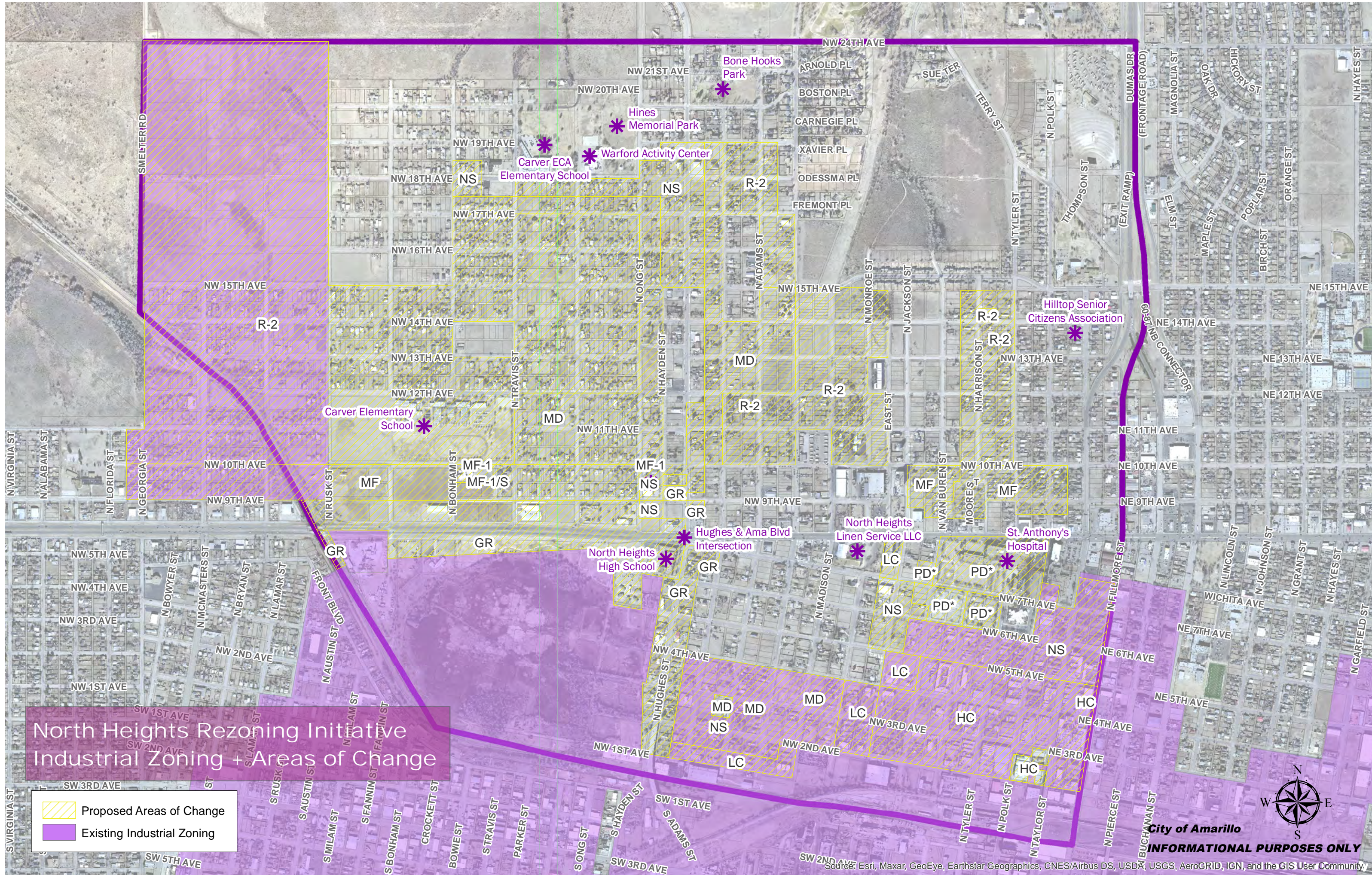
Source: Esri, Maxar, GeoEye, Earthstar Geographics, CNES/Airbus DS, USDA, USGS, AeroGRID, IGN, and the GIS User Community

North Heights Rezoning Initiative Proposed Areas for only Single Family

Proposed Single Family Zoning Areas



Source: Esri, Maxar, GeoEye, Earthstar Geographics, CNES/Airbus DS, USDA, USGS, AeroGRID, IGN, and the GIS User Community



North Heights Rezoning Initiative Industrial Zoning + Areas of Change

Proposed Areas of Change
 Existing Industrial Zoning



City of Amarillo
INFORMATIONAL PURPOSES ONLY

Source: Esri, Maxar, GeoEye, Earthstar Geographics, CNES/Airbus DS, USDA, USGS, AeroGRID, IGN, and the GIS User Community