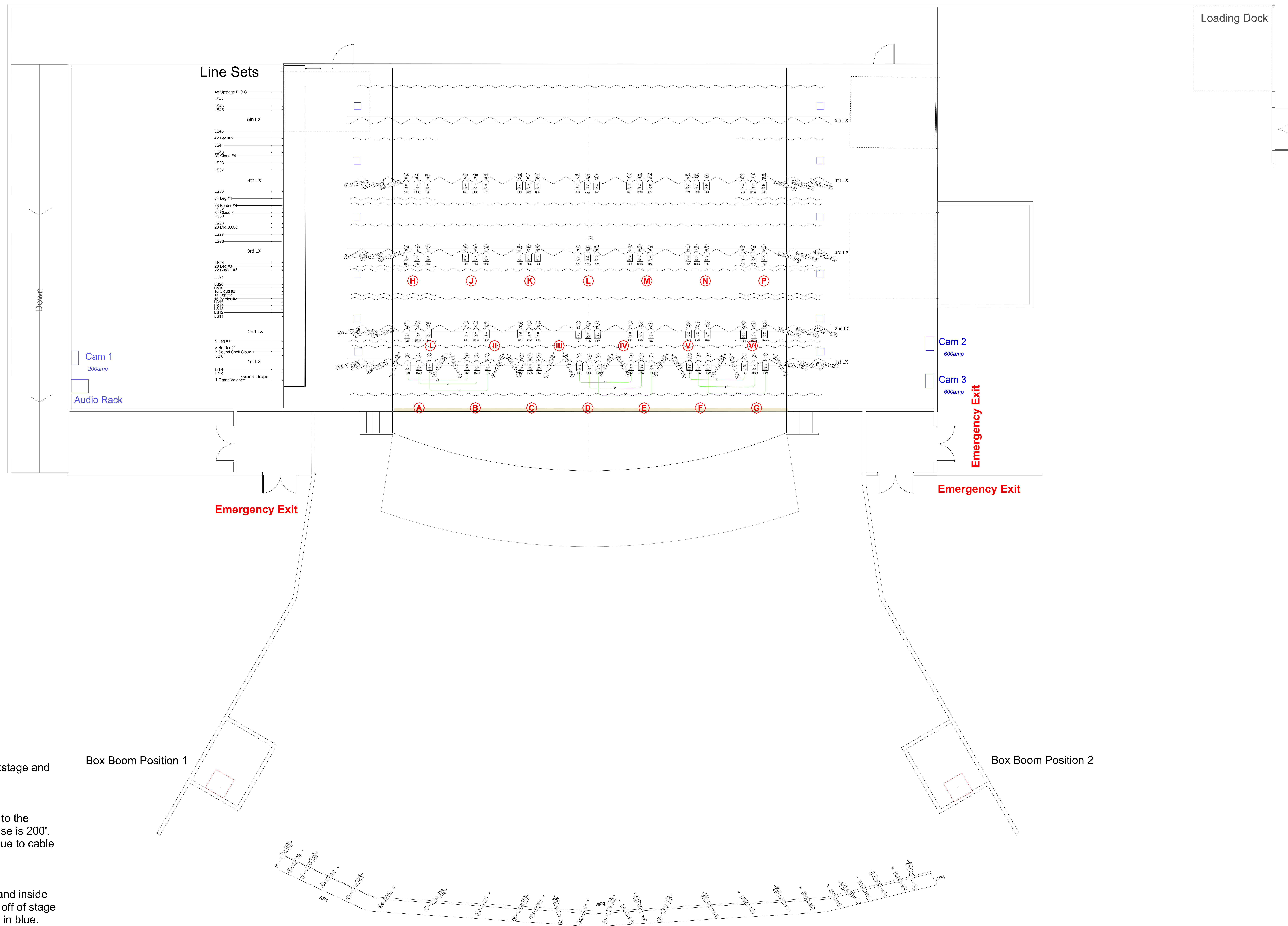


| Instruments    | Num In Inventory | Used | Remaining |
|----------------|------------------|------|-----------|
| Source 4 10deg | 24               | 14   | 10        |
| Source 4 19deg | 35               | 12   | 23        |
| PAR 64 WFL     | 84               | 84   | 0         |
| Source 4 36deg | 37               | 14   | 23        |
| Source 4 26deg | 37               | 24   | 13        |

| Legend |                   |
|--------|-------------------|
|        | Focus Color Inlay |
|        | Unit Number       |
|        | Channel           |
|        | Circuit Number    |



**Groundplan and Light Plot**  
 Designed by Jaclyn Redmon & Nicholas Peacock  
 Drawn by Nicholas Peacock 02/27/2013  
 Scale: 1/4"=1'

**Amarillo Civic Center Auditorium**

- General Notes**
- Additional Space**  
Any part of the facilities that is not in the theatre (backstage and storage areas) are in grey.
  - Sound & Light Board Positions**  
The distance from the down center edge of the apron to the sound and light board positions at the back of the house is 200'. A 250' snake must be used to reach these positions due to cable dressing requirements.
  - Cam Boxes & Floor Pockets**  
Note the cam boxes and the audio rack on stage left and inside the roll up stage right. Also note the floor pockets just off of stage right and stage left. All of the above items are marked in blue.
  - Emergency Exits**  
Note the emergency exits marked on the groundplan in red.
  - Layer Information**  
Note that there are layers not shown in the normal plot view, but that add additional information if required. For non Vectorworks users, contact the production office for additional information.