

## WEEK 2

Read this weeks notes BEFORE continuing the project

This week is about continuing adding to add information to your Google Earth Genealogy Project. Did you realize you can download digital historical maps and import them into Google Earth? All through my first few books we constantly overlaid old maps (we had them re-printed on transparencies) on top of modern ones to get a sense of what was there “then and now” for comparison – today's lesson is the digital version of overlaying an old map on top of a newer one for comparison.

This is where it can get REALLY exciting in combining your genealogical research with Google Earth. With Google Earth and using what is called *georeferencing* to adjust the digitized historical map to layer the historic map over a modern map (thank you Google Earth satellite imaging). What this means for you is that you'll be able to lay an old map (one of my favorites to have you start out with would be an easily available Sanborn Fire Insurance Map) over a modern map, stretch it to FIT and toggle it on/off to see how things have changed.

Once you locate an older map that has been digitized then you want to see if it is in the file format that Google Earth will need. You are looking for files with the extension **.kml** or **.kmz** **KML/MKZ files** contain latitude and longitude coordinates and 3D model data. These files can be opened by Google Earth or unzipped with a compression utility like WinZip or MacZip.

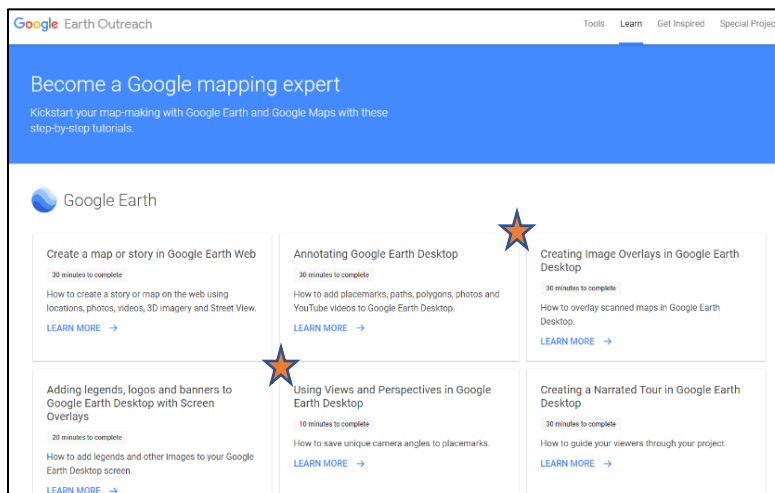
Your recommended tutorials for this week are:

Once again, go to **Google Earth Outreach**

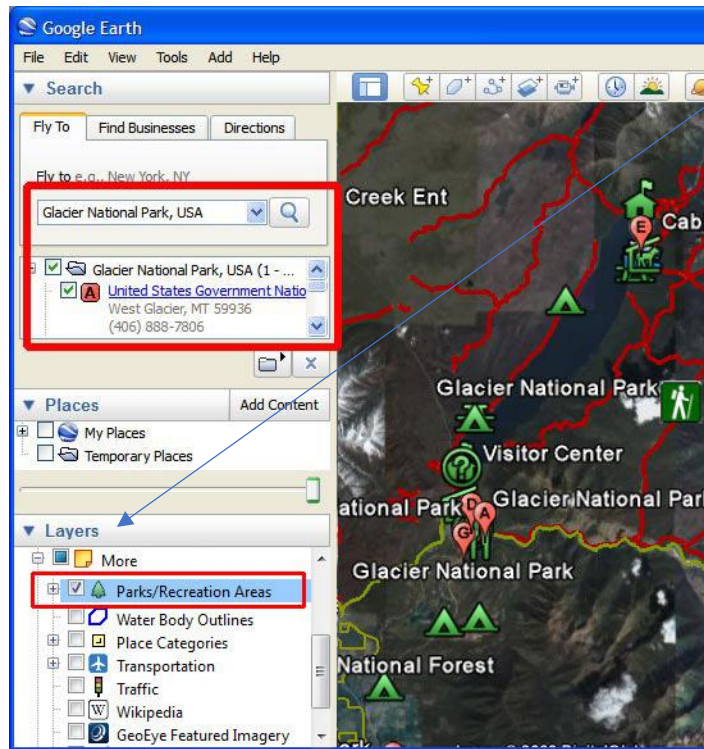
Note: today, you need to Download Google Earth **Pro** (Free) like I did while watching the tutorial #1 just below (so that you can access the **Layers Palette**)

### Tutorials:

1. **Creating Image Overlays in Google Earth Desktop** (30 mins to complete) ★
2. Skip the tutorial Adding Legends, logos and banners to Google Earth Desktop with Screen Overlays unless you want to learn how to “code” html. Skip! Following the next 3 images below, you will find the next tutorial I do want you to do.



Once I installed and opened Google Earth Pro, I was able to see the LAYERS



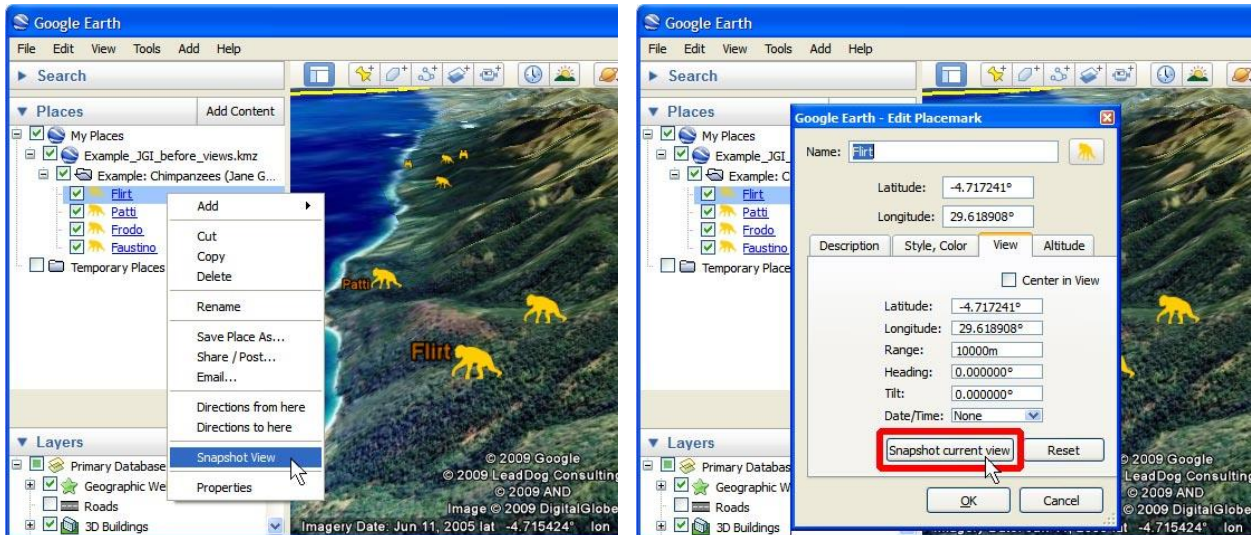
My toolbar was at the top of my screen:

Overlay an image  
or scanned map.



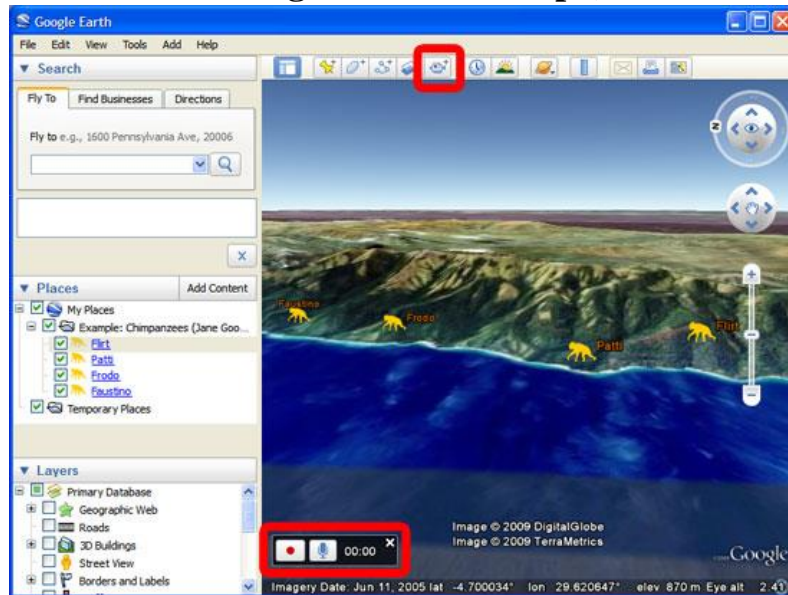
### 3. Tutorial: Using Views and Perspectives in Google Earth Desktop (10 mins to complete)

This are examples of Snapshot Views:



These last few Tutorials are wonderful for those who want to develop the family Google Earth Project even more...

#### 4. Creating a Narrated Tour in Google Earth Desktop (30 mins to complete)



#### 5. Packaging Content in a KMZ file (10 mins to complete)

KMZ files are very similar to [ZIP](#) files. They allow you to package multiple files together, and they compress the contents to make downloading faster. This allows you to bundle images along with your KML file if you want.

This little tutorial will be especially important if you want to save JPEG images (a pic of a headstone for example) in your KMZ file.

#### 6. Storytelling with maps using Tour Builder (60 mins to complete)

**NEXT is a page to print out of wonderful Google Earth Shortcuts:**

# Use keyboard shortcuts to navigate in Google Earth

Below you'll find a list of keyboard and mouse shortcuts to navigate in the 3D viewer. Learn more about navigating in Google Earth.

**Tip:** To move more slowly, hold down **Alt**, then do the keyboard shortcut.

| <b>Action</b>                | <b>Shortcut (Windows &amp; Linux)</b>            | <b>Shortcut (Mac)</b>               |
|------------------------------|--|-------------------------------------|
| Move left                    | Left arrow                                       | Left arrow                          |
| Move right                   | Right arrow                                      | Right arrow                         |
| Move up                      | Up arrow   | Up arrow                            |
| Move down                    | Down arrow                                       | Down arrow                          |
| Rotate clockwise             | Shift + Left arrow                               | Shift + Left arrow                  |
| Rotate counter-clockwise     | Shift + Right arrow                              | Shift + Right arrow                 |
| Tilt up                      | Shift then click and drag down                   | Shift + Down arrow                  |
| Tilt down                    | Shift + Up arrow<br>Shift then click and drag up | Shift + Up arrow                    |
| See first-person perspective | Ctrl then click and drag                         | ⌘ then click and drag               |
| Zoom in                      | +  | +                                   |
| Zoom out                     | -  | -                                   |
| Zoom plus automatic tilt     | Right-click and drag up or down                  | Ctrl then click and drag up or down |
| Stop current motion          | Spacebar   | Spacebar                            |
| Reset to north-up view       | n  | n                                   |
| Reset to top-down tilt       | u  | u                                   |
| Center Earth                 | r  | r                                   |
| Show/hide Overview window    | Ctrl + m   | ⇧⌘ + m                              |

Working with KML/KMZ file formats:

Try this

1. Log in to Google My Maps
2. Select and open the map you want to **export**
3. To the right of the map's title, click on the icon: Three Vertical Dots
4. Select: **Export to KML/KMZ**
5. Under the heading, Export to KML/KMZ, click on the drop down menu and locate "Entire Map"
6. Select which layer you want to **export**.