



Public Health
Prevent. Promote. Protect.
Amarillo

Amarillo Department of Public Health Flu Surveillance 2019-2020

Flu Season

Week Ending	10/26	11/2	11/9	11/16	11/23	11/30	Season Total
MMWR Week	43	44	45	46	47	48	Total
Flu A	4	1	17	17	42	30	156
Flu B	33	20	28	22	27	60	264
ILI*	342	370	296	324	405	243	2896
Undifferentiated**	3	1	0	0	1	0	12
Weekly Totals	382	392	341	363	475	333	

*Influenza Like Illness (ILI) is defined as a patient with fever $\geq 100^{\circ}$ F, cough and/or sore throat who is either not tested for flu or is negative on result.

**Testing did not differentiate Flu A or Flu B.

2019-2020

Fig. 1 YTD Flu Testing By Percent

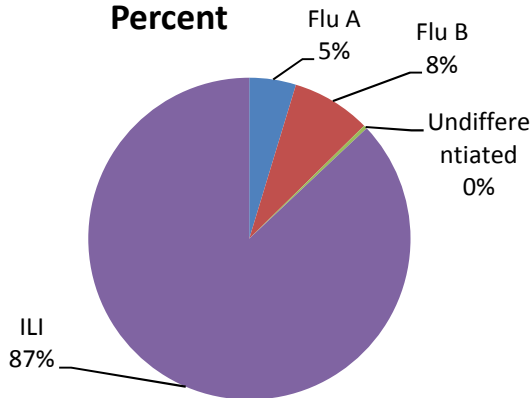


Fig. 2 YTD Flu A & B Comparison

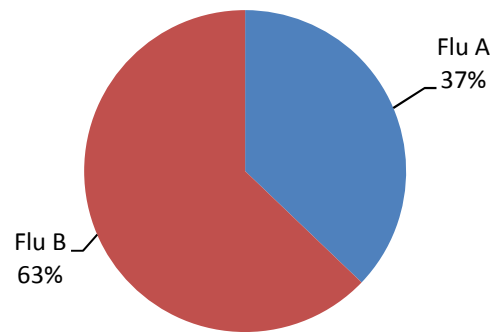
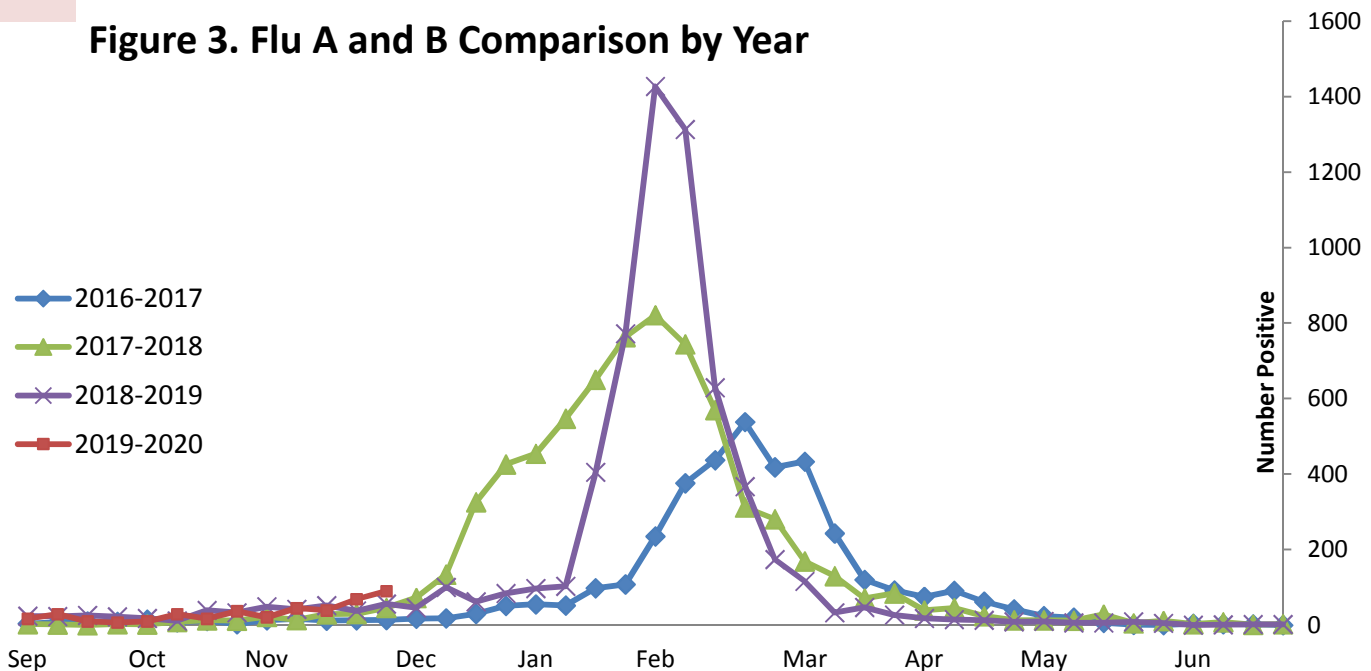


Figure 3. Flu A and B Comparison by Year



Historical Trends

Figure 4. Flu A Comparison by Year

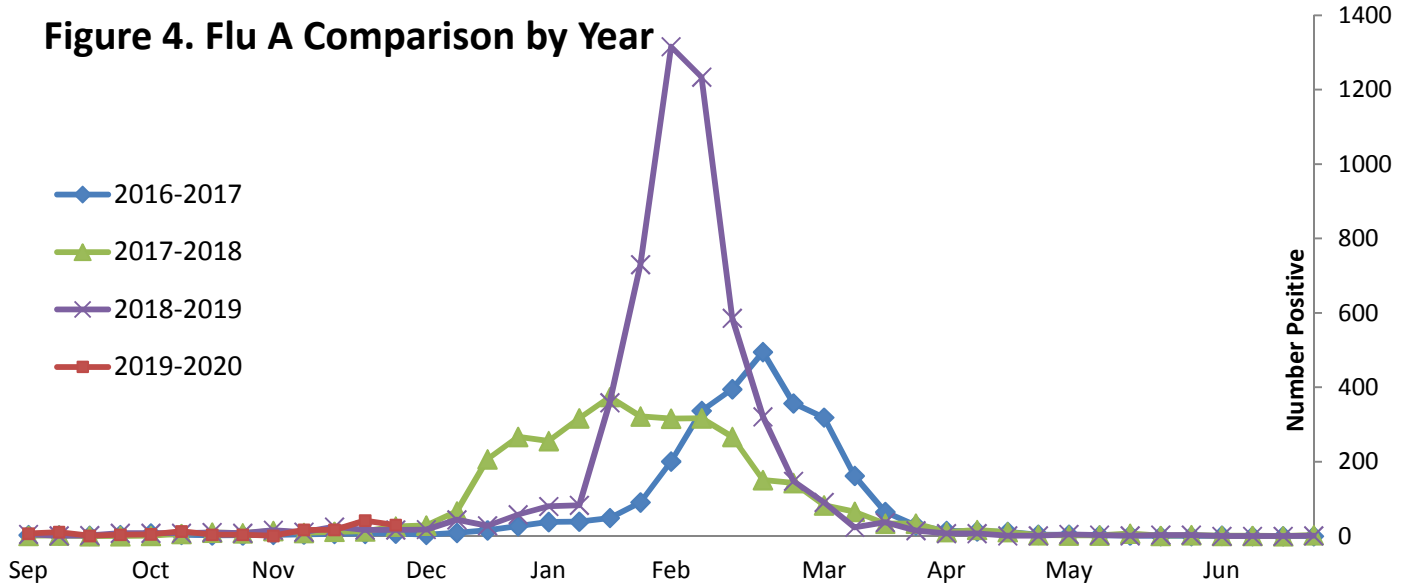


Figure 5. Flu B Comparison by Year

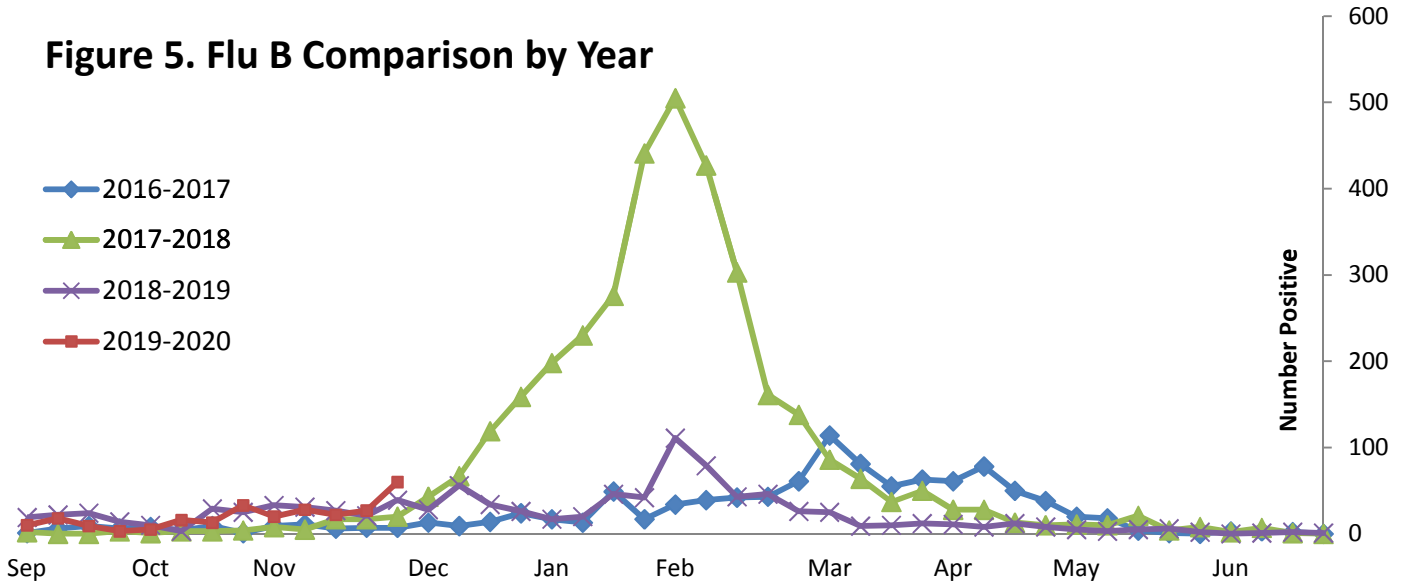


Figure 6. ILI Comparison by Year

