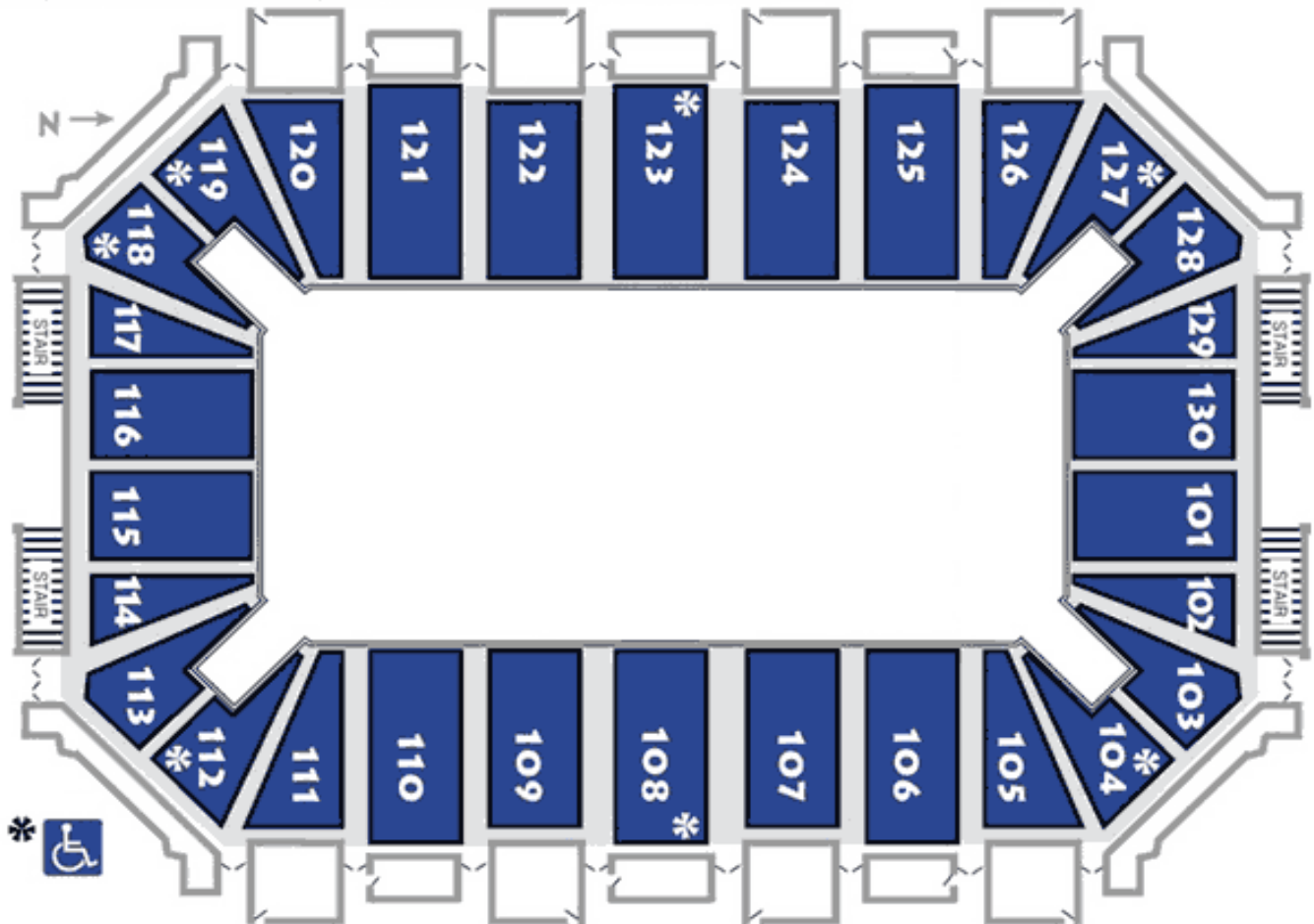


COLISEUM

AMARILLO CIVIC CENTER COLISEUM



Amarillo Civic Center Coliseum
401 S. Buchanan
Amarillo, Texas 79101



The Amarillo Civic Center Complex Coliseum was constructed in 1969 as the largest venue inside the Amarillo Civic Center Complex. The bowl seats 4,826 with an additional 50 accessible seats available, and another 1800 possible capacity on the floor. The Coliseum is capable of hosting a wide variety of events including floor conversions from standard concrete, dirt, ice rink, arena turf, and basketball floor. The Coliseum is surrounded by a full service concourse with (6) six concession stands and (4) main entrances. Spacious concourses on all sides offer an ample amount of vendor space for trade shows, concerts, sporting events, and much more. Room height from floor to ceiling is 50' 10" with 38'10" of open space from the floor to the lower steel. Underground ramp access to the Coliseum is available on the east side of the facility.

The Amarillo Civic Center Complex Coliseum resides in the heart of downtown Amarillo.

Amarillo Civic Center Coliseum Technical Specifications

Revised 10/1/2015

General Information

FLOOR DIMENSIONS: 90' x 190'

LOW STEEL HEIGHT: 38' 10" From floor

HIGH STEEL HEIGHT: 50' 10" From floor

BETWEEN STEEL (North to South): 47'

HOUSE SPEAKERS: All speakers are above the low steel.

Z-BAR: Runs North to South between steel @ 50' from floor.

CATERING AREA: Upstage Right just off NW hallway, labeled as the HEADLINER ROOM

PRODUCTION OFFICE: Upstage Right just off NW hallway, next to the HEADLINER ROOM

DRESSING ROOMS: Upstage Right along NW hallway.

ACCESS TO FLOOR: Through vomitory on North West corner of Coliseum, down a 200' hallway. Vomitory entrance to the Coliseum floor listed in the hallway diagram in the tech packet.

INTERCOM SYSTEM: throughout Coliseum. Clear Com 2-channel headset system

POWER AVAILABLE:

4 -400 AMP Three Phase -25' from upstage right (NW corner of Coliseum)

1 -200 AMP Three Phase -25' from upstage right (NW corner of Coliseum)

All Above – 4.0 Cam Lock hook-ups.

1-100 AMP Three Phase –25' from upstage right (Must be run under roll-up door)

Bare Tail Tie – In.

1 -600 AMP THREE PHASE -200' from downstage right (SW corner of Coliseum)

Bare Tail Tie – In.

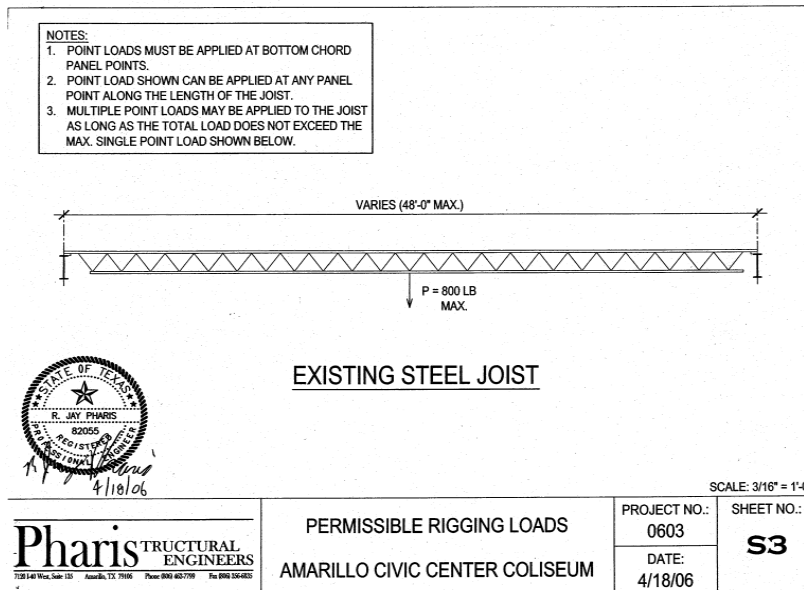
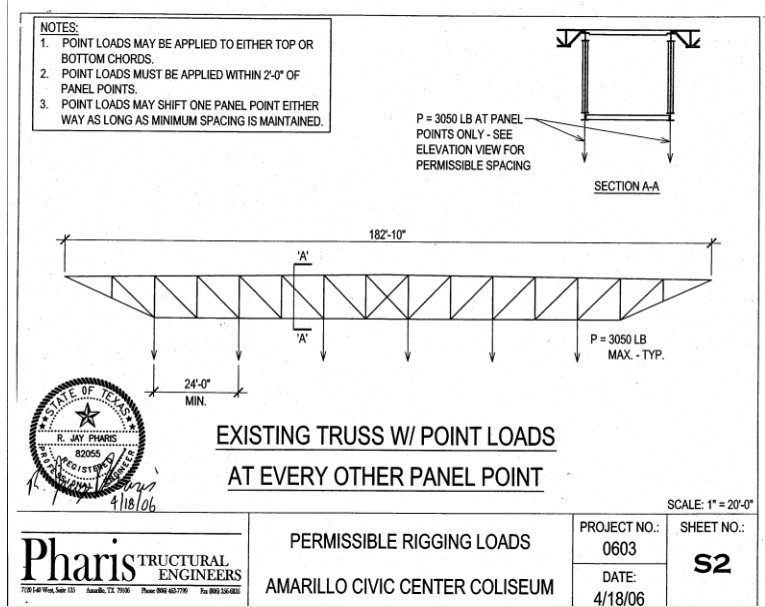
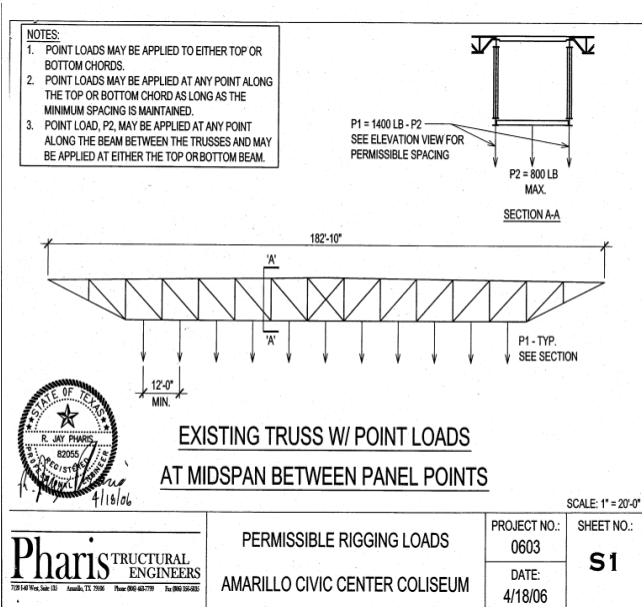
Structural Steel Load Limits

3063 lbs. per bridle, main steel to main steel 1500 lbs. per point dead hung from main steel

800 lbs. maximum load per point from Z-Bar

20 lbs. per square foot roof live load

12 lbs. per square foot roof safe load



Lighting

HOUSE LIGHTS:

LED lighting for the entire coliseum

Lighting is not dimmable, but various sections can be switched on and off as needed.

Control is on the Upper Concourse, on the same level with follow spots.

FOLLOW SPOTS:

6 -Xenon Super Trooper 2000 watt

Coliseum Floor

CONCRETE LAGGING: **Absolutely NO lagging** is allowed on Coliseum floor due to underlying ice floor pipes. Inserts have been distributed on the floor and may be utilized as needed.

LOADING: The load in/out point for the Coliseum area is located on east side of the Facility at entrance #5. The load in point is a 196 foot long incline ramp that can accommodate up to two (2) tractor trailer trucks at a time. Items must be off loaded by forklift or manual labor and pushed 216 feet to the coliseum floor. Hallway and height dimensions can be seen in the Dressing Room diagram also listed in this tech pack.

ICE FLOOR COVERING: When necessary, the ice surface can be covered with Polar Floor to accommodate other events. Please check with the Production Manager if you have any questions.

STAGING: *Stageright* portable stage constructed in 4' x 8' sections. Deck finish is interchangeable between carpeted and poly surfaced Customary stage height is 48" – 60". Dimension capability is 4'x8' up to 60'W x 48'D with the ability to add a 8' x 24' thrust.

SCOREBOARD & GRAPHIC DISPLAYS: The Coliseum is equipped with a scoreboard, graphic message display board, and dual penalty clocks, on both the north and south ends of the room. The boards are permanently fixed in position at the upper concourse level, just over the seating areas. Scoreboard and Display features are as follows.

Scoreboards

- 14 feet wide x 6 feet 10 inches tall.
- Double digit **Home** and **Guest** score counters.
- (4) period/quarter indicator lights.

- Interchangeable lower panels for specific Hockey, Football, or Basketball information.
- Scoreboard controller is a Daktronics All Sports series 5000 console controller.

Message Displays

- Message Board Dimensions are approximately 14 feet wide x 6 feet 10 inches tall.
- Boards are Daktronics LED 10mil Video Boards 512 pixels wide by 288 pixels down
- DMP 8000 Daktronics player / processor
- Displays can support 1080dpi

The Amarillo Civic Center Complex **does not** create the images for these displays. All display images are the responsibility of the client and are required to be submitted (5) days prior to an event.

Technical services are required to run any images on the display boards during an event. Standard rates will apply.

Sound

AUDIO SYSTEM: In-house audio system available upon request. Center Technician required.

Audio system consists of:

Console: Soundcraft GB4 16 channel

Amplification: (9) QSC CX12 600W amplifiers

(1) 600W QSC amplifier (subs)

Speakers: (12) EV FRX-940 full range speakers evenly dispersed to cover grand stands

(12) EV PI Matrix Full range speakers evenly dispersed directly over floor for floor seating coverage

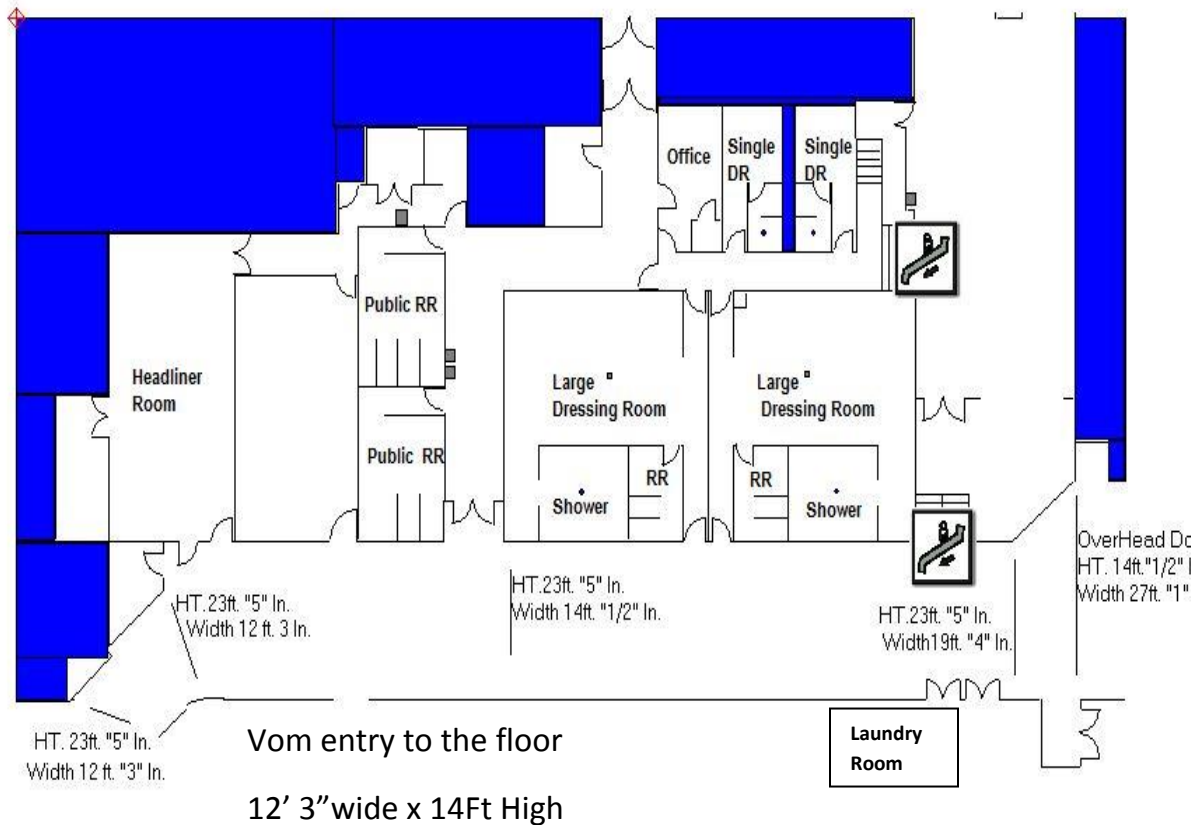
(2) Yamaha dual 18 inch subs

Dressing Rooms

The Civic Center Coliseum has two (2) large dressing room areas and two (2) smaller single dressing rooms. All dressing rooms come equipped with toilets, lavatories, and shower facilities.

All dressing rooms are equipped with one (1) television monitor for viewing the Coliseum show floor, or local basic cable.

The lower dressing room area also has a small production office, which can also be use as a quick change room, and a larger Headliner Room available for various uses. Below you will see a diagram showing the area layout and the hallway the runs from the loading doors to the Coliseum Floor.



Cliff McElhanev
Production Manager
806-378-3088
cliff.mcelhanev@amarillo.gov

William Weatherholt
Asst. Production Manager
806-378-9346
willian.weatherholt@amarillo.gov

Daniel Meggers
Asst. Production Manager
806-378-4221
Daniel.meggers@amarillo.gov

Amarillo Civic Center Coliseum

Dressing Rooms:

Floor Level NW
Vom -
"A", "B" = 8'x10'
+Toilets/Shower
"C", "D" = 29'x18'
+T/S
Check availability of "C"

Upper Level NW
Vom -
(If Auditorium not in use)
E, F, G, H = 8'x10' +T/S
I = 20'x15'+T/S,
J = 20'x15'+T/S,
K = 30'x17'+T/S

Other Rooms:

Floor Level NW
Vom-
Production Office 1:
9'x12'

"Old Headliner Room"- Catering:
38'x18'

Floor Level NW
Vom-
Conference Room M:
22'x30'

Power: 1 - 600 amp 3 phase (4.0 Cam) this splits into 2 - 300 amp 3 phase
1 - 200 amp 3 phase (4.0 Cam)
2 - 300 amp 3 phase
(Bare-tail tie in)

Note: 4' fire lanes around stages are required

Stage Positions:
Distance to Back

Typical Concert Stage: 60'
Stage: 60' x 48' Stageright Stage
Adjusts from 48" to 78"

Main Beam Trusses:
Low Steel 38' 10" from floor,
High Steel 50' 10" from floor,
High Z bar supports runs North and South and is

47' Between Low Steel

See page 2 for individual steel specs

