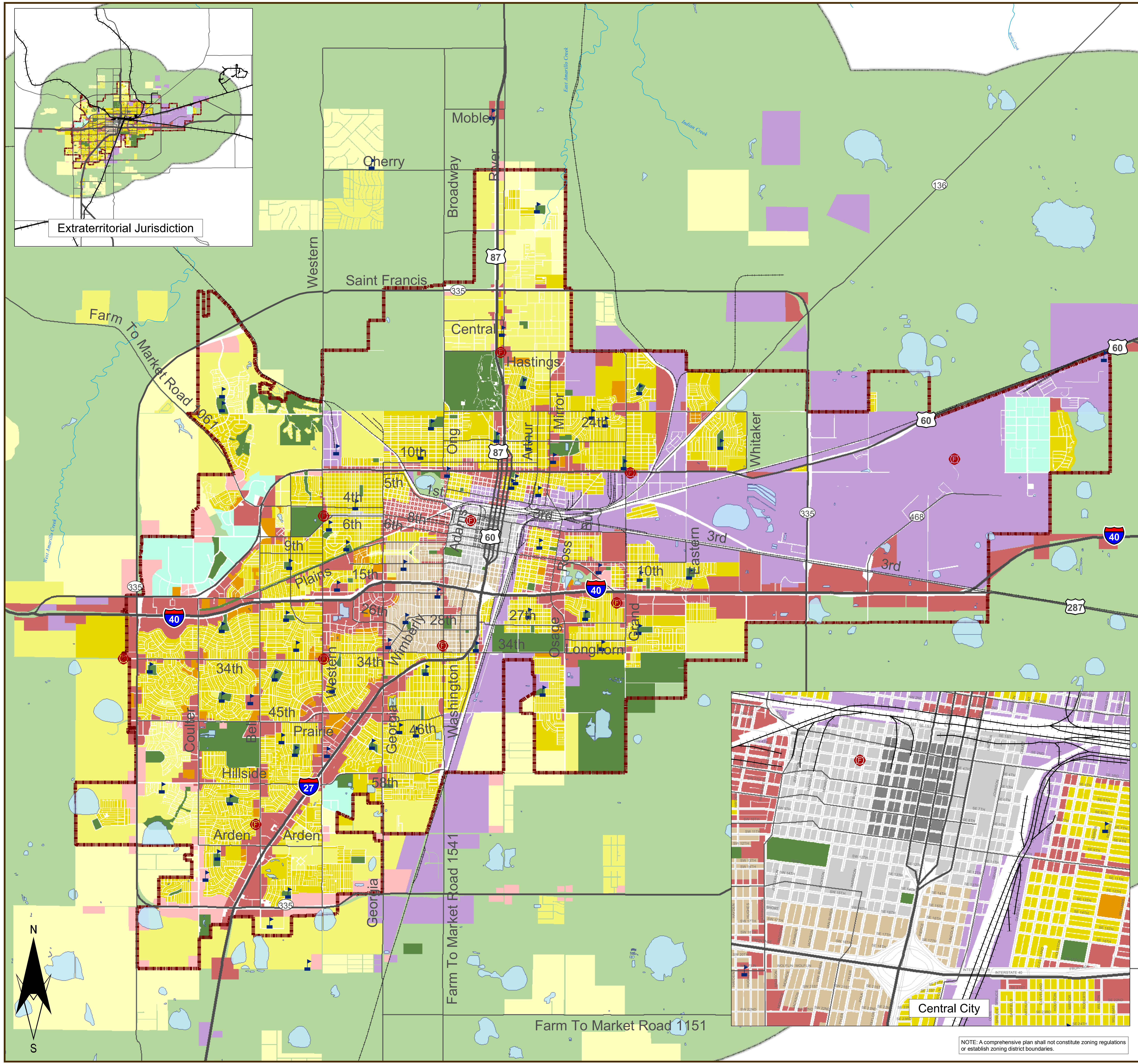


Map 2.1:

FUTURE LAND USE AND CHARACTER



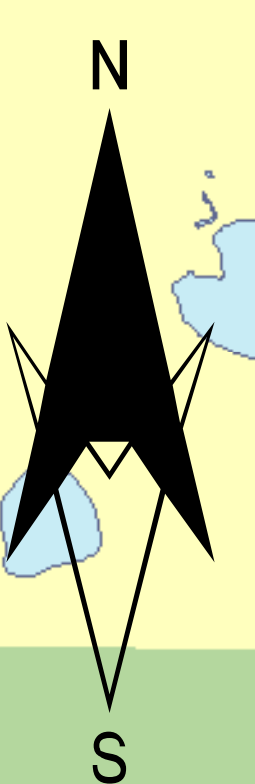
Extraterritorial Jurisdiction

Legend

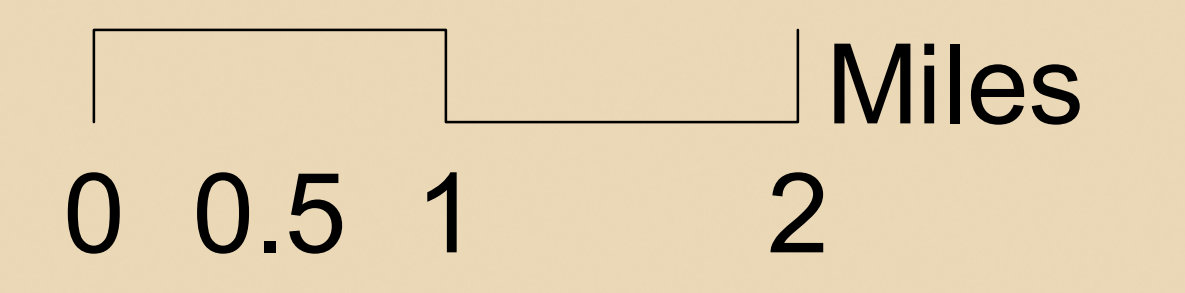
- Urban Center
- Urban
- Neighborhood Conservation
- Multi-Family Residential
- General Residential
- Suburban Residential
- Estate Residential
- Parks-Recreation
- General Commercial
- Suburban Commercial
- Business Park
- Industrial
- Rural

Boundaries and Facilities

- City Limits
- ETJ (5-mile)
- Streams and Water Bodies
- Schools
- Fire Stations



Adopted 10/12/10



NOTE: A comprehensive plan shall not constitute zoning regulations or establish zoning district boundaries.