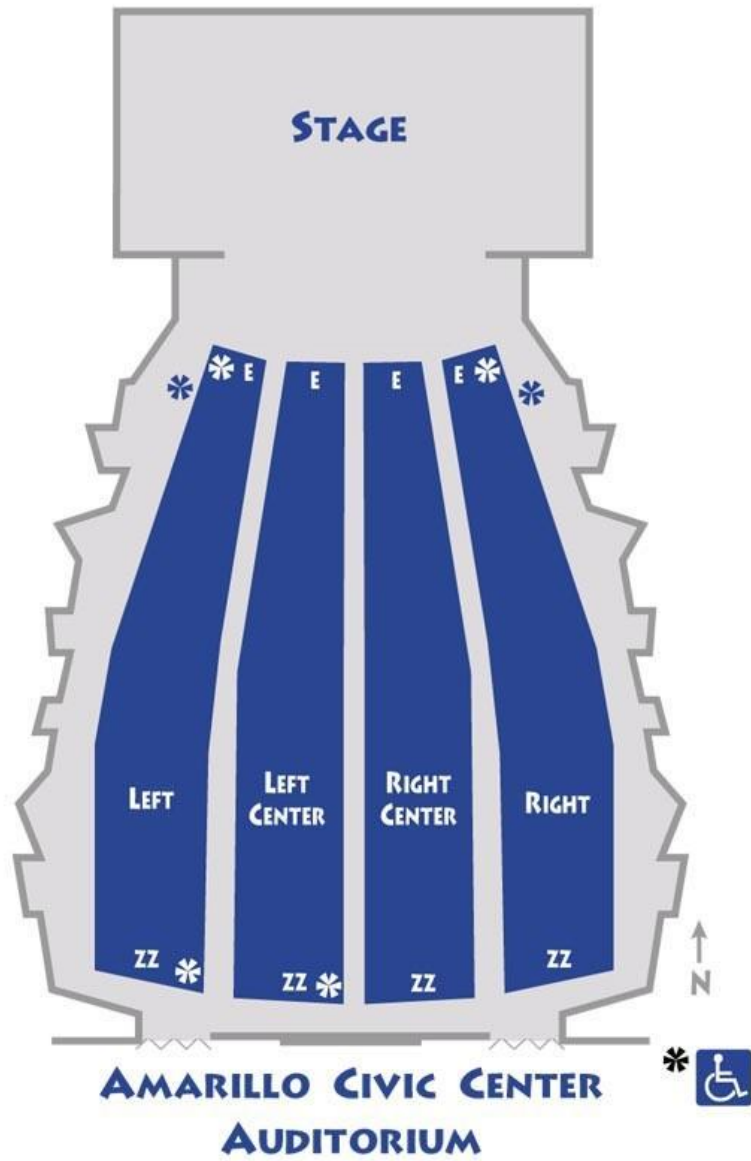
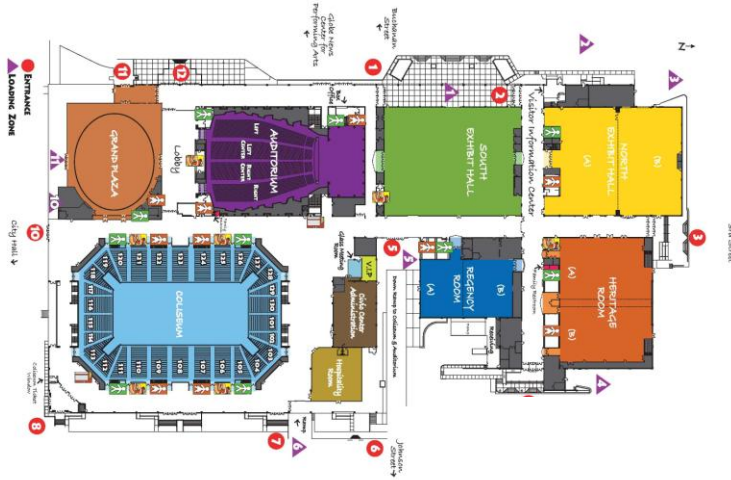
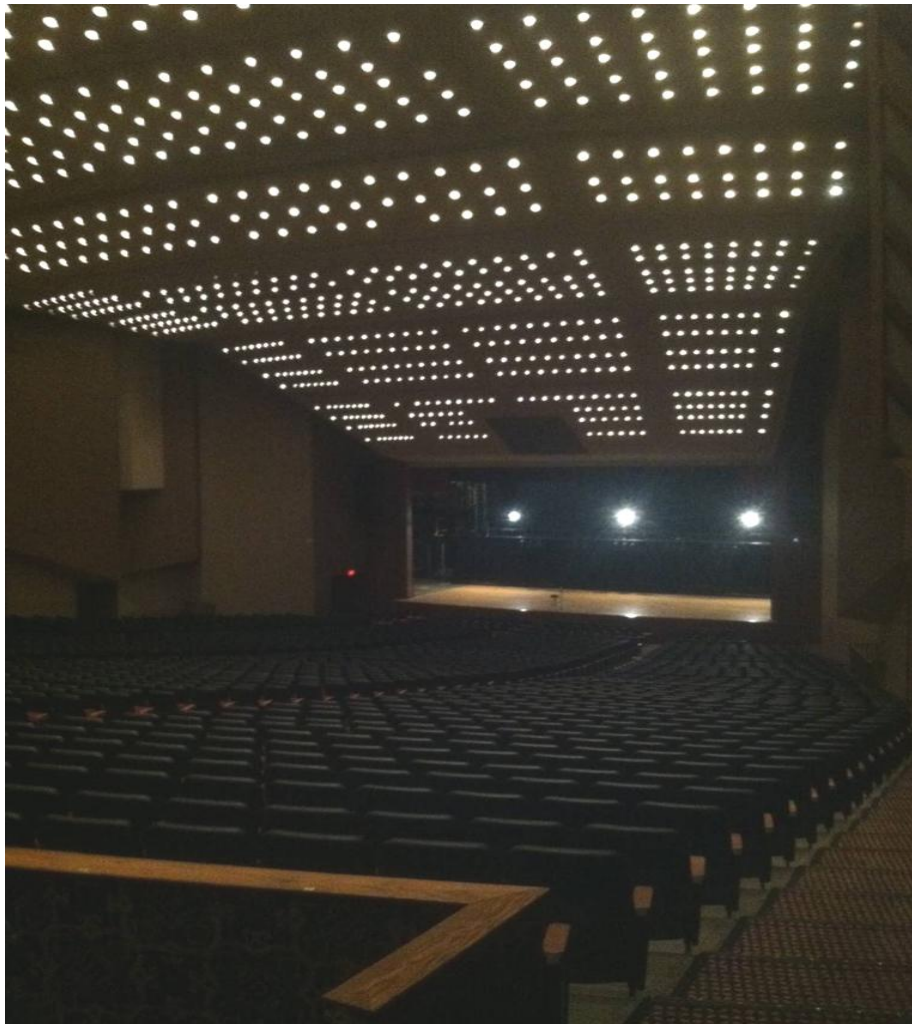




AUDITORIUM



Amarillo Civic Center Complex Auditorium
401 S. Buchanan
Amarillo, Texas 79101



The Amarillo Civic Center Complex Auditorium is a proscenium theatre with no balcony. The theatre seats 2,310 with an additional 72 seats available on the orchestra pit if the orchestra pit is not in use. The fly system features thirty-seven single purchase and five double purchase lines. There are also five motorized electrics and one manually operated Grand Drape with travel in both directions. There are seven dressing rooms of various sizes located off-stage left. Loading on to the stage is done via backing down a 30 degree down ramp through a 28'wide x 14'1" high overhead door. There is about a 20' push from the standard height loading dock to the stage floor.

The Auditorium has a VerTek 4887 line array system with a center cluster. In addition, a thirty-two-channel Soundcraft mixer board and a 300' long, 32 channel; 6 buss audio snake is available. CD players, microphones, cables, microphone stands and other audio/visual equipment are available on request. A Telex two channel headset system is in place, with jacks throughout the theatre and an HME wireless headset system that will interface with the system.

Technical Specifications

Revised 10/1/2015

Please Note the Following

1. **No hang points house side of proscenium.**
2. **FOH snake run is minimum 250' along house right wall.**
3. **5 Electrics - Motorized (see line set) fly out to only 37'**
4. **Semi tractor/trailer rigs with large cabs may have problems backing to the dock. Please allow extra time for backing on the move-in.**

STAGE MEASUREMENTS

Proscenium:	55' x 24'
Grand Drape to Back Wall	47' 02"
Grid Height	65'
Batten Length	68'
Arbor Set Capacity	800 lbs (Total Distributed on Batten on Acoustic Panel Battens, 600 lbs on all other non-motorized battens.)
Note: For any moving pipes that require more than 400 lbs. of weight please contact the Amarillo Civic Center Complex Production Management Team.	
Fly Rail:	15' high off-stage right
Loading Galleries	2
Wing Space	SL 19' 02" SR 15' 04"
Stage Height From House Floor	3' 04"
Orchestra Pit Options	3' 01 ³ / ₄ " Deep from house floor Cover to house floor Cover to Stage Height
Overhead Stage Door (USL)	10' 02" Wide X 11' 02" High
Loading Dock Height	3' 10" (Truck Height)
Apron Down Stage of Grand Drape:	4'
Cross Over:	Hallway behind upstage wall
Stage floor Construction:	Blonde Colored Wood sprung floor.

LAGGING INTO THE STAGE FLOOR IS NOT ALLOWED!!!

DRESSING ROOMS

Upper level SL: 1 Large, 2 Medium , & 4 Small (all with toilets and showers)

Lower level SL: (available only by special permission when no events are in Coliseum)

2 Large Locker Rooms / 2 Small (toilets and showers)

All dressing rooms have Live (Unrecorded) monitors that include stage video, stage audio, as well as back stage paging access (2 weeks notice for paging hook-up).

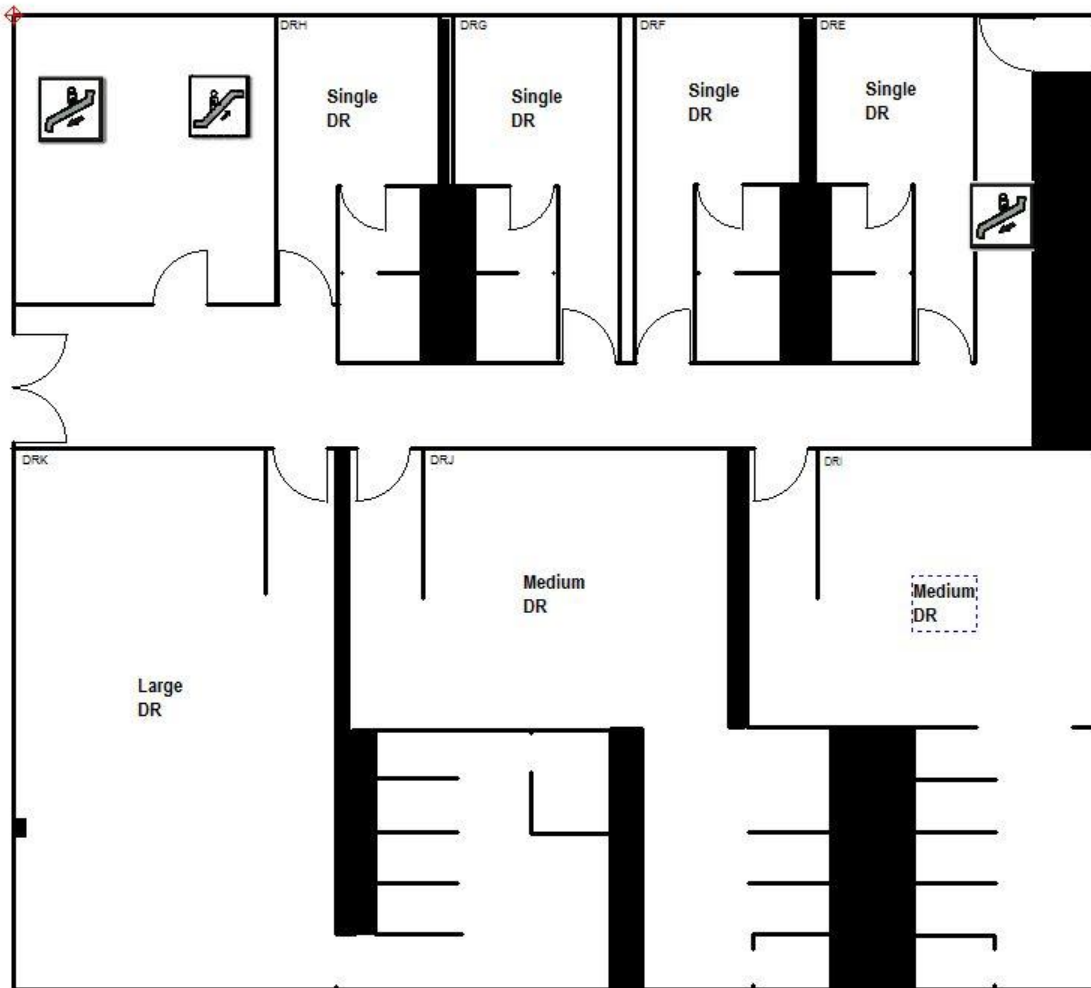


Diagram of the Auditorium Dressing Room Area

STAGE LIGHTING

See lighting plan:

Lighting Control: ETC Element w/ 60 faders capable of channel mode or submaster mode.

Lighting Positions include: Ceiling Cove (AP) (40 circuits), 2 box booms (10 circuits each), 5 Motorized Electric Battens (35 circuits each), 5 Drop Downs SL & SR (6 Circuits each) 15 Floor packets (4 circuits each), 2 Wall Boxes (4 circuits each).

Dimming Chart & House Lighting Inventory available on request.

Follow Spots:

Four 2000 W. Xenon Super Troupers. House option of no more than 4 spots in the booth.

Additional Show Power:

2 – 600 amp (3 phase)

Bare Ends or 6 – 0 Camlock

Down Stage Left

1 – 200amp (3 phase)

Cam lock(Only) – independent Ground

Down Stage Right – SOUND power

Audio: PA Array system

Vertek 4887 Line Array System

Crown Micro Tech Amps

Speaker Array:

2 top subs / 8 full range speakers per side, tuned and aimed to fill entire house area.

– Flown out of sight line in front of Proscenium.

The Drive Rack for this system is tuned and locked by JBL. NO MODIFACATION of the system and its components is allowed in any way.

Backstage Communication

Clear Com two (2) channel wired headset system in place. HME wireless headset system available and will interface with Clear Com system.

Crew Rates:

Up Riggers \$25.00 per hour 4 hour minimum

Down Riggers \$20.00 per hour 4 hour minimum

Crew Chief \$18.50 per hour

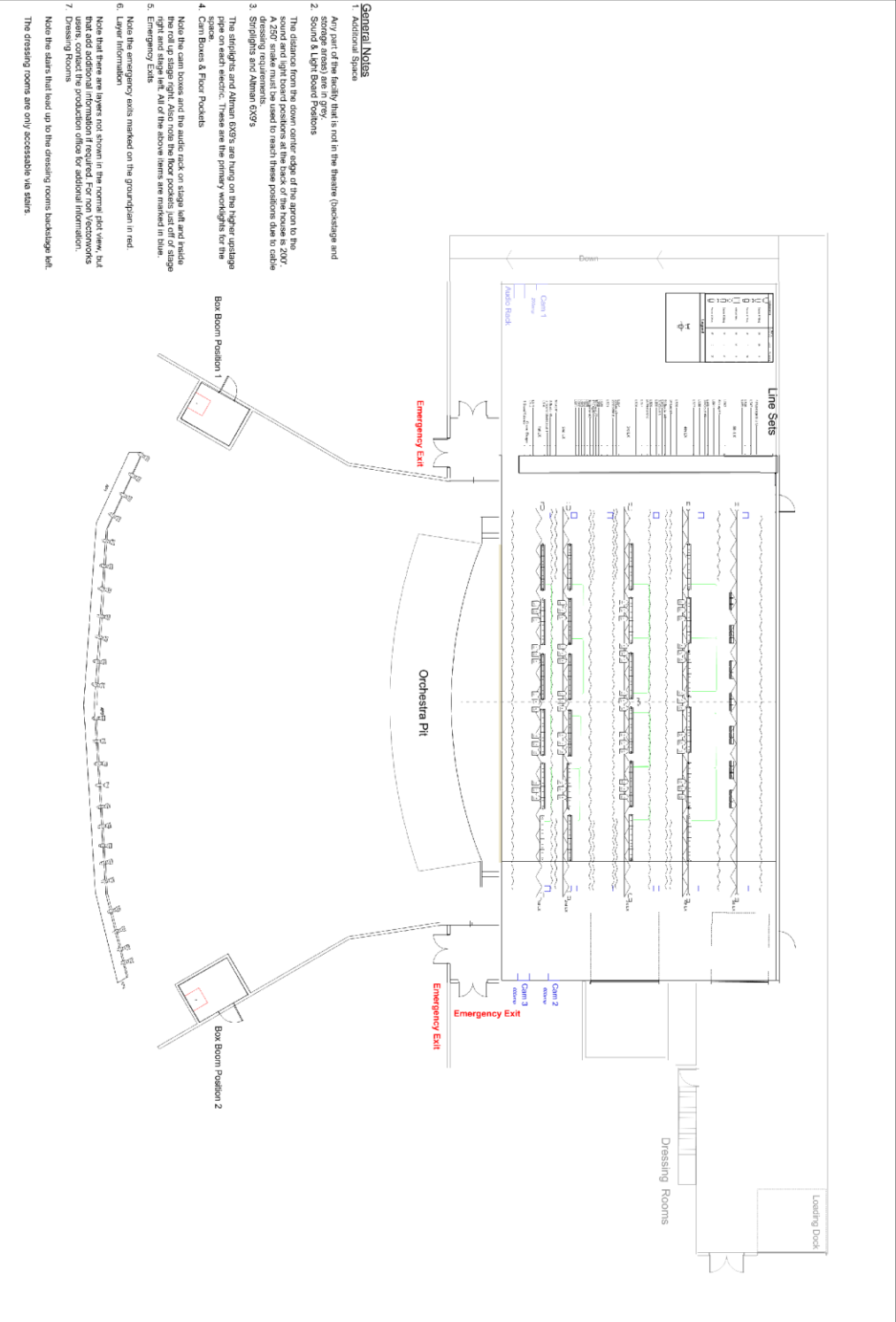
Runner Base Rate: \$150 per day plus expense. If runner is using a personal vehicle price increases to \$180 per day plus expenses.

Stagehands: \$12.50 per hour 2-hour minimum

All labor calls that extend over 8 hours in a 24 hour day will be billed out at an overtime rate of time and a half.

Stage Layout

Included in the "Attachments" section of this PDF you will find an interactive version of this diagram allowing you to focus in on details and access the "Vectorworks" features. You must have Vectorworks loaded on your device to access these extra features but it is not necessary to view the details of the standard diagram attachment.



General Notes

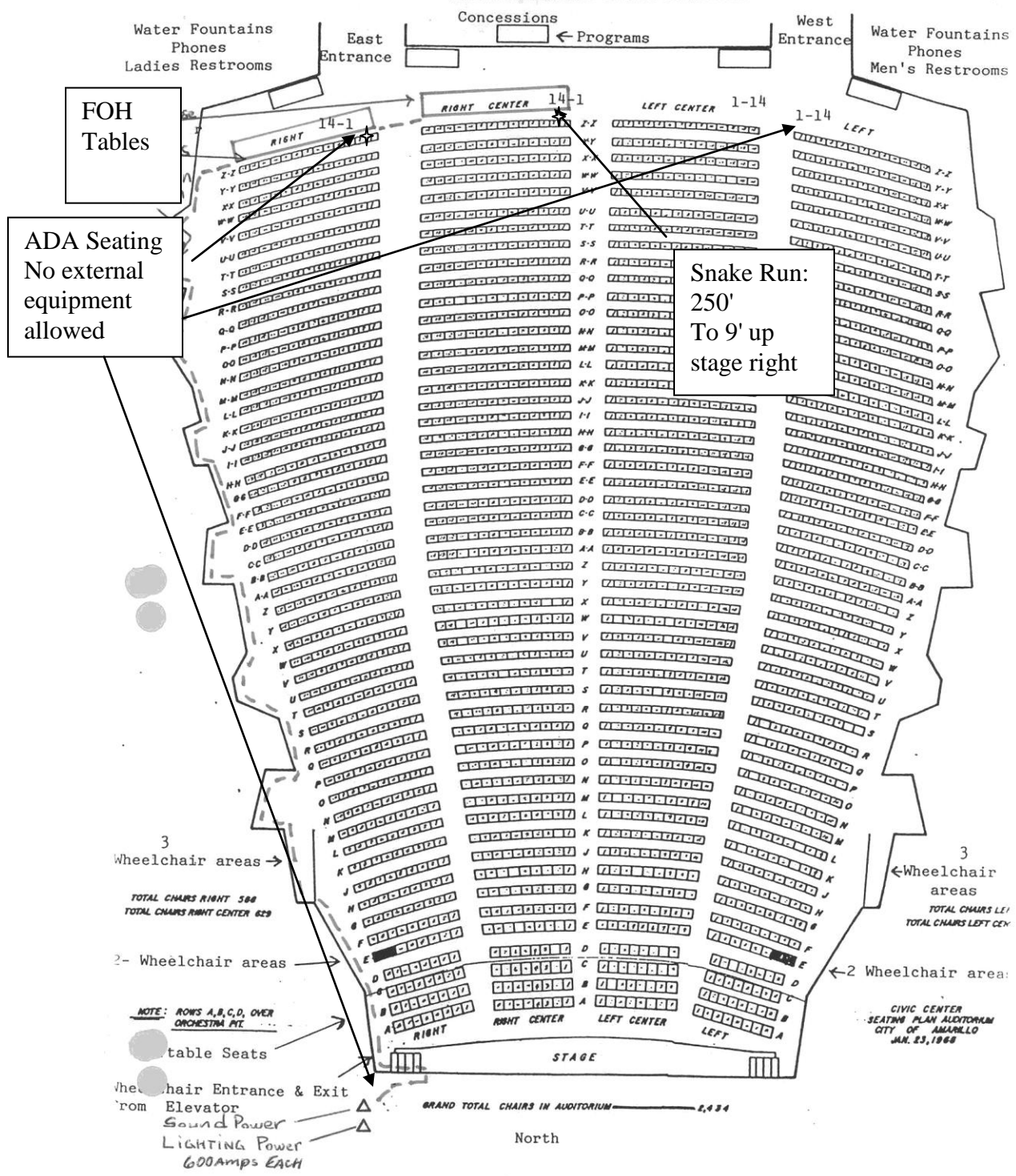
1. Additional Spaces
2. Sound & Light Board Positions
3. The distances from the stage center edge of the apron to the sound and light board positions at the back of the house is 200'. A 250' aisle must be used to reach these positions due to cable crossovers and other equipment.
4. Cam Boxes & Floor Pockets
5. Note the cam boxes and the audio rack on stage left and inside the roll-up stage right. Also note the floor pockets left off of stage right and stage left. All of the above items are marked in blue.
6. Emergency Exits
7. Note the emergency exits marked on the groundplan in red.
8. Layer Information
9. Note that there are layers not shown in the normal plot view, but that add additional information if required. For non Vectorworks users, contact the production office for additional information.
10. Dressing Rooms
11. Note the stairs that lead up to the dressing rooms backstage left. The dressing rooms are only accessible via stairs.

Line Set Schedule

Line	Dist	Wgt Blk	Capacity	House Position	Client	Approx Weight
1	-4	30		Grand Valance		
2				Grand Drape		
3	2'-0"	20	620			
4	2'-6"	20	620			
5	3'-0"			1st Electric		
	4'-0"			(Motorized)		
6	4'-6"	20	620			
7	5'-0"	20	620	Sound Shell Cloud 1		
8	5'-6"	20	620	#1 Border		
9	6'-6"	20	620	# 1 Leg		
10	8'-0"			2nd Electric		
	9'-0"			(Motorized)		
11	10'-0"	20	620			
12	10'-6"	20	620			
13	11'-0"	20	620			
14	11'-6"	20	620			
15	12'-0"	20	620			
16	12'-6"	20	620	#2 Border		
17	13'-0"	20	620	#2 Leg		
18	13'-6"	30	1300	Cloud 2		
19	14'-0"	20	620			
20	14'-6"	20	620			
21	15'-6"	20	620			
22	16'-6"	20	620	#3 Border		
23	17'-0"	20	620	#3 Leg		
24	17'-6"	20	620			
25	18'-6"			3rd Electric		
	19'-6"			(Motorized)		
26	20'-6"	30	1300			
27	21'-6"	30	1300			
28	22'-6"	30	1300	Mid B.O.C.		
29	23'-0"	20	620			

30	24'-0"	20	620			
31	24'-6"	30	1300	Cloud 3		
32	25'-0"	20	620			
33	25'-6"	20	620	#4 Border		
34	26'-6"	30	1300	#4 Leg		
35	27'-6"	20	620			
36	28'-6"			4th Electric		
	29'-6"			(Motorized)		
37	30'-6"	30	1300			
38	31'-6"	30	1300			
39	32'-6"	30	1300	Cloud 4		
40	33'-0"	20	620			
41	34'0"	20	620			
42	35'-0"	20	620	#5 Leg		
43	36'-0"	50	Dbl Purch			
44	37'-0"			5th Electric		
	38'-0"			(Motorized)		
45	39'-0"	20	Dbl Purch			
46	39'-6"	50	Dbl Purch			
47	40'-6"	50	Dbl Purch	Cyclorama Drop		
48	41'-6"	50	Dbl Purch	US B.O.C.		

House Floor Plan



118 AMARILLO CIVIC CENTER

