



Budget Presentation 9/30/2017

Presented to:
Amarillo City Council January 2, 2018

General Fund Budget

General Fund Revenue

Budget

• \$172.7 million

Actual

• \$171.7 million

Variance

• \$(936,108)

General Fund Revenue Differences

Property Tax	\$ 600,967
Sales Tax	\$(1,202,374)
Hotel Tax	\$ (455,901)
Gross Rx Business Tax	\$ 803,149
Licenses and Permits	\$ (469,164)
Charges for Services	\$ (325,434)

General Fund Expenses

Budget

• \$177.3 million

Actual

• \$174.8 million

Variance

• \$2.6 million

Net Variance

• \$1.7 million

Sales Tax Collections Ten Year History

Amarillo Sales Tax Rate

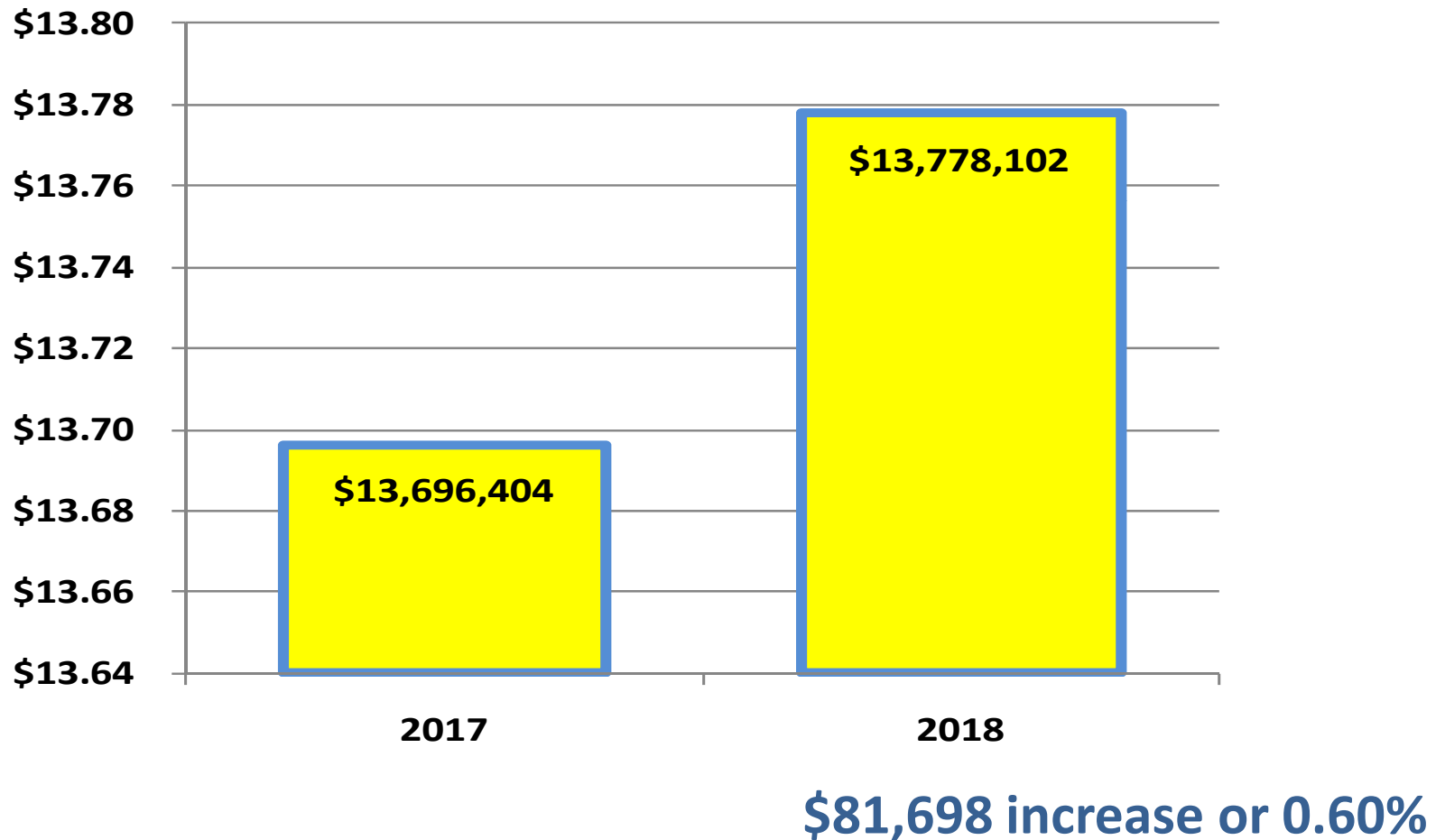
State	6.25%
City	1.50%
AEDC	0.50%
	8.25%

Sales Tax Collections

		% Change
2008	43,813,349	
2009	43,633,153	-0.41%
2010	41,980,827	-3.79%
2011	45,619,081	8.67%
2012	48,016,592	5.26%
2013	51,680,575	7.63%
2014	54,420,896	5.30%
2015	55,476,061	1.94%
2016	55,998,541	0.94%
2017	55,551,450	-0.80%



Current Year Sales Tax Collections October through December



Sales Tax: Current Year Collections

REVENUE SOURCE	2017 ACTUAL	2018 ACTUAL	INCREASE (DECREASE)
ACTUAL COLLECTIONS			
OCTOBER	4,543,603	4,536,601	(7,002)
NOVEMBER	4,894,022	5,001,798	107,776
DECEMBER	4,258,779	4,239,703	(19,076)
CURRENT COLLECTIONS	13,696,404	13,778,102	81,698
			0.60% increase

2016/2017 Budget	56,746,822
2016/2017 Actual	55,551,450
2017/2018 Budget	55,563,044

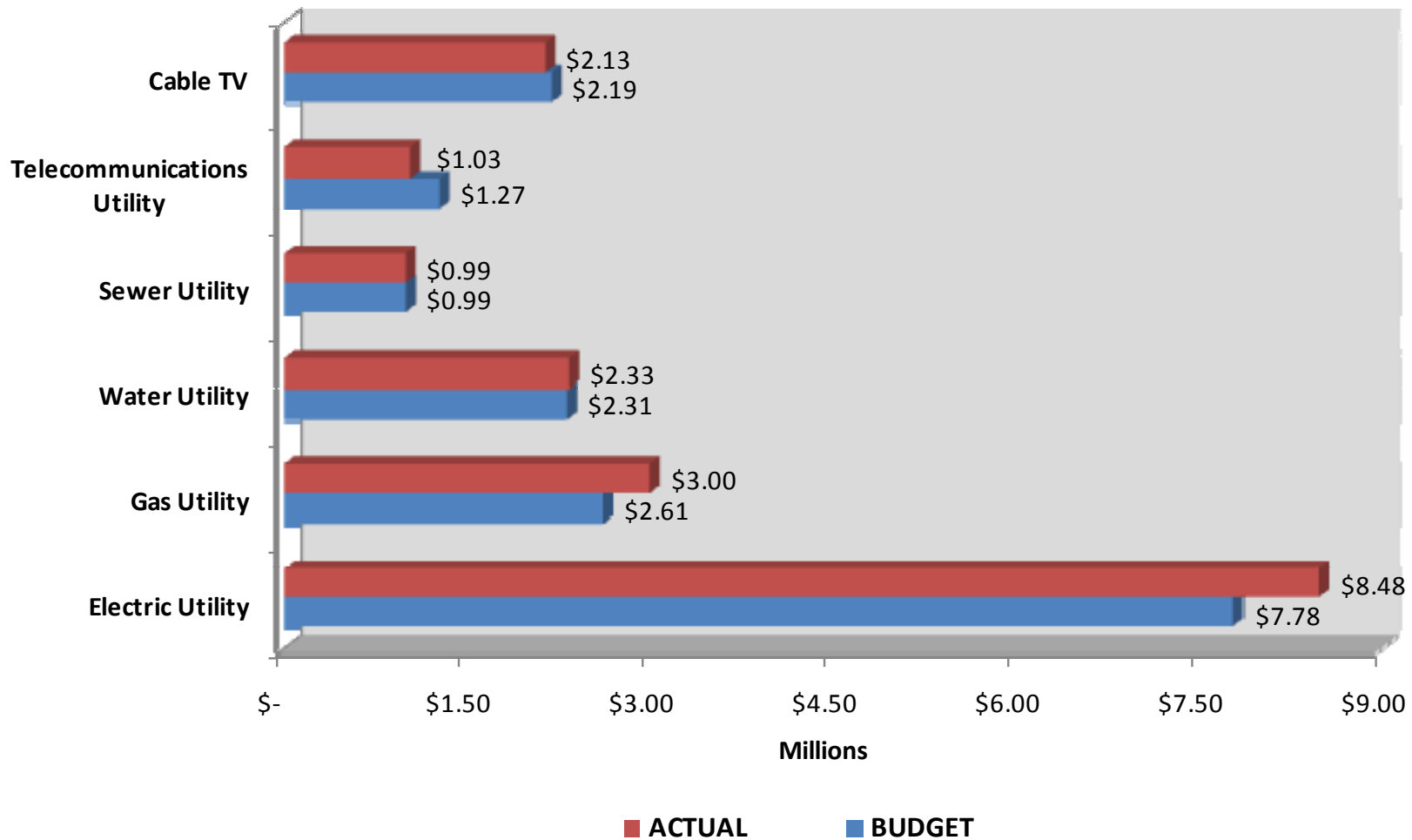


Gross Receipts Business Tax

- **Electric Utility – 5%**
- **Gas Utility – 5%**
- **Telephone Utilities – per line charge**
- **Cable TV – 5%**
- **City-owned utilities – Water and Sewer based on a per account charge**



Gross Receipts Business 2016/17 Budget versus Actual



Gross Receipts Business

	Actual 2015/16	Budget 2016/17	Actual 2016/17	Budget 2017/18
30410 Electric Utility	7,745,095	7,784,335	8,483,308	8,327,252
30420 Gas Utility	2,540,409	2,612,258	2,998,058	3,066,813

	Actual 2015/16	Budget 2016/17	Actual 2016/17	Budget 2017/18
30430 Water Utility	2,281,820	2,313,445	2,331,235	2,533,839
30435 Sewer Utility	975,834	992,598	990,446	1,081,330
30440 Telecommunications Utility	1,080,156	1,272,000	1,026,621	1,011,771
30450 Cable TV	2,155,243	2,185,000	2,133,117	2,252,678



Hotel Occupancy Tax

HOT Tax Collections

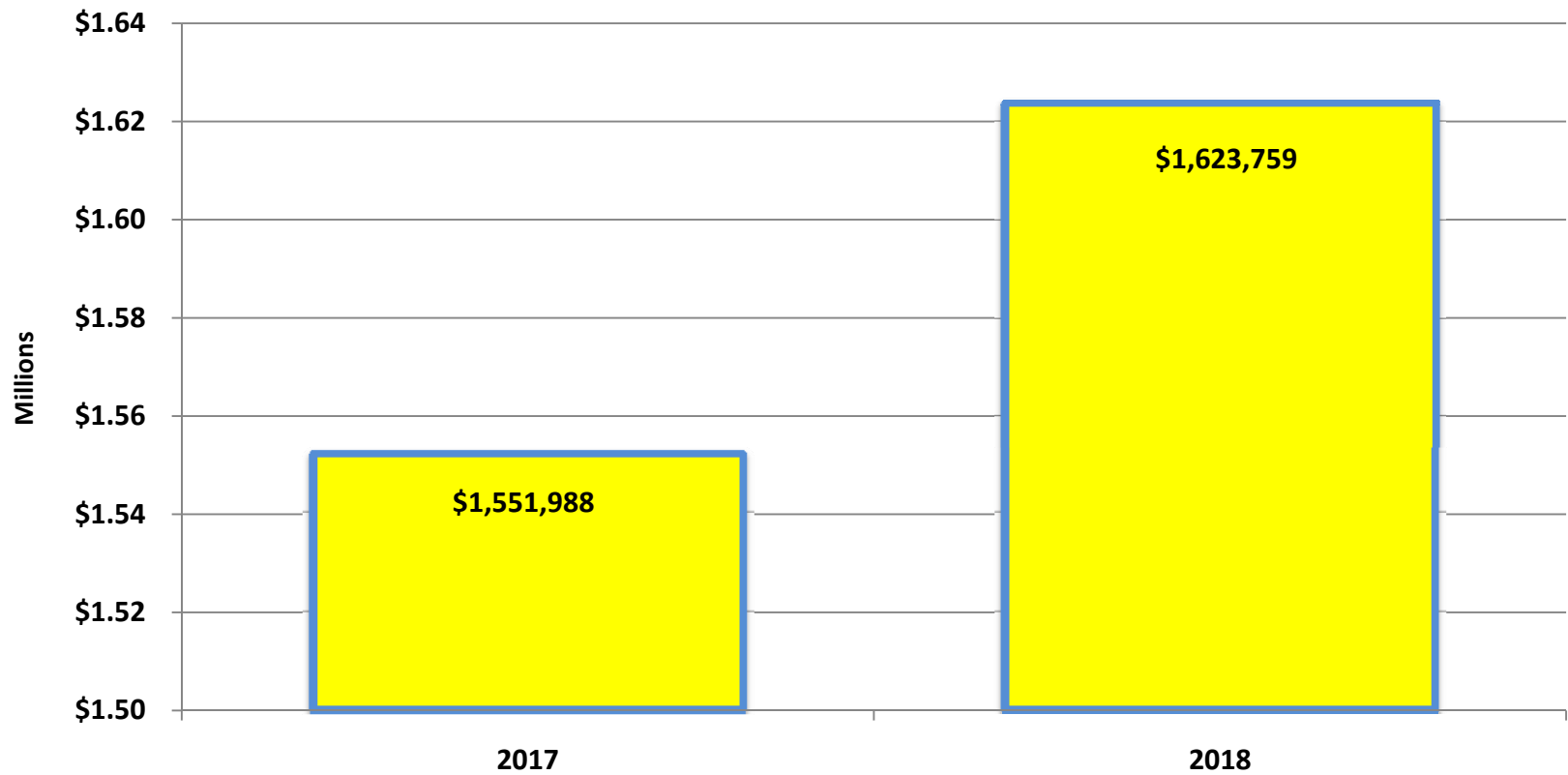
		% Change
2008	4,331,449	
2009	4,232,250	-2.29%
2010	4,399,887	3.96%
2011	4,782,868	8.70%
2012	5,002,181	4.59%
2013	5,691,119	13.77%
2014	5,937,402	4.33%
2015	6,341,559	6.81%
2016	6,777,185	6.87%
2017	6,580,376	-2.90%

HOT tax rate

State	6.00%
City	7.00%
Venue	2.00%
	15.00%



Current Year HOT Collections October through December



\$71,772 increase or 4.62%

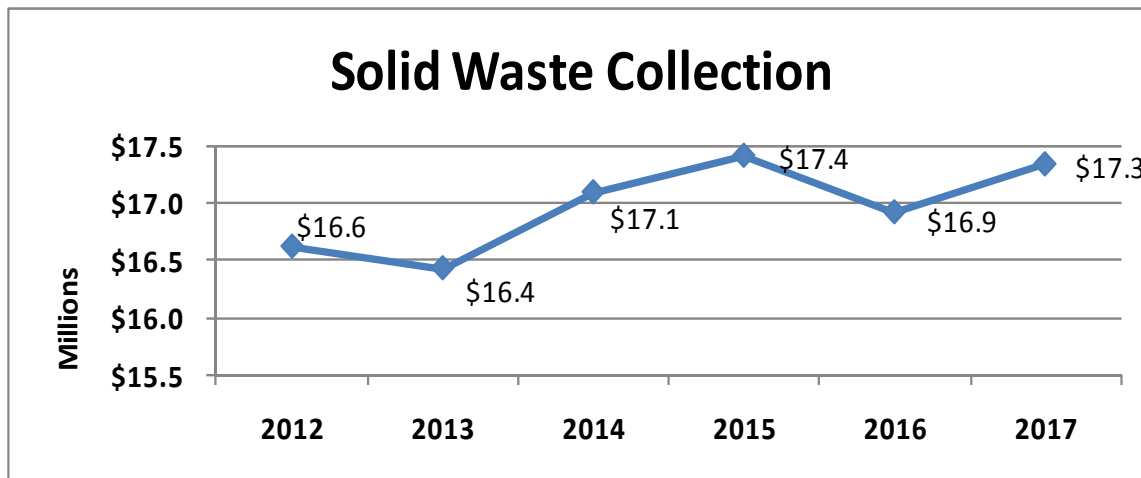
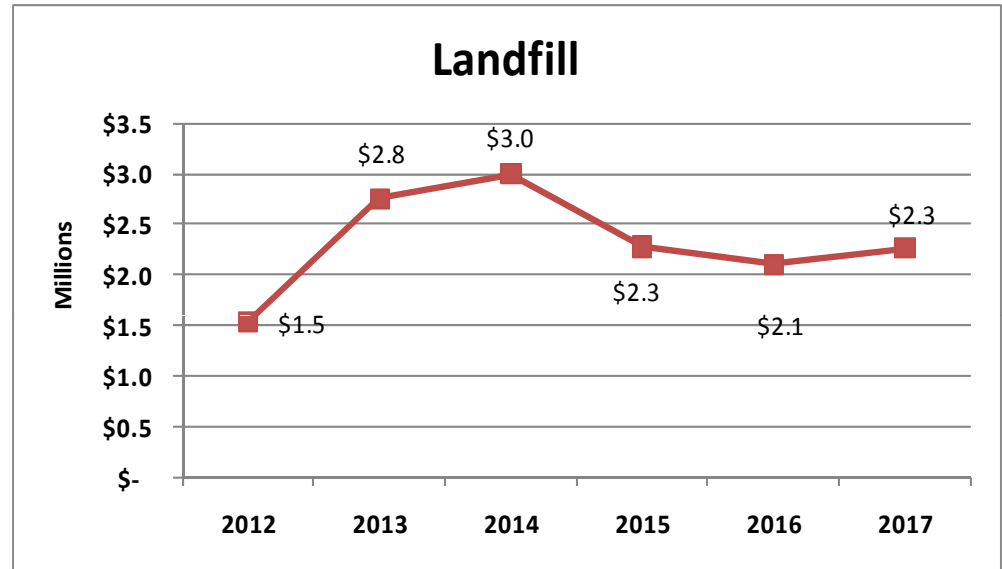
Hotel Current Year Revenue Receipts

REVENUE SOURCE	2017 ACTUAL	2018 ACTUAL	INCREASE (DECREASE)
ACTUAL COLLECTIONS			
OCTOBER	538,569	568,641	30,073
NOVEMBER	533,383	533,999	617
DECEMBER	480,036	521,119	41,083
CURRENT COLLECTIONS	1,551,988	1,623,759	71,772
			4.62% increase

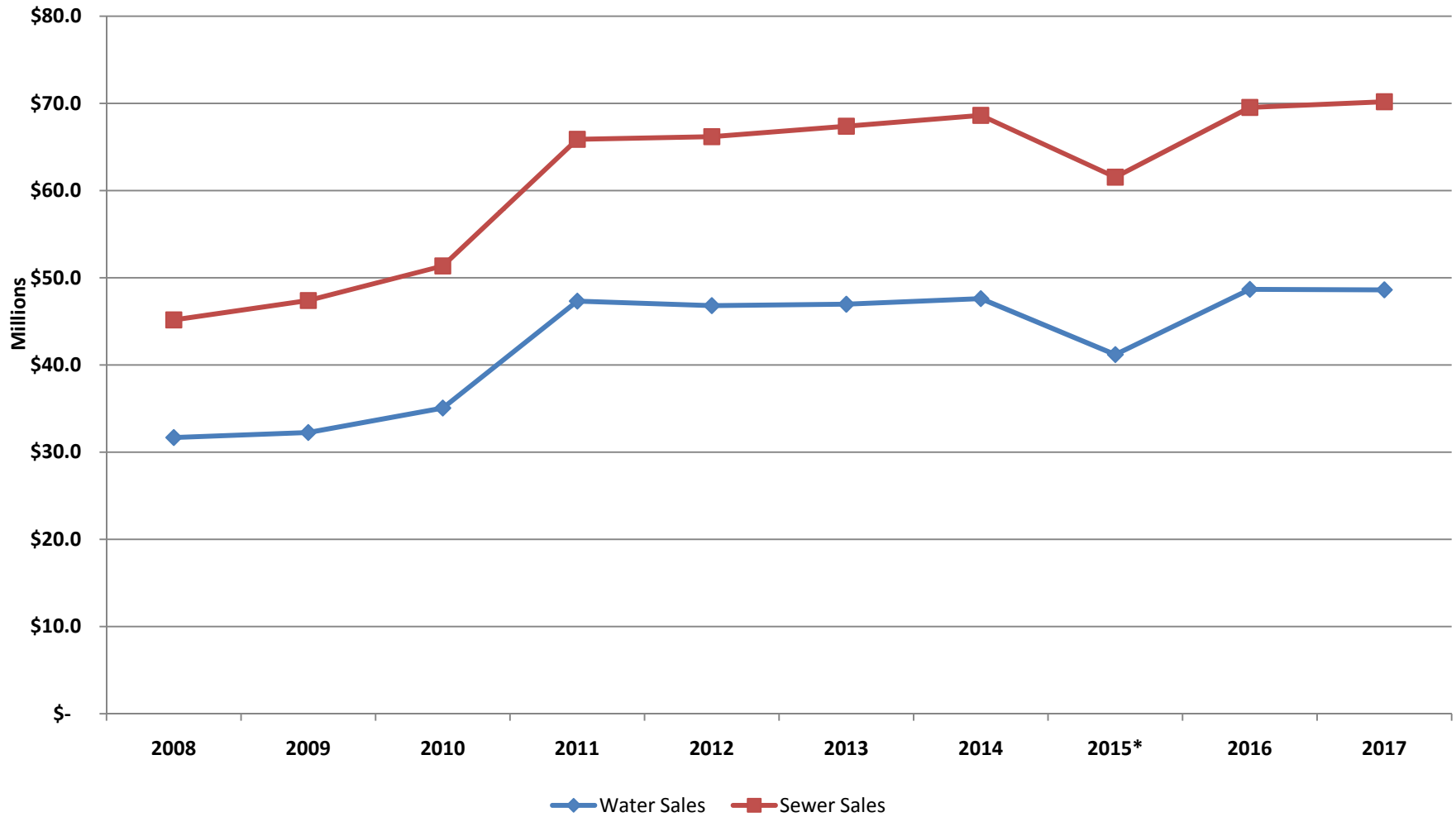


Sanitation Sales

	Collection	Landfill
2012	16,616,253	1,541,988
2013	16,428,492	2,754,840
2014	17,088,981	2,997,937
2015	17,405,937	2,278,380
2016	16,915,730	2,104,694
2017	17,331,921	2,268,780



Water and Sewer Sales



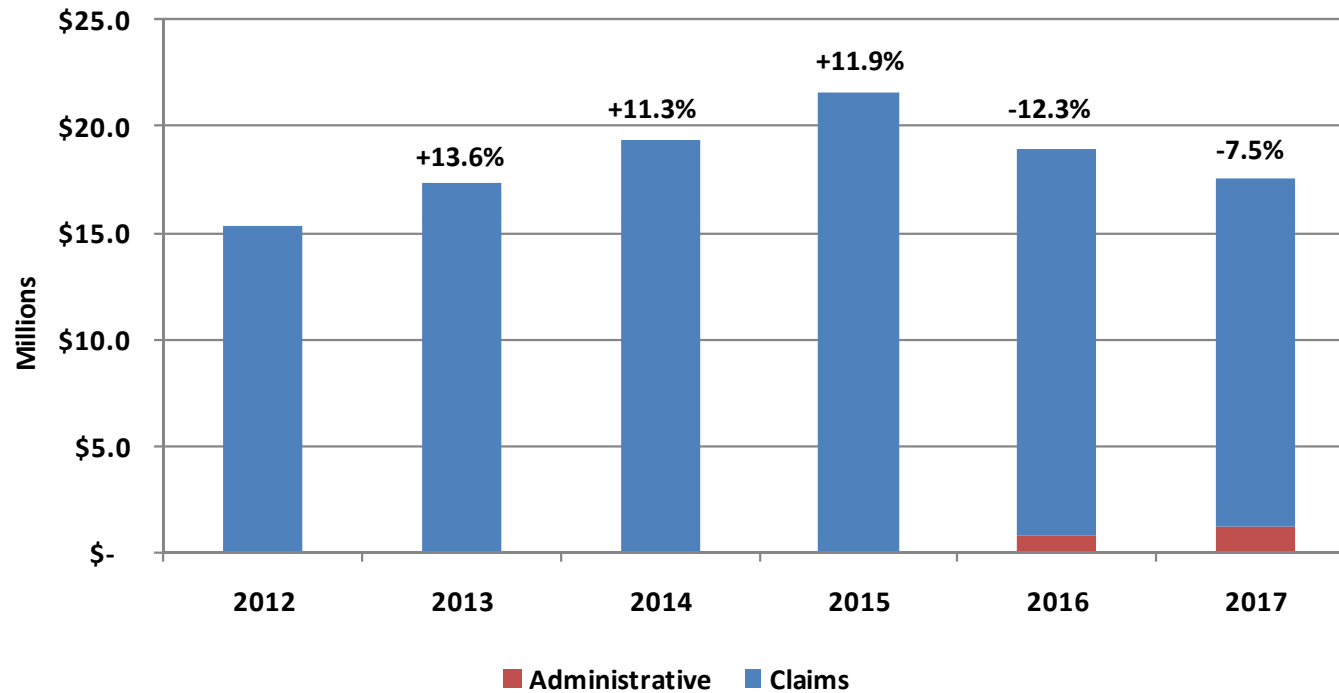
* 4th wettest year on record

Water and Sewer Sales

	Water Sales	Sewer Sales
2008	31,678,129	13,493,693
2009	32,260,187	15,132,268
2010	35,062,958	16,295,031
2011	47,322,272	18,555,334
2012	46,807,157	19,377,899
2013	46,968,390	20,419,533
2014	47,606,516	21,024,451
2015*	41,199,939	20,340,925
2016	48,676,840	20,860,554
2017	48,620,594	21,570,449

***4th wettest year on record**

Health Insurance Fund - Claims



2012	2013	2014	2015	2016	2017
15,294,821	17,376,004	19,337,744	21,636,561	18,969,339	17,545,431

Questions?